

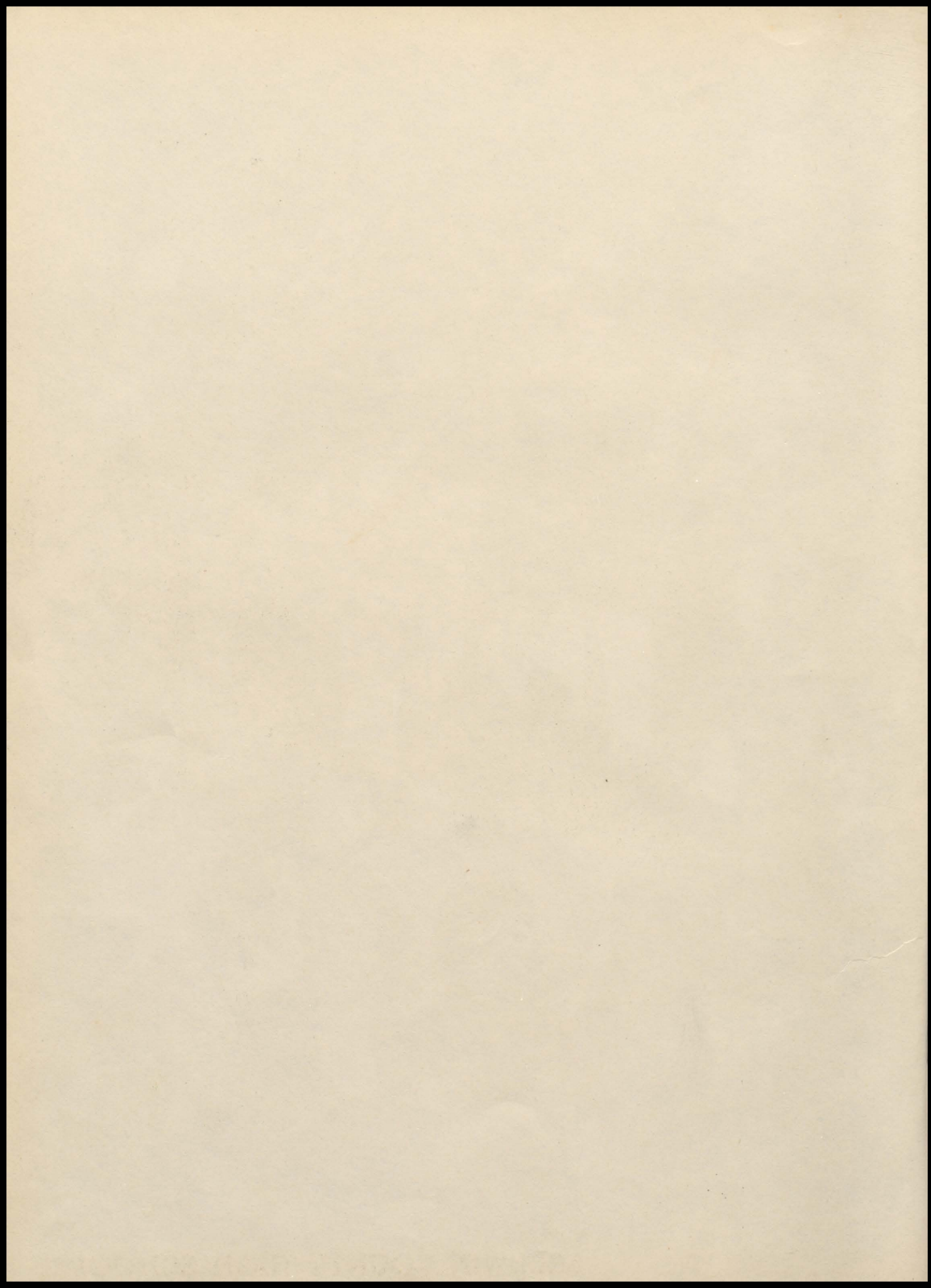
1955

BALCOALA





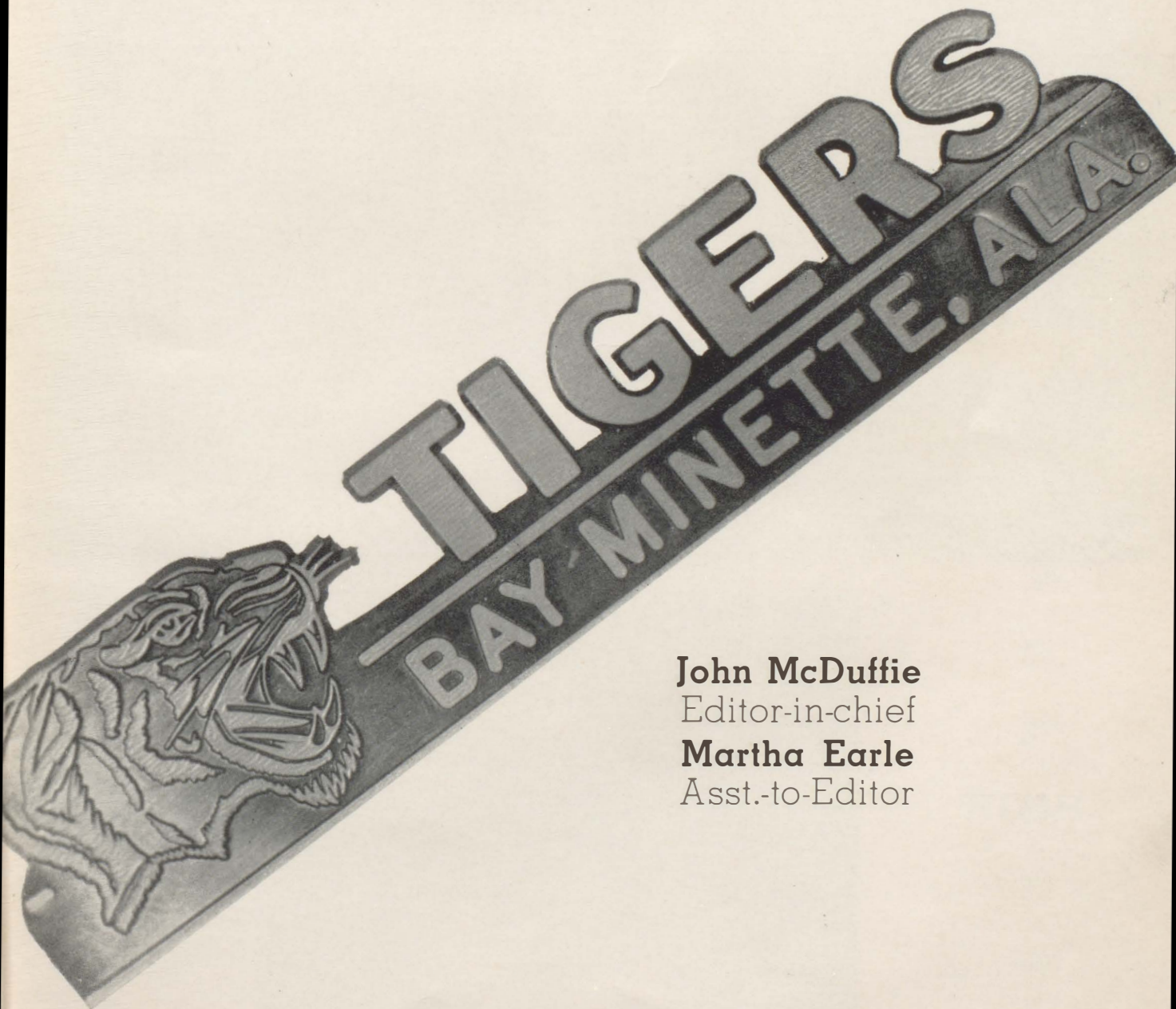




"Better Late

Than Never"

Y'all's "55" Balcoala



John McDuffie

Editor-in-chief

Martha Earle

Asst.-to-Editor

PUBLISHED BY BETA CLUB OF
BALDWIN COUNTY HIGH SCHOOL

BALDWIN



COUNTY



HIGH



SCHOOL



INDEX

DEDICATION	4
FACULTY	5
STUDENTS	15
ACTIVITIES	37
FEATURES	64
ATHLETICS	73
ADS	97

Dedication



On behalf of the staff and the student body of Baldwin County High School, we proudly dedicate the 1955 Balcoala to one of our most beloved teachers, Miss Gladys Nichols.

All of us studied English under her at one time or another during our high school career. We appreciate the interesting and thorough English course Miss Nichols so aptly taught us and we feel that as some of us enter college and other walks of life we will appreciate the knowledge of this important subject even more. Miss Nichols has had to endure this 1955 class

in many of the activities this year. Always we have found her interested and willing to help.

She worked hard as Beta Club Sponsor. Great was her patience as she helped to produce the Beta Play with a cast of "Dignified" Betas who, at times, were not so dignified.

Never to be forgotten is the individual help and student guidance given by Miss Nichols to any seeking it.

As Miss Nichols leaves B.C.H.S. we feel that our loss is another school's gain.

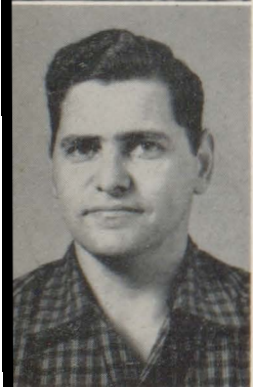


FACULTY



FACULTY

FACULTY



Top Left, Counter Clockwise

MR. FORD ALFORD, Band—B.A. Southeastern Louisiana Institute

MISS DORIS BEECH, Commercial—B.S., Livingston State College

MRS. AMELIA BENNETT, English, Social Studies—University of Alabama

MRS. CLARA BOLON, Science, Physical Education—B.S., Alabama College

WILEY BOWERS, History—B.S., Jacksonville State Teachers College; M.A., University of Alabama

MRS. THELMA BUSBEE, Social Studies—A.B., Huntingdon College

C. F. ECHOLS, Science, Democracy—B.S., Howard College, M.A., University of Alabama

MRS. DORIS HODGSON, Home Economics—B.S., A.P.I.

ADOLPHUS JONES, Diversified Occupations—B.S., A.P.I.

MISS LILLIAN LEONARD, Science—B.S., Brownville College; M.A., University of Alabama

MISS MARJORIE MATTHEWS, Mathematics—University of Chicago, Daphne Normal School

MRS. LOUISE McDUFFIE, English—B.S., Troy State Teachers College

C. V. DANIELS, Principal—B.S., Livingston State Teacher College, M. A., University of Alabama





Top Left, Counter Clockwise

PAUL McKINNEY, English—M.A., Emory University

B. H. NALL, Vocational Agriculture—M.A., A.P.I.

MRS. WILFORD NEALY, Secretary to the Principal

WILFORD NEALY, Commercial—B.S., Livingston State Teachers College

MISS GLADYS NICHOLS, English—B.S., M.A., University of Alabama

MRS. JULIA NOONAN, Mathematics—A.B., Alabama College

MRS. ANNE B. OWENS, Mathematics—B.S., University of Georgia

MISS GWENN RILEY, Glee Club—B.A., Mississippi Southern

MISS DOTTIE SUE RUSHING, Physical Education—B.S.
Livingston State Teachers College

MRS. ELLA MAE SMITH, English—A.B., Huntingdon

MRS. MARY A. STOUGH, Librarian—A.B., Alabama College

MISS RUTH WEST, English, French—A.B., Huntingdon,
National University of Mexico, M.A., University of Texas

MRS. INEZ ZEHNER, Science—Alabama College

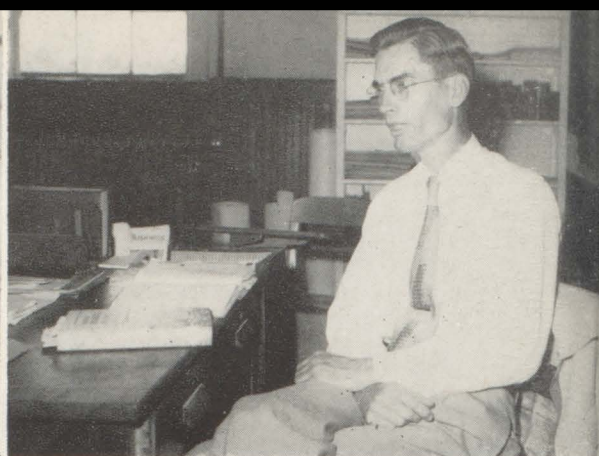
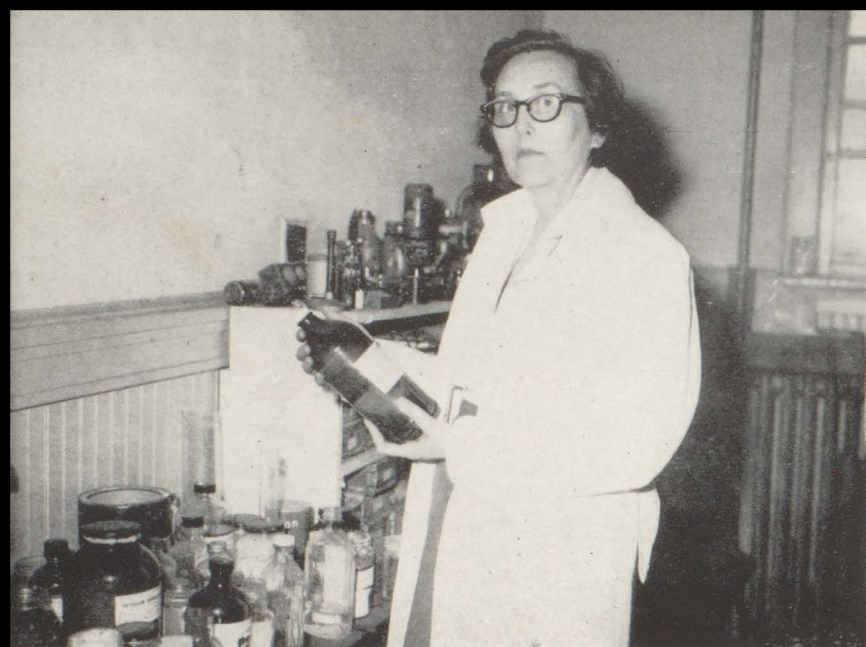
WALLACE R. WILLIAMS, Assistant Principal—B.S.,
Livingston State Teachers College

Not shown: COACH ED BAKER,

MRS. BESSIE MILAM

MISS PHYLLIS TATE





SCIENCE

Baldwin County High School offers a well-rounded course of Sciences. This begins with Jr. Science under Mrs. Bolon and Mrs. Zehner. These classes are general courses in everyday Science.

Beginning with the Sr. I year, there are

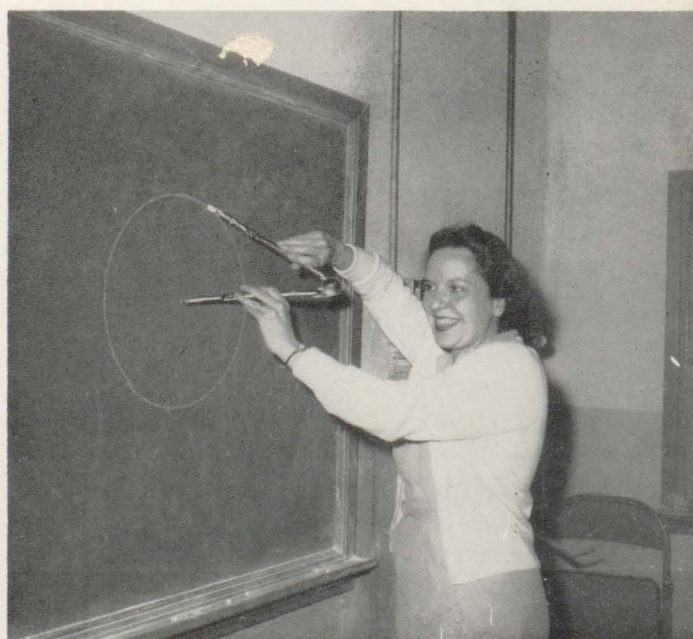
several elective science courses offered. These subjects are biology, physics, chemistry and mechanical drawing, taught by Miss Leonard, and Sr. Science taught by Mr. Echols.

If one will take these elective courses he will find his curriculum much more complete.

SENIOR MATH

Courses offered in Sr. Math are Algebra I, taught by Miss Matthews, Algebra II and plane geometry, taught by Mrs. Noonan.

These courses are not too difficult considering the good that they do a person in the future. A student should not plan to attend college without having had all three.





ECONOMICS

Economics, a required senior subject is taught by Mr. Echols. This course is a combination of democracy and economics; Democracy gives the student an understanding of patriotism, makes him have a strong sense of loyalty. Economics is a course in economical problems in the modern world.

SENIOR HISTORY

Sr. History is well covered by three competent instructors, Mr. Bowers, Mr. Echols, and Mrs. Bennett. Mrs. Bennett teaches the Sophomores world history, and Mrs. Bowers teaches American History. Mr. Echols teaches a course which is a combination of democracy and economics. This is one of the required subjects. This course teaches us what is required of us, as citizens, by teaching history, laws, and the problems which face us as we leave school and take our places in life.



SENIOR ENGLISH

Thinking in the terms of preparatory courses, English is perhaps one of the most important. Certainly no one would be prepared for college or life without the capable instruction of our English teachers. They are Mrs. Amelia Bennett, Mrs. Ella Smith, Miss Ruth West, and Miss Gladys Nichols.





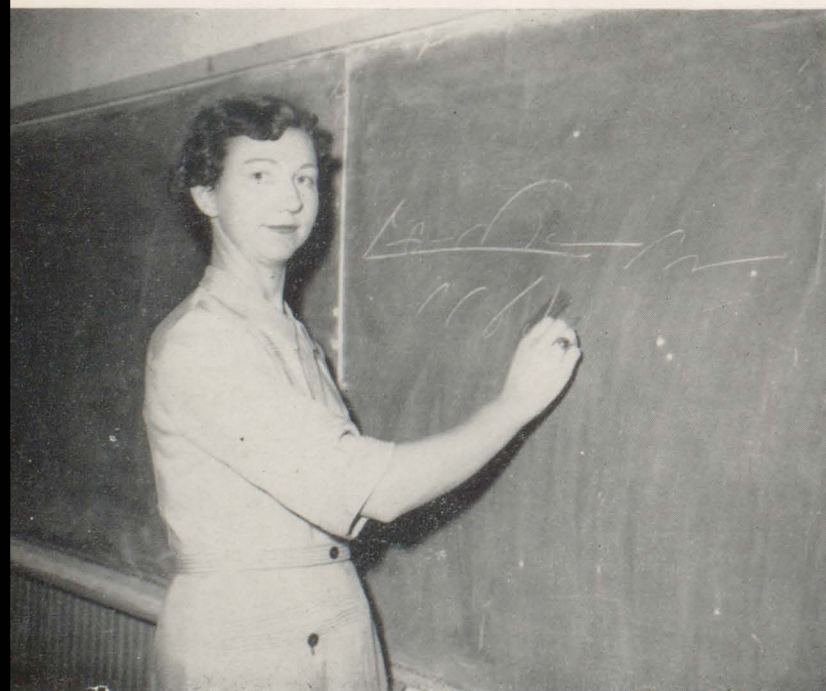
COMMERCIAL

Commercial subjects at B.C.H.S. come into almost every students schedule. Every student wants to learn the principal of the typewriter and the technique of shorthand. Mr. Neely and Miss Beech did a great job of teaching typing,

and Miss Beech had all shorthand courses. Bookkeeping, taught by Mr. Neely, is another important course in commercial work at B.C. H.S.

D. O.

The D. O. Program is a course of study designed for students who don't plan to attend college. Provided in this course is a chance for classroom instruction in the morning and practical work in a chosen field during the afternoon. The experience gained in this way is also very helpful to a student planning on going to college.



HOME ECONOMICS

Home economics, taught by Mrs. Bob Hodgson, is a course in the fundamentals of cooking, sewing, child care, or in other words, a general course in becoming the "Housekeeper of Tomorrow." This class is open to girls in Senior High.

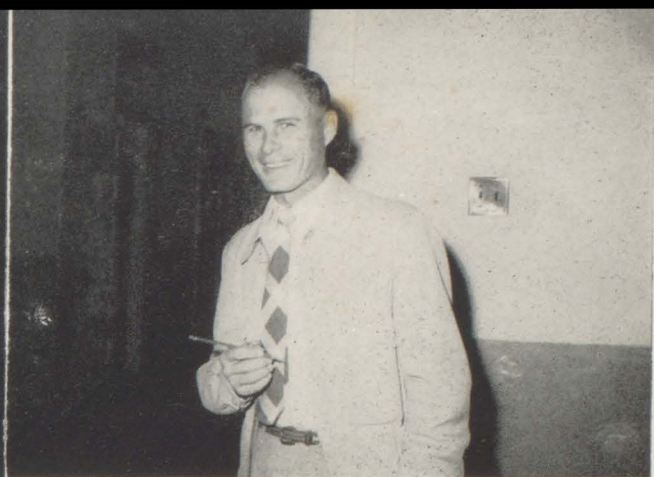
Vocational agriculture is for the boys in senior high. It is taught by Mr. Nall who passes on to his students the arts of insect control, livestock growing, crop growing and many other fundamentals of farming.





JUNIOR SCIENCE

Everyone at sometime in his life needs to have some knowledge of common every day science. Each Junior High student is required to take science. These Junior High courses help prepare a student for the advanced Senior sciences. Mrs. Bolon and Mrs. Zehner direct the Junior Science Department.



JUNIOR MATH

Junior math is taught by Mrs. Milam, Mrs. Owens, Mrs. Noonan and Miss Matthews. These teachers realize the importance of this subject and try to prepare the students who wish to progress in math with a sound, basic understanding.

JUNIOR SOCIAL STUDIES

The social studies teachers are Mr. McDuffie, Miss Rushing and Mr. McKinney. Mrs. Busbee, teaches the required Civics. Social Studies, a combination of geography and history, is es-

sential in order to understand our country and others. Civics is a study of our country, its laws, and prominent leaders who have helped to make our country what it is today.



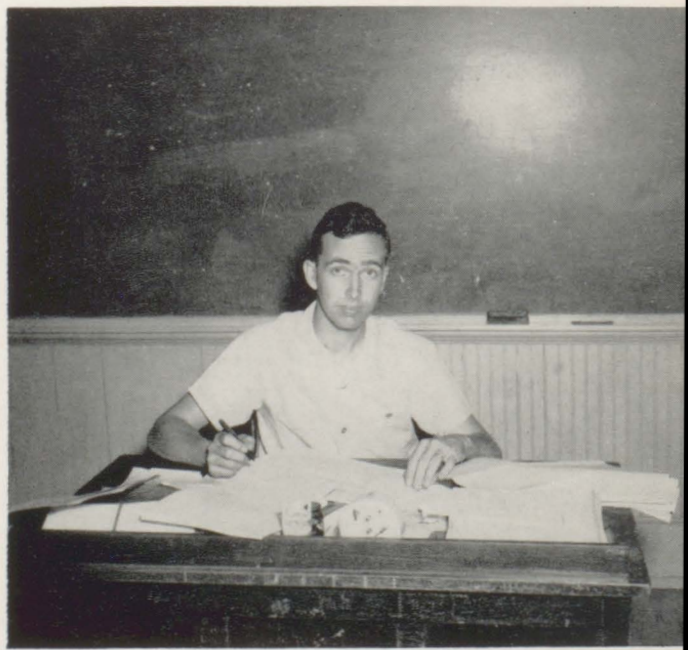


PIANO

Piano, taught by Miss Tate, was one of the musical classes at B.C.H.S. A good bit of preliminary piano study and a knowledge of music can be acquired from this course. There is much practice, but it is not all work and no play.

JR. PHYSICAL EDUCATION

Physical Education is an important class in junior high since it gives students a knowledge of sports and an all-important sense of fair play and sportsmanship. Miss Dottie Sue Rushing and Coach Ed Baker were the Physical Education instructors.





JUNIOR ENGLISH

Since English is a required subject all through high school, junior English is very important. It is in the junior classes that we receive the fundamentals of English that are to carry us all through high school and life. A thorough understanding of English is necessary today in society and business. The Junior High English instructors are Mrs. Smith, Mrs. McDuffie and Mr. McKinney.



FOREIGN LANGUAGE

Spanish and French are the two foreign language courses taught at Baldwin County High School. These courses consist of first and second year classes of each. Miss Ruth West teaches all four of these classes.

GLEE CLUB

B.C.H.S. again offered Glee Club, which was taught by Miss Gwen Riley. This is a good course for the fundamentals of chorus work as a whole. In addition to this, much fun and enjoyment is received from it.

LIBRARY

B.C.H.S. is very lucky to have such a fine and well equipped library, and to have such a fine librarian as Mrs. Stough. She is always ready to help students find the plentiful information provided by the books in the library.





BAND

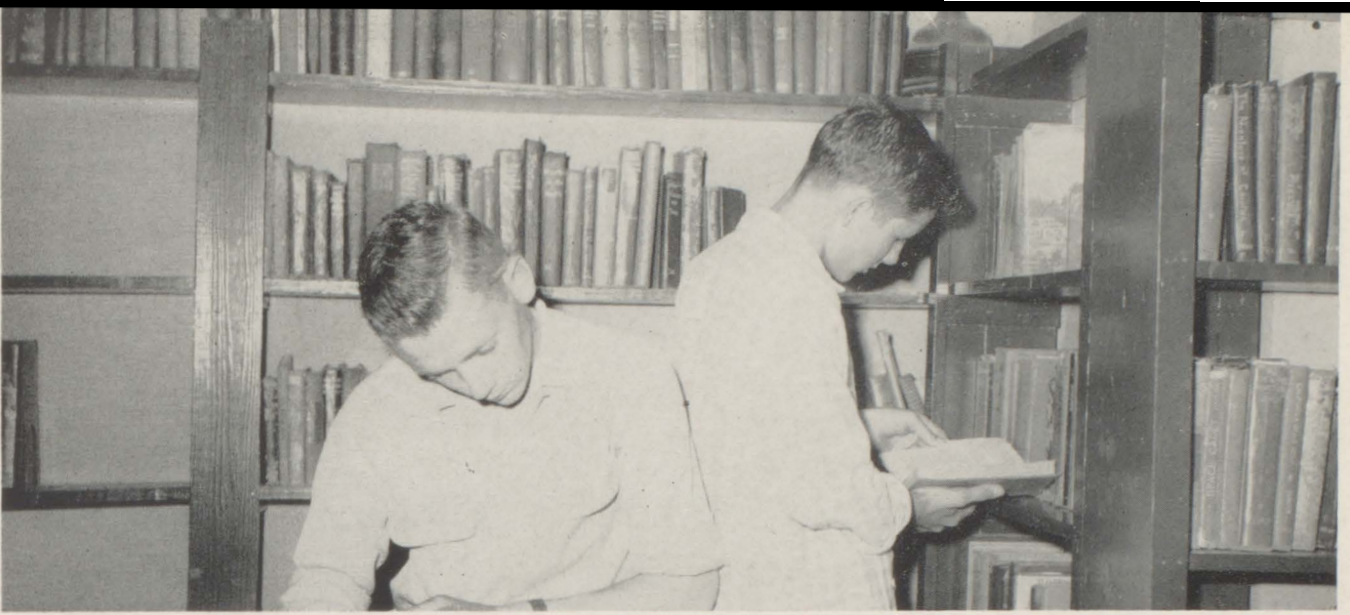
The Baldwin County High School "Tiger Band", under the direction of Band Master Ford Alford, learned a great deal this year. The band

was a hard working marching unit and a hard practicing concert band. There is fun and knowledge to be gained from playing in any band.

OFFICE

Mrs. Nealy, the ever popular and friendly secretary of B.C.H.S., was the lady who had to listen to students' trials and tribulations in addition to her ever demanding task of keeping our school going. Teachers, students, and parents owe her a lot of thanks.

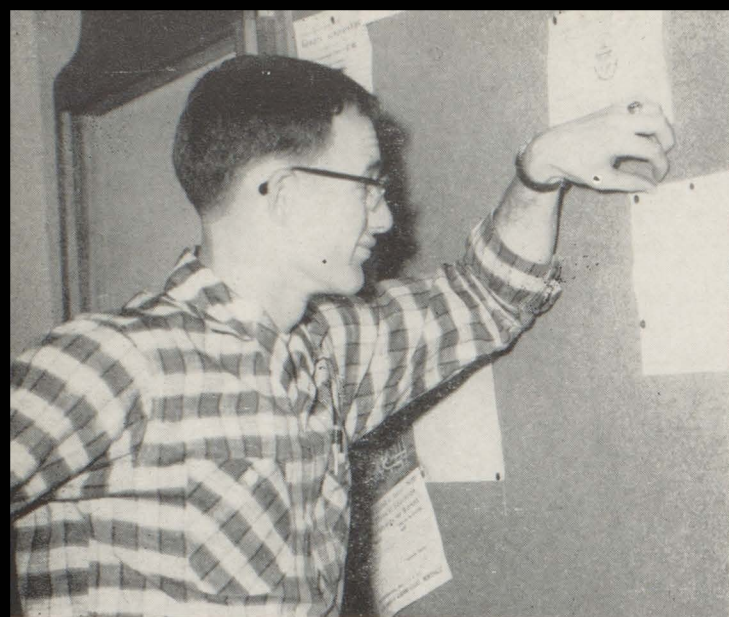




STUDENTS



STUDENTS
STUDENTS



Can't you read it Don?

SENIORS

MARVIN BOONE—"B" Club (53-54, 54-55) F. F. A. (52-53) Football (52-53, 53-54, 54-55) Vice President Junior Class (53-54).

LUVENE BOYINGTON

BILLY BRYARS—F. F. A. (52-53, 53-54, 54-55) Sentinel (54-55).

NEIL BUSH—Science Club (52-53, 53-54, 54-55) "B" Club (53-54, 54-55) Student Council (54-55) Football (52-53, 53-54, 54-55) Baseball (53-54, 54-55) Basketball (52-53, 53-54, 54-55).

CLYDE BYRNE — Key Club (54-55) Science Club (52-53, 53-54, 54-55) Camera Club (52-53, 53-54, 54-55) Glee Club (52-53) Cheerleader (54-55) Band (52-53, 53-54, 54-55).

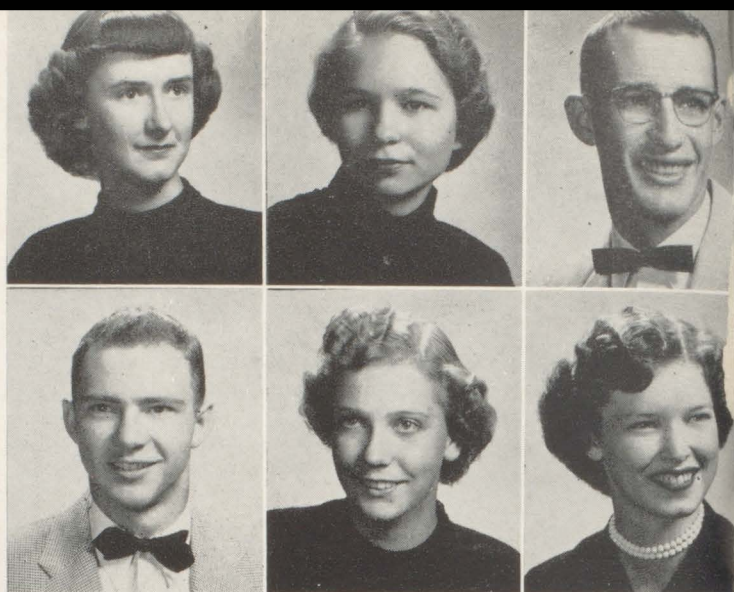
ANN CHAMBLESS—Beta Club (53-54, 54-55) Library Club (51-52) Glee Club (52-53, 53-54).

ROBBIE FRY COOK—F. T. A. (54-55) F. H. A. (52-53, 53-54, 54-55).

BARBARA COX—Library Club (52-53) Glee Club (52-53) F. H. A. (53-54).

DAVID DAW

WAYNE DEAN—F. F. A. (52-53, 53-54)



YVONNE ALLEN—F. H. A. (54-55).

JOYCE BALLARD—Beta Club ('53-54, '54-55) Glee Club (53-54) F. H. A. (53-54, 54-55) Reporter (54-55) Spanish Club (54-55) Songleader (54-55) Vice President Senior Class (54-55).

DONALD BOAN—Key Club (52-53, 53-54, 54-55) Science Club (54-55) "B" Club (52-53, 53-54, 54-55) F. F. A. (52-53, 53-54, 54-55) Football (52-53, 53-54, 54-55) Baseball (53-54, 54-55) Basketball (52-53, 53-54, 54-55) Corn growing champ (54) Senior Class Executive Committee.

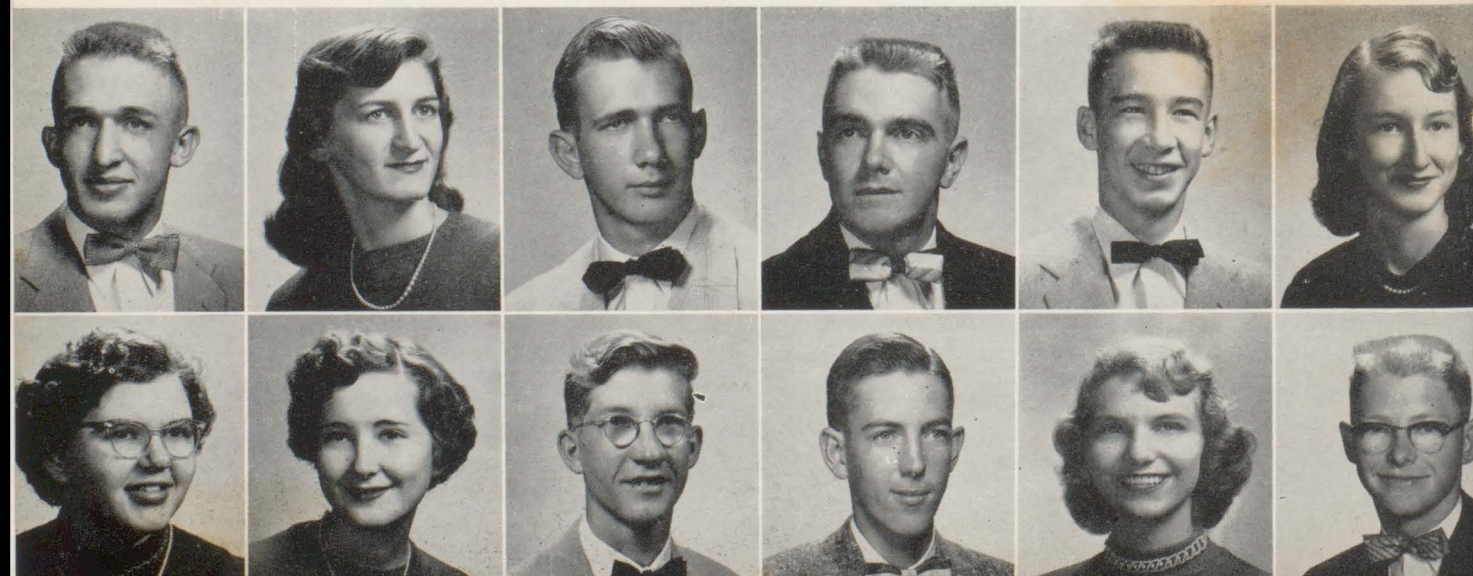
GEORGE BOAN—Glee Club (52-53, 53-54) "B" Club (53-54, 54-55) Basketball (52-53, 53-54, 54-55).

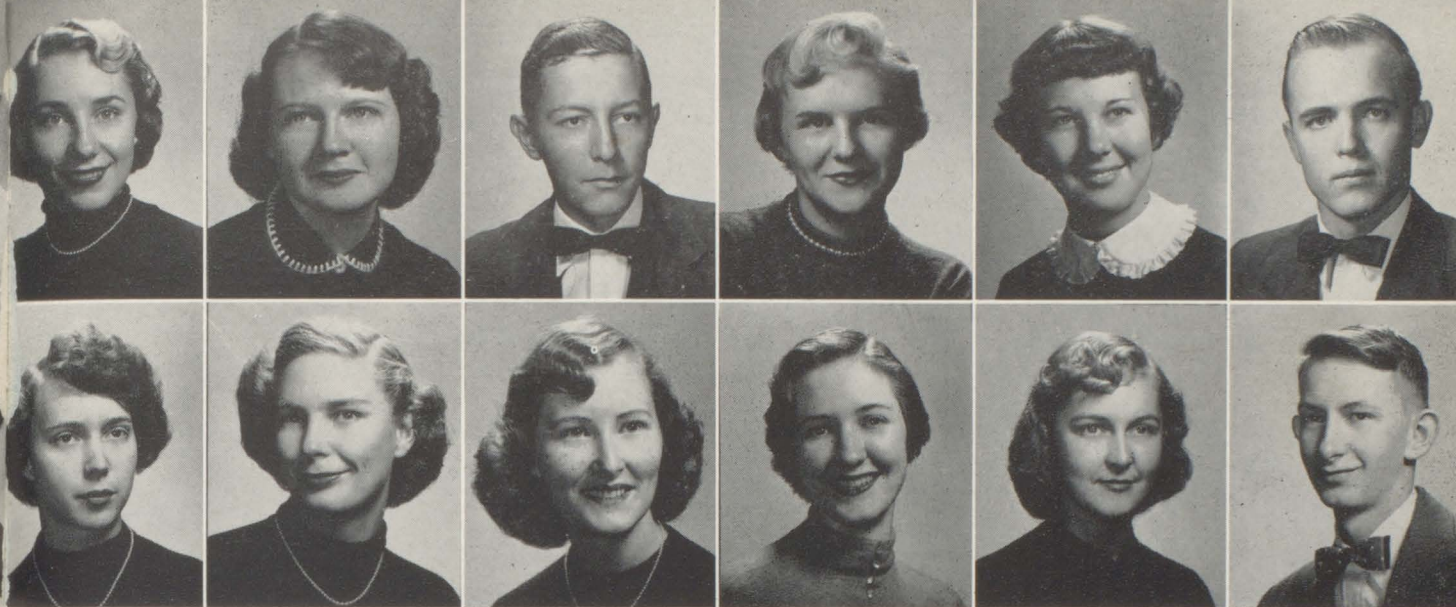
NAOMI BOLLING—F. H. A. (52-53, 53-54, 54-55).

MARTHA BOONE—Glee Club (52-53).

LUNELL DUCK—Beta Club (52-53, 53-54, 54-55) Secretary of County Assn. (53-54) Glee Club (52-53, 53-54, 54-55) Acapella Choir (54-55) F. H. A. (53-54).

NED DURANT — Science Club (53-54, 54-55) Vice President (54-55) Camera Club (53-54, 54-55) Treasurer (54-55) Library Club (52-53) Glee Club (54-55) F. F. A. (52-53, 53-54) Acapella Choir (54-55).





MARTHA EARLE — Beta Club — '52-53, '53-54, '54-55; Balcoala Staff — Salesman '52-53, Art Editor '53-54, Asst. Editor '54-55; Baldwin Beta Association — Vice-Pres. '54-55; Science Club — '52-53, Secretary '53-54, Treas. '54-55; Glee Club '52-53, '53-54; "B" Club — '54-55; Music Club — '52-53, Pianist — '53-54, Vice-Pres. — '54-55; Acapella Choir — '53-54; Cheerleader — '54-55; Senior Executive Committee—'54-55.

IRENE FERGUSON — D. O.—'53-54; Glee Club —'52-53, '54-55; F. H. A.—'52-53.

DEVAN FLOWERS — F. F. A.—'52-53, '53-54.

MADALINE HOWELL—Library Club '54-55.

NORMA HOWELL

JOYCE IRWIN—F. H. A. '52-53, '53-54, '54-55.

ADDIE MAE JERKINS—F. H. A. '52-53.

EVELYN JOHNSON—Library Club '53-54, '54-55.

FAYE JOHNSON—Business Manager Magazine Sale '55.

ALICE FRASER—Beta Club—'52-53, '53-54, '54-55; Camera—'52-53; Glee Club—'49-50, '51-52, '52-53, '53-54; "B" Club—'54-55; Music Club—'50-51, '51-52, '52-53, '53-54, '54-55; Student Council—'54-55, Treas. '54-55; Cheerleader '54-55; Band—'51-52, '52-53, '53-54; Junior Executive Committee—'53-54.

CARMEN FULLER

SILAS GANEY—F. F. A.—'52-53, '53-54.

JOAN GRANGER—D. O. '54-55, Secretary '54-55; Library '53-54.

MYRTLE HALL—F. H. A. '52-53.

RUTH HARPER—D. O. '54-55, Treasurer—'54-55; Glee Club '53-54.

GLORIA HART

SHELBY HAYLES—Glee Club—'52-53; F. H. A. —'52-53, '53-54.

BOBBY HOWELL — Key Club '52-53, '53-54, Vice-Pres. '54-55.

"Gossip Center"

Alice Fraser, Ann Zehner, Betty Langham, Wilbur Richerson, Earl Stephens.





Betty and Alice Salute "Big Jim"



NORA LEE JOHNSON — Beta Club 53-54, 54-55, F. H. A. 53-54, 54-55, Spanish Club 54-55.

MAZIE LEE JOHNSON — Glee Club 52-53, F. H. A. 52-53, 54-55.

LUVERNE JONES

OPAL JONES—F. H. A. 52-53.

RAY JONES — F. F. A. 52-53, 53-54, 54-55, Vice President 53-54.

BETTY LANGHAM — Beta Club 52-53, 53-54, 54-55, Glee Club 52-53, 53-54, "B" Club 53-54, 54-55, F. H. A. 53-54, Student Council 52-53, Cheerleader 53-54, 54-55, Head Cheerleader 54-55, Secretary Senior Class 54-55, Band 52-53.

DORIS LANGHAM — Library Club 51-52, F. H. A. 52-53.

TOMMY LANGLEY — F. H. A. 52-53, 53-54, Student Council 52-53, 53-54, Baseball 52-53, Basketball 53-54.

RAY LINAM — F. F. A. 54-55, Vice President 54-55.

CECIL LONG — F. F. A. 52-53, 53-54.

JOHN McDUFFIE — Beta Club 54-55, Key Club 53-54, 54-55, "B" Club 53-54, 54-55, Co-Chairman 54-55, Senior Class Treasurer 54-55, Sports Ed. Balcoala 53-54, Editor-In-Chief 54-55, Football 52-53, 53-54, 54-55, Captain 54-55, Boys State Representative 54.

LEROY McKINLEY — D. O. Club 53-54, 54-55, F. F. A. 52-53.

ANN McMILLIAN

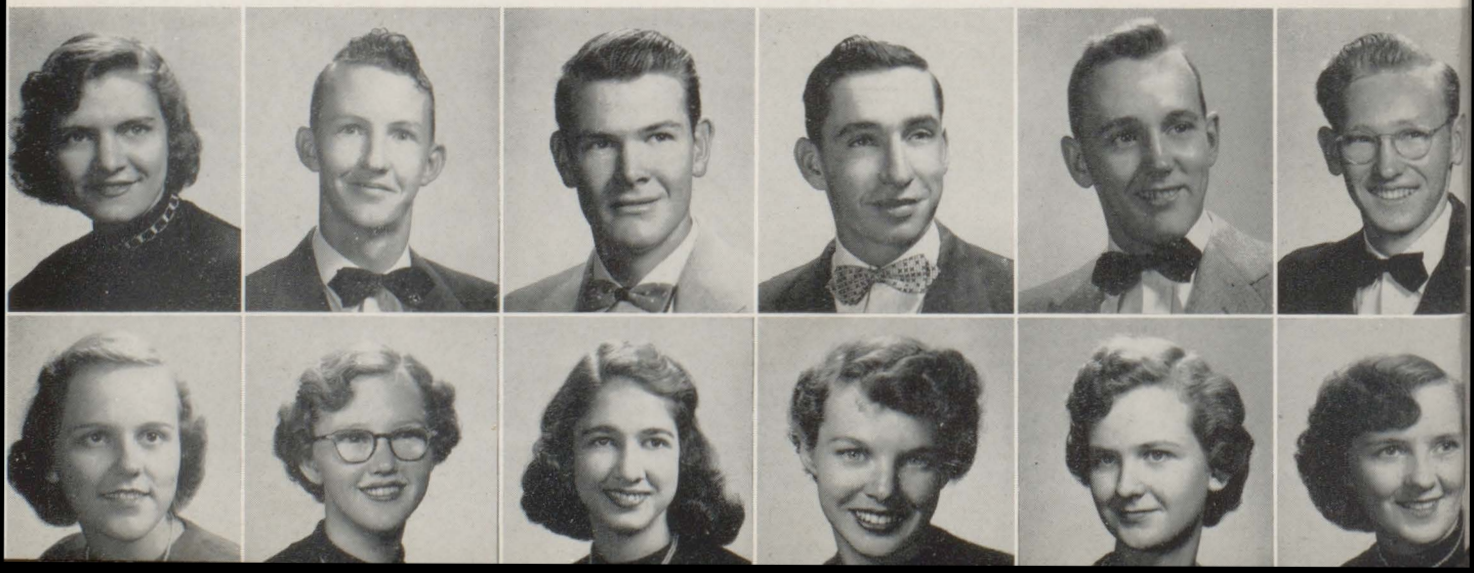
EDITH MIXON

CLARA MAE MORRIS — F. H. A. 52-53, 53-54, 54-55.

MARILYN MOSLEY

PAT MOTHERSHED — F. H. A. 52-53, 53-54, 54-55, Music Club 52-53, 53-54, 54-55, Corr. Secretary 54-55, Spanish Club 54-55, President 54-55, Majorette 53-54.

BETTY PARKER F. H. A. 52-53, Spanish Club 54-55.





J. D. PETERSON — D. O. Club 53-54, 54-55, President Room 54, 54-55, Football 53-54, Basketball 51-52.

EDNA EARL PHILLIPS

ELIZABETH POSTMA—Glee Club 53-54, 54-55, 54-55, Glee Club, 52-53, 53-54, FTA 54-55. Program Chairman 54-55, FHA 52-53, 53-54, 54-55, Reporter 53-54, President, 54-55, State Vice President of FHA 55.

MAXINE PRESLEY—Glee Club 52-53, 53-54, 54-55, FHA 52-53, 53-54, 54-55, Treasure 53-54, Acapella choir 52-53.

TOMMY PRESLEY — FFA 52-53, 53-54.

BETTY RUTH QUINLEY—Beta Club 52-53, 53-54, 54-55, D. O. 54-55, Glee Club 53-54, FHA 52-53.

EMOGENE QUINLEY—Beta Club, 52-53, 53-54, 54-55, D. O. 54-55, Glee Club 53-54, 54-55, FTA 54-55, FHA 52-53.

WARREN QUINLEY

WILBUR RICHERSON — Key Club 52-53, 53-54, 54-55, Student Council 54-55, President 54-55, Cheerleader 53, Baseball 53-54, 54-55, Basketball 54-55, Editor Tiger Rag 53-54, Band 52-53.

ANN RIDGEWAY FTA 54-55, FHA 52-53, 53-54, 54-55, Spanish Club 54-55.

BOB REID — Key Club 52-53, 53-54, 54-55, Director 52-53, President 54-55, Camera Club 52-53, President 53-54, Glee Club 52-53, 53-54, Student Council 53-54, Vice President, Acapella choir 53-54, Cheerleader 54-55, Sophomore Class Vice President, Balcola staff 54-55, Photographer. Band 52-53, 53-54, Senior Class Exeutive Committee.

JULIAN SCOTT—Science Club 54-55, F. F. A. 52-53, Football 54-55, Baseball 53-54, 54-55.

JAMES SHIVERS—53-54, 54-55, Camera Club.

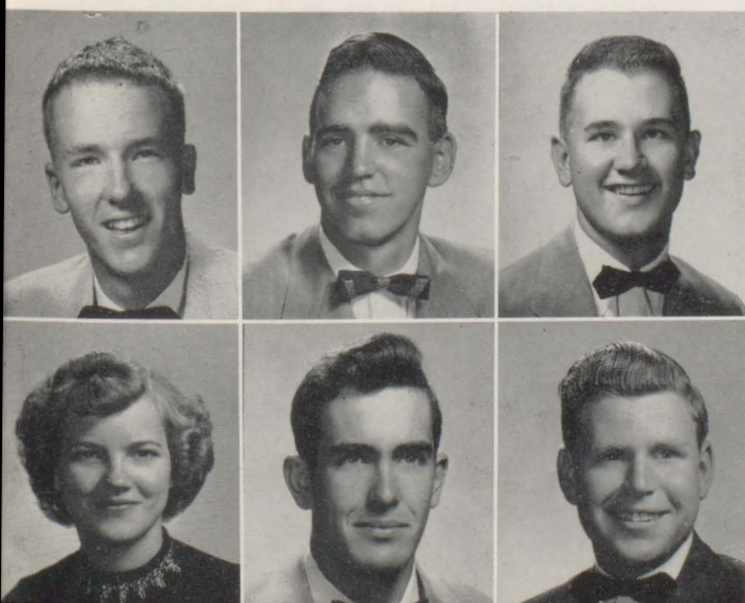
STEVE SIBLEY — Student Council 54-55.

DORIS SIMS — F. H. A. 52-53, 54-55.

RUFUS SIMS

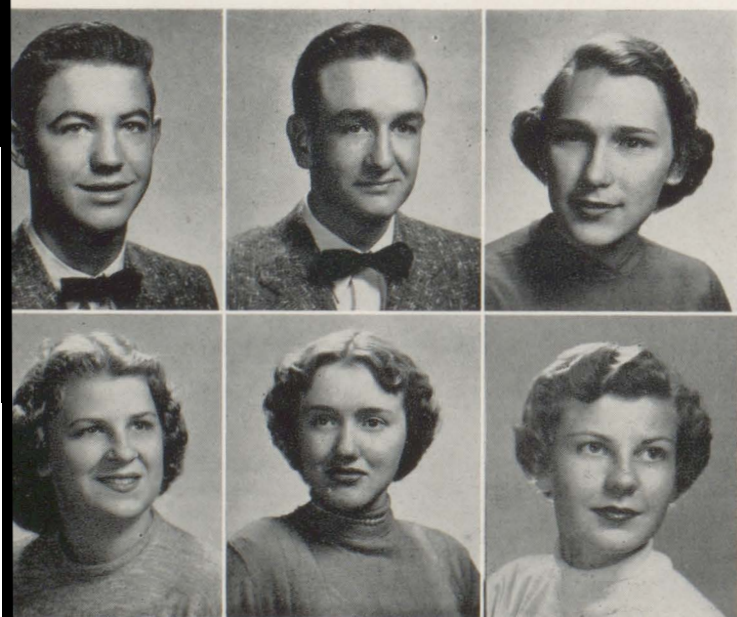
WILLIE HUGH SKIPPER — F. F. A. 52-53, 53-54.

Magazine Sales. \$2500 or bust.





1. DELORES ST. AMANT—D. O. Club (54-55); F.H.A. (52-53, 53-54); Library Club (52-53, 53-54).
2. EARL STEPHENS—Beta Club (52-53, 53-54, 54-55); Treasurer (53-54); President (54-55); "B" Club (53-54, 54-55); Co. President (54-55); Student Council (53-54, 54-55); Vice President (54-55); Football (52-53, 53-54, 54-55); Basketball (52-53, 53-54, 54-55); President of Sophomore Class (52-53); President of Sophomore Class (54-55); Asst. Editor of Tiger Rag (53-54).
3. EVIE STEWART—Beta Club (52-53, 53-54, 54-55); Library Club (52-53).
4. JEANETTE STEWART—Beta Club (52-53, 53-54, 54-55); F.H.A. (52-53); Band (52-53, 53-54).
5. RUTH TANNER — Library Club (52-53); Beta Club (52-53, 53-54, 54-55); F.T.A. (54-55).
6. BETTY JOYCE TAYLOR — Library Club (52-53); Glee Club (52-53); F.H.A. (54-55).
7. OUIDA THAMES — Library Club (52-53, 53-54, 54-55); Band (52-53); Glee Club (54-55); F.H.A. (53-54); Vice President (53-54).
8. BOBBY TRAWICK
9. MELBA TRAWICK
10. PEGGY TRAWICK—Beta Club (52-53, 53-54, 54-55); Library Club (54-55); Glee Club '55; F.H.A. (52-53, 53-54).
11. ROY WALLACE
12. MARY LOU WEEKLY—Glee Club (52-53, 54-55); F.H.A. (52-53, 53-54); Acapella Choir (52-53).



1. WALLACE WEEKLY
2. HUGH WHITE—F.F.A. (52-53, 53-54).
3. BETTY WIGGINS—Glee Club (53-54, 54-55).
4. JUNE WILLIAMS — Library Club (51-52, 52-53, 53-54); Glee Club (54-55).
5. JEANETTE YARBROUGH—Beta Club (52-53, 53-54, 54-55); D. O. Club (54-54); Glee Club (53-54, 54-55); F.T.A. (54-55).
6. ANN ZEHNER — Beta Club (52-53, 53-54, 54-55), Vice President (53-54), Corresponding Secretary (54-55); Science Club (53-54, 54-55), Corresponding Secretary (54-55); Glee Club (49-50, 50-51, 51-52, 52-53, 53-54, 54-55), Pianist (53-54, 54-55); Music Club (50-51, 51-52, 52-53, 53-54, 54-55), President (54-55).

SENIOR CLASS OFFICERS

John McDuffie, Treasurer; Betty Langham, Secretary
Joyce Ballard, Vice President; Earl Stephens, President



THE SENIOR CLASS OF 1955 LAST WILL AND TESTAMENT OF

We the Senior Class of 1955, being of unsound minds and no memory, do hereby make, publish and declare this our Last Will and Testament, hereby annulling any and all former Wills and Testaments heretofore made by us.

FIRST: We the Seniors leave to dear old B.C.H.S. our various autographs carved on each table, chair and desk in the school.

SECOND: We leave to future generations the new tile floor in the auditorium, along with a terrible threat to anyone who dares to disfigure it.

THIRD: We leave to Mr. Daniels a lie detector and a paddle. On second thought, we leave two paddles, so he can apply licks of knowledge to the seat of learning with both hands.

FOURTH: We leave to Mr. Echols three hens and a pencil, so he can have boiled eggs with the date written on them for all his classes.

FIFTH: We leave to Miss Nichols all the themes and essays we have written. She would probably make a profit if she should have them published.

SIXTH: We leave to Mrs. Noonan another class of quiet, orderly Seniors like we were.

SEVENTH: We leave to Mrs. Nealey a typewriter that spells all words correctly, and a bell-hop to answer the telephone.

EIGHTH: We leave to Mr. Nealey an alarm clock to use as a stop-watch in giving speed tests.

NINTH: We leave to Miss Leonard a roll of tape and a bottle of aspirins for the medicine cabinet.

TENTH: We, the Senior Class of '55, leave to next year's class the great joy and honor of being Seniors.

ELEVENTH: We leave to the Class of '56 the senior privileges, if they can get them.

TWELFTH: We leave to next year's Seniors our ability to sell magazines and the friendly competition that goes with it.

THIRTEENTH: We, the Seniors, leave to next year's class our luck in being able to get by with anything.

FOURTEENTH: The Seniors of the Glee Club leave to next year's Glee Club students their beautiful voices and their ability to stay on pitch.

FIFTEENTH: The Seniors of the Beta Club leave to next year's Beta Club their ability to make straight A's.

SIXTEENTH: The Seniors of the Key Club leave to the school the many services they have done for it.

SEVENTEENTH: The Senior members of the Science Club leave to the whole world the results or the important scientific experiments they have performed.

EIGHTEENTH: The Senior boys leave to every boy in school their respect and chivalry toward the girls.

NINETEENTH: The Senior girls leave to the Junior girls their love for participating in beauty contests, but not their beauty. They're going to need that.

TWENTIETH: The married girls in the Senior Class leave to all the girls in the Junior Class their formula for happy marriages.

TWENTY-FIRST: The Senior football stars leave to next year's team their ability to lose graciously.

TWENTY-SECOND: The Seniors of the F. H. A. leave the bake sales and slumber parties to the Juniors, as they go out to try their luck at being real homemakers.

TWENTY-THIRD: The basketball players of the Senior Class will to next year's basketball team their ability to fall and remain unhurt.

TWENTY-FOURTH: The Seniors in bookkeeping class leave all practice sets to anyone brave enough to tackle them.

TWENTY-FIFTH: The Senior boys of the F.F.A. leave woodworking to the Juniors, so they will have time to milk cows and plow.

TWENTY-SIXTH: We, the Seniors, leave to the whole student body the spirit of rivalry between us and Atmore High.

TWENTY-SEVENTH: The Executive Committee its ability to come to decisions quickly and easily.

TWENTY-EIGHTH: We, the Seniors, leave to the Juniors our respect for the faculty and our methods of concealing it.

TWENTY-NINTH: We, the Class of '55, leave to the next Senior Class our love for our Alma Mater and our sincere affection for each other.

THIRTIETH: If we possess anything which is not included in this Will, we leave it to whoever finds it.

THIRTY-FIRST: We, the committee who wrote this Will, leave the job of writing next year's Will and Testament to anyone who thinks he can do it.

THIRTY-SECOND: We, the Seniors of 1955, leave and are glad to be able to.

EMOGENE QUINLEY
English

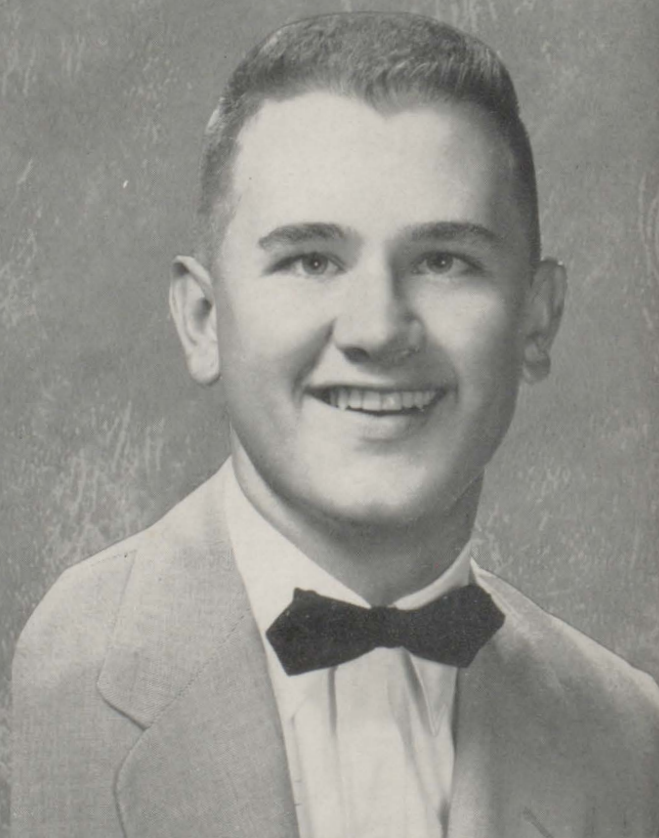


SENIOR



LUNELL DUCK
Second Place English

STEVE SIBLEY
History



MELBA TRAWICK

History



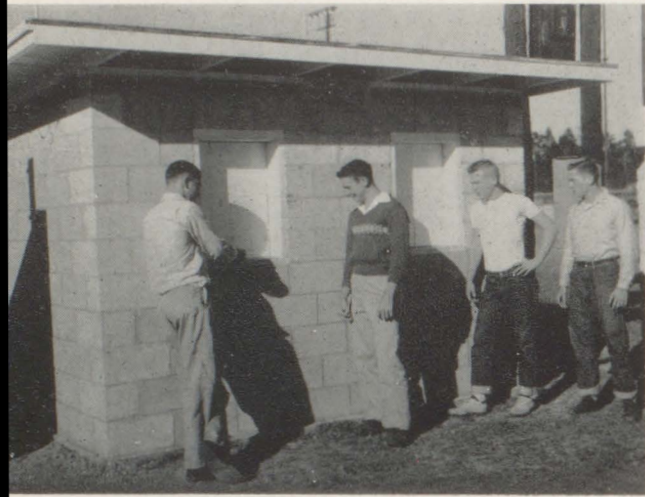
HONORS



MARTHA EARLE

Science

JUNIORS



Junior Key clubbers view handywork



Juniors at Beta Convention

"Juniors—Room 3—Room 6—Room 5"

This schedule on the board was our first acquaintance with our homerooms for the '54-'55 year. It was in these three rooms that the business of the year was transacted. What business!! First there was the election of class officers who were as follows: Jerry Barnes, President; George Robinson and Margaret Holmes, Vice President; Anne Reid, Secretary-Treasurer

—These were the people who served us so capably during the year.

The juniors were quite active in extra-curricular activities this year. The majority of the starting football team was juniors, and there were several juniors on both the basketball and baseball teams.

Representatives from the Junior class attended All-State Band at Tuscaloosa and band festivals at Troy and Mobile.

Several juniors brought in outside honors in F.H.A., Key Club, Beta Club, Science Club, Student Council.

Finally there was the annual Junior-Senior Prom. The theme this year was "Showboat," and we certainly hope it was a pleasant occasion for our distinguished Seniors.

Let's hope that next year's Juniors will appreciate being Juniors, who we think are the best!



Class Officers:
"Monk" Robinson—V.P.
Jerry Barnes—Pres.
Margaret Holmes—V.P.
Anne Reid—Sec.-Trea.



Charlie Aylin
Romeo Coleman

John Baggett
Mildred Durant

Jerry Barnes
Nancy Durant

Jimmy Bell
Myrtle Lou Eddins

Ann Catherine Brannan
Pauline Eubanks

Murry Bryant
Nancy Friel

Johnny Chason
Pearl Godwin

More Beta Convention



Lottie Graham
Annette Newton

Margaret Holmes
Henry Postma

Floyd Jackson
Wayne Post

Ileen Lee
Jimmy Presley

Vermelle McDill
Judy Ann Rabon

Sylvia Mosely
Anne Reid

Hope Neely
Ann Richardson





George Robinson

Joyce Smithart

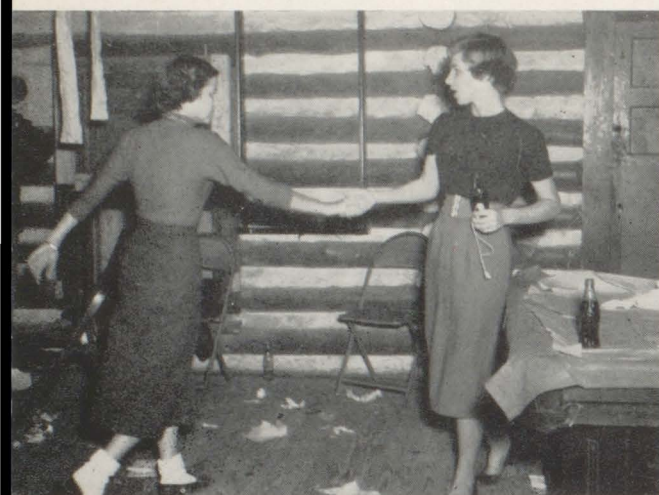
Irma Steedley

Moonyene Stokley

William Stough

Mattie Jean Strickland

Cecil Trawick



Shake, Rattle, and Roll



Bull Session

Billy Walker

Doyle Weekley

Barbara West

Kenneth White

Neil White

Ben Willis

Frank Yarbrou



SOPHOMORES

Sybil Baggett

Jane Ballard

Pat Bell

Tony Bodden

Jane Bolen

Doris Ann Brown

Shirley Caprar



Patsy Catrett



CLASS OFFICERS

Earnest Miller, President

Dorotha Harris, Julia Wallace
Earl Chancellor, Vice Presidents

Roland McNeeley, Secretary

Clarice Chaffin
Roslyn Dyess
Mary Lou Griffin

Earl Chancellor
John Emmons
Sabra Hadley

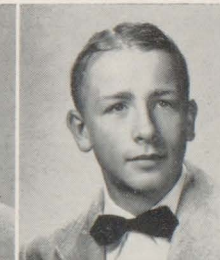
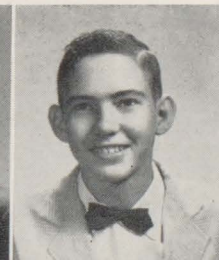
Elma Chestang
Carolyn Eubanks
Robert Harrell

Danny Cook
Mike Eubanks
Dorothy Harris

Jyon Corbett
Carolyn Feminear
Carroll Head

George Day
Tony Gibson
Betty Jo Heaton

Wilmer Durant
James Graham
Jo Anne Hoffma





That ol' grand march

SOPHOMORES

The sophomores entered the 54-55 session determined to make themselves the best sophomore class ever to go through the portals of B.C.H.S. They started on the right foot by placing several boys on the football team.

They kept right on piling up honors by having Shirley Caprara elected "Ag. Queen."

Then came the ever popular Sophomore Hop, which was held at the customary time just before Christmas. The theme this year was "Winter Wonderland." The Hop was very successful and put every one on the Christmas mood.

At the end of the year Sophs were very noticeable in the various end of school activities such as Band and Glee Club concerts, piano recitals and graduation parties.

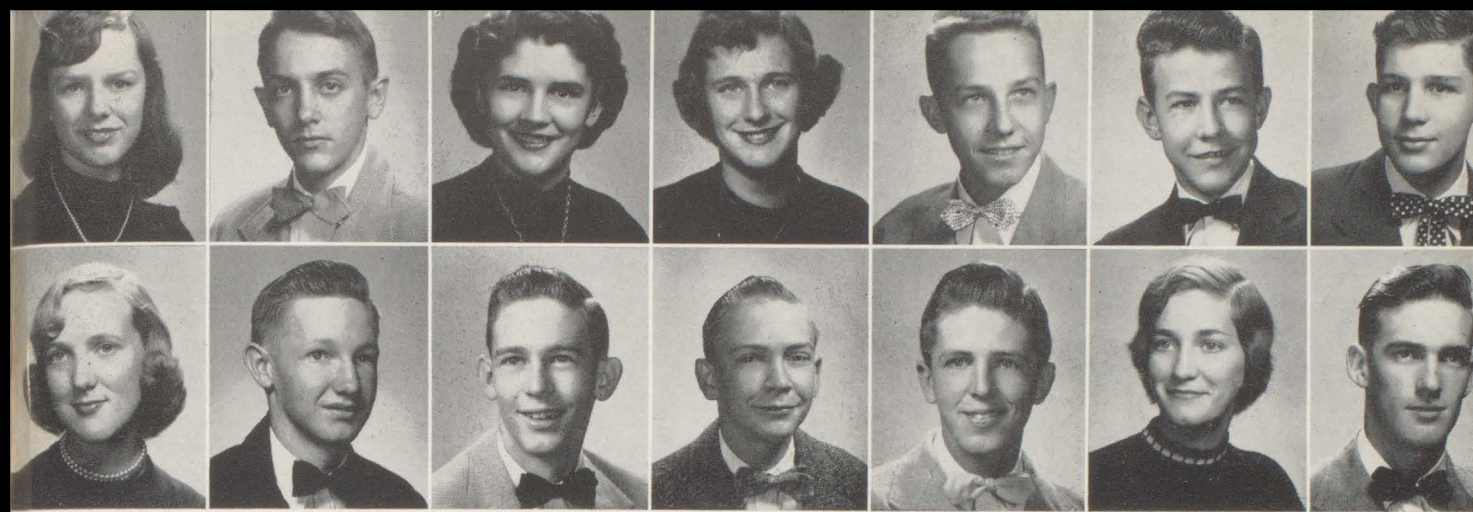
The may not have been the "Best", but they certainly weren't the worst.



Dancing at the Hop



Chow line at the Hop



Louise Howell	John Knight	Sylvia Knight	Ruth Lambert	Leslie Lee	Herman Martin	Tim McConnell
Patsy McDuffie	Charles McKinley	Roland McNealy	Buddy McPhaul	Ernest Miller	Lillian Mosely	Lance Phillips

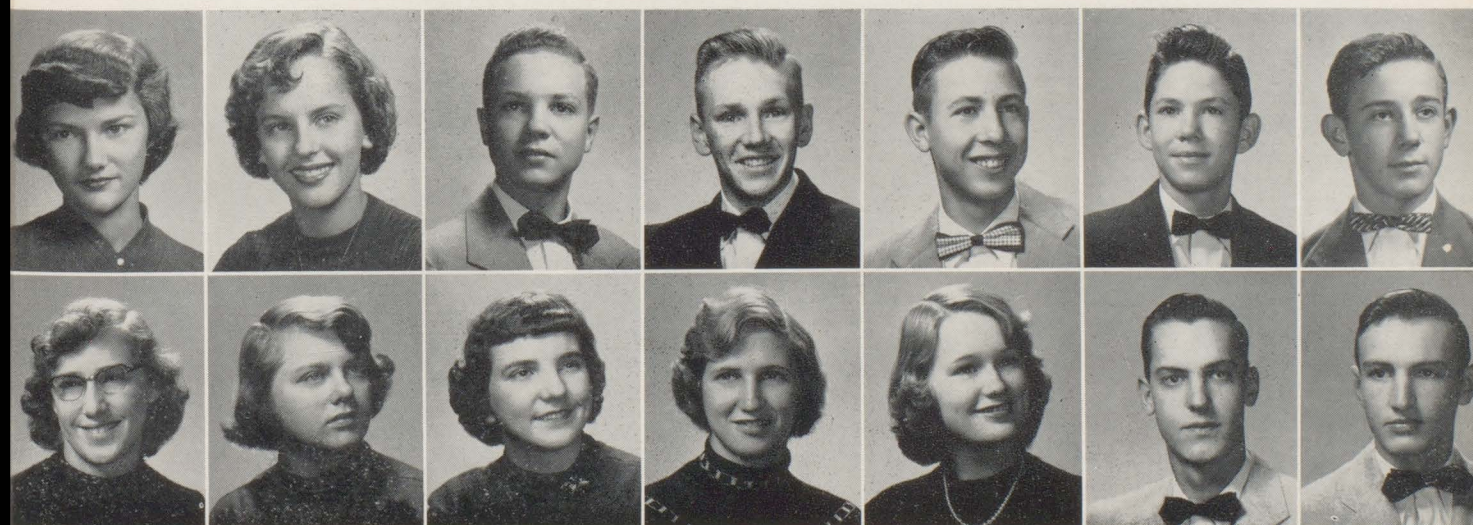
Living Dangerously



Sophomores Football Heros



Peggy Phillips	Jean Reid	Joseph Robinson	Thomas Robinson	Clarence Roley	Aubrey Rowland	Jimmy Smith
Eloise Stuart	Rocnelle Stuart	Ada Sutton	Carol Trawick	Julia Wallace	Glenn Wasden	Dan Windham



Freshmen



Our freshmen scientist

The ninth graders participated in many things at B.C.H.S. this year. Many of them were in the band and several of the majorettes were from the freshmen class.

The studies were getting a little deeper and required more time. Of course study halls are always used for studying, especially by the "frosh." One would always find a group of freshmen at the ball games, yelling for their

classmates on the various teams.

All in all the freshmen class had a good year. They participated in many of the clubs, sports and they were always ready for fun. Foremost in their minds was finishing up as freshmen and becoming sophomores. Many things will be awaiting this eager group as they enter the doors of B.C.H.S. in the fall of '55 as full fledged "Sophs."

R. Anderson
P. Arrington
N. Beasley
E. Bell
L. Bell
C. Bray
L. Brown
B. Carpenter



L. Cattrett
D. Chesnutt
P. Chestang
B. Collins
A. Conway
D. Corley
J. Cox
B. Crosby



G. Cruzan
E. Davidson
B. Davis
E. Davis
J. Davis
J. Downey



PAGE

MISSING

PAGE

MISSING

S. Hill
B. J. Hinote
W. Hinson
C. Hoffman
M. Jacobson
P. Jackson
K. Jaye
L. Jerkins
R. Jerkins

B. Johnson
C. Johnson
D. Johnson
F. Johnson
P. Johnson
R. Johnson
R. Jordan
H. Kelly
C. Kirby

D. King
S. Langham
C. Lindsey
H. Lindsey
I. Lindsey
W. Lindsey
D. Long
J. Long
S. Martin

O. McAtwin
G. McCartha
M. McDill
S. McDill
R. McKissock
A. McPhall
P. Miller
L. Mikan
S. Mixon

R. Money
M. R. Moorer
D. Mosley
J. L. Mosley
V. Mosley
L. Murphy
A. Nix
G. Oakes
B. Owens

P. Page
I. Patterson
B. F. Peavy
J. Perkins
L. Quinley
J. Rider
P. Rider
P. Rider
P. Rider

B. Robertson
K. Robinson
D. Rodgers
D. Roland
L. Ryan
H. Scoggins
C. Seay
M. Seay
L. Simpson

D. Smith
B. Steele
A. Stewart
J. Stewart
L. Stewart
M. Stewart
K. Taylor
J. Tolbert
R. Tolbert

R. Thompson
E. Thompson
H. Tillman
H. Tillman
J. Trawick
L. Trawick
L. Vines
T. Vines
D. Vinson

C. Walder
S. Weatherford
D. Weekley
D. White
W. White
H. Williams
M. Wurst



Seventh Grade

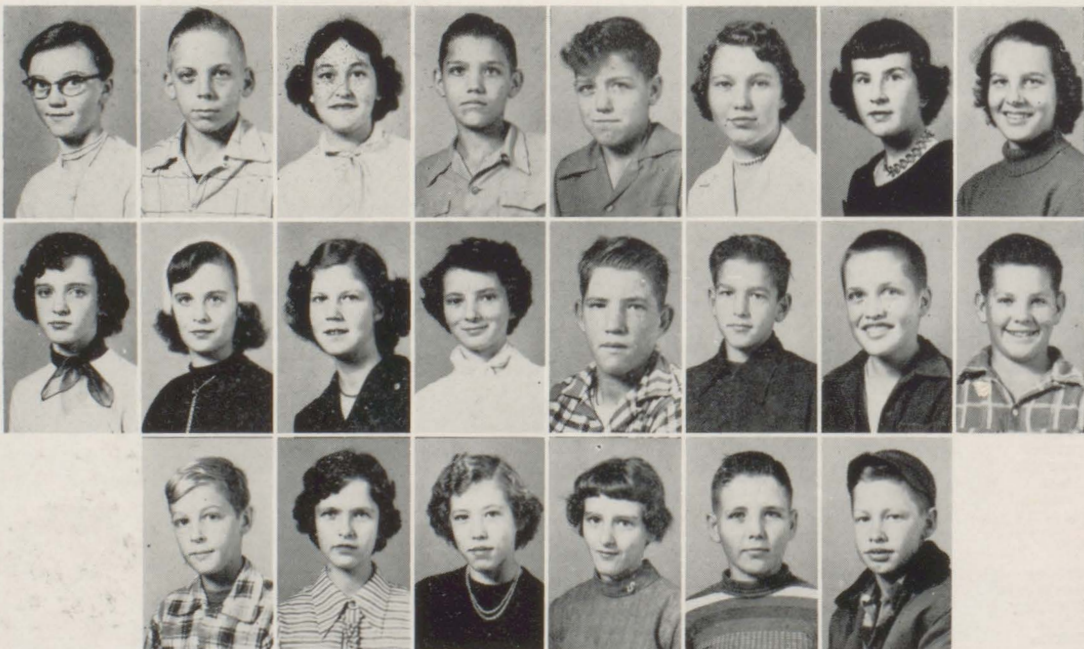


Active Seventh Grader

"Theirs not to reason why, Theirs not to make reply, Theirs but to do or die." This might be the slogan for all seventh graders. We are very proud of our seventh grade class. They entered into the schools activities with the interest of a "veteran" senior. Many of them were seen in the coats and ties of the "Tiger Band." Also several were seen in the black and white

of the Glee Club. As is the natural course most seventh grade classes are thought of as something to be ridiculed, but this year's class made us wake up to the truth. They are now "high schoolers," and that is just how our's acted. Hats off to you and watch out ol' eight graders —You're being pushed.

M. Aaron	V. Adams	C. Baggett	J. Baugh	P. Baugh	C. Bray	D. Bryars	
P. Cabiness	J. Carter	A. Chandler	A. Chastang	B. Clemmons	J. Clemons	K. Cooper	E. Byrd
	J. Crenshaw	C. Culver	A. Daniels	A. Daniels	F. Davis	J. Davison	D. Corbett



PAGE

MISSING

PAGE

MISSING



ACTIVITIES



ACTIVITIES

ACTIVITIES

LIBRARY CLUB

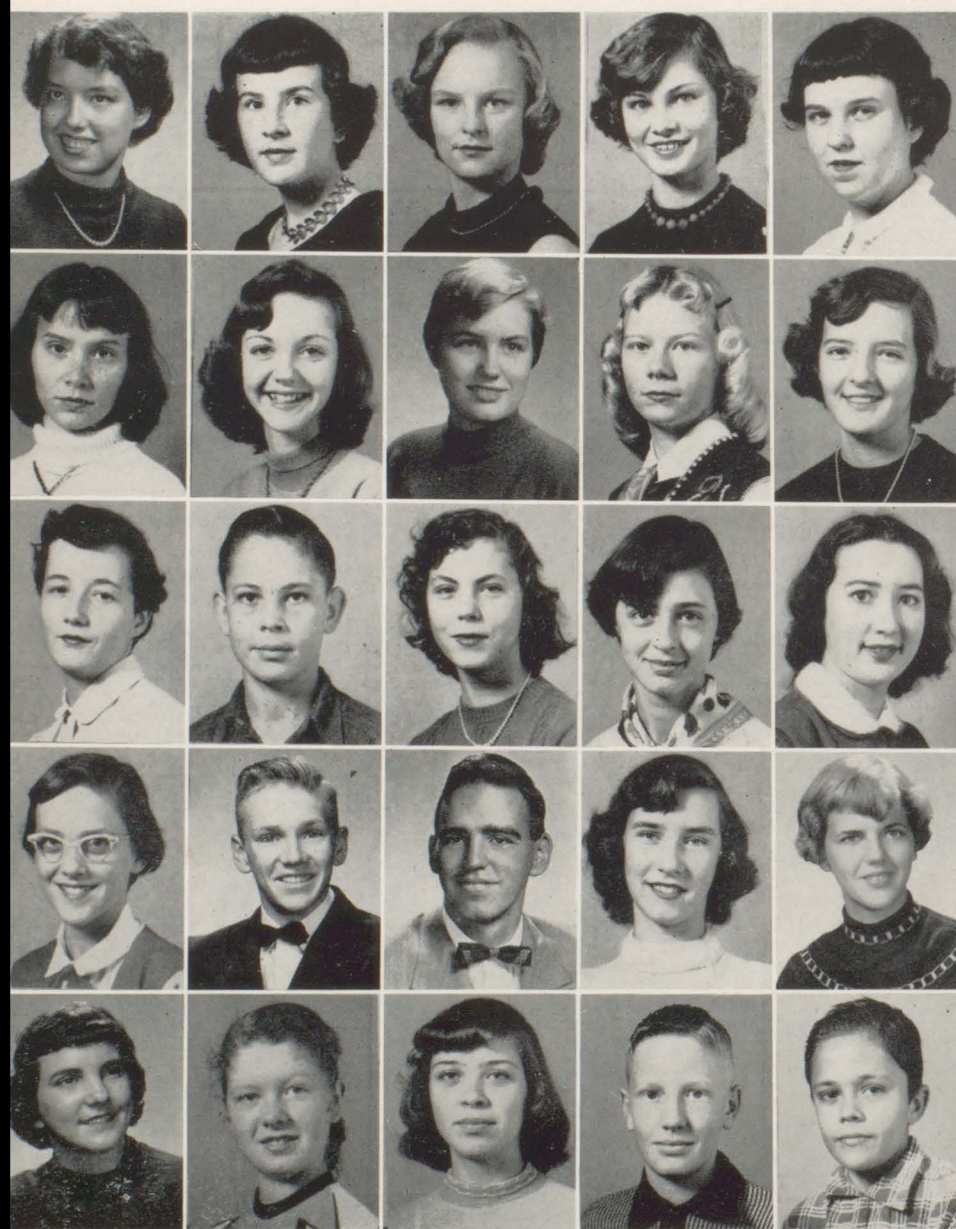
Perhaps one of the most necessary clubs in B.C.H.S. is the library club. The main functions are to help Mrs. Stough with the many minute tasks involved in keeping a library and to learn more about how to run a library.

The club this year presented a very interesting assembly program to the school, which consisted of several skits written by the mem-

bers and taken from "Little Women", by Alcott.

The clubs officers were, President of the Senior Division: Thomas Robinson, Vice-President: Doyle Weekley, Secretary: Jo Ann Hoffman, Treasurer: Pat Trawick.

Officers of the Junior Division were Alice Cox, President; Betty Nell Robertson, Vice-President.



Sybil Baggett
Delores Bryars
Nobie Cooper
Alice Cox
Delores Gainer

Gay Granger
Joyce Hastings
Jo Ann Hoffman
Louise Jackson
Dorothy McDill

Louise Murphy
Allen Nix
Carol Perkins
Faye Prestwood
Gloria Rider

Betty Nell Robertson
Thomas Robinson
James Shivers
Jean Sibley
Joyce Smithart

Ada Sutton
Tonya Vines
Margaret Waldrop
Coy Walker
Sidney Weatherford

Future Teachers of America



Officers of F.T.A.

Barbara Powell, Program Chairman

Irma Steedly, President

Robbie Cook, Secretary-Treasurer

Ann McMillian, Vice President

F.T.A.

Although it is one of the newest clubs at B.C.H.S., the Future Teachers of America club has already turned out to be one of the most successful.

It has grown rapidly in its two years of existence and also has great potentialities.

As the name implies, the club is for students who wish to enter the teaching profession. They receive instructions and also do practice teaching in Grammar School.

The F.T.A. Club was under the fine sponsorship of Mrs. Amelia Bennett.

Jane Ballard
Elizabeth Postma

Pat Bell
Emogene Quinley

Patsy Catrett
Ruth Tanner

Nora Johnson
Barbara West

Pat Mothershed
Jeanette Yarbrough



The KEY CLUB

Under the most capable guidance of their beloved Kiwanis advisor, Mr. J. H. White and the faculty advisor, Mr. Wilford Nealy, the Key Club has once again enjoyed a very successful year.

The Key Club is sponsored by the local Kiwanis Club and is set up on an International scale. The Bay Minette Key Club is highly indebted to its sponsoring Kiwanis Club for making such a wonderful opportunity as Key Club possible.

To start the year off, the club had the advantage of the knowledge that eight members and their sponsor aquired at the International Convention in Philadelphia, Penn. in July. With this knowledge, the club was more able to carry out its various service, money-raising, and social activities. Among the projects completed by the club were: Paid for ticket office at school stadium, conducted a book drive and donated 40 books to school library, bought a \$240 opaque projector for the school, gave four dozen ash trays to the school cafeteria to use at community banquets, donated \$100 to the Home Ec. Dept. for their food laboratory renovation, and co-sponsored the hobby show.

The club assisted in raising funds for several local charity drives and took full responsibility of recruitment of donors for the local blood bank visit. The 211 pints of blood donated were the most ever received in Bay Minette.

Money was raised for the various projects by selling Christmas cards, distributing hand bills for local merchants, and various other means.

The year was well rounded out by the numerous social activities which included a Christmas party at the Gulf, a shrimp supper, a hay ride, a swimming party at Foley, the Sr. Camp at the Gulf, and others.

A full program is also planned for the summer.

The above projects brought to the Bay Minette club the distinction of being the top club in Key Club International, as they won the International Silver Section Achievement Award, the first to the Alabama District.

Bay Minette brought more International recognition to Alabama as Jerry Max Barnes was elected International Trustee.



OFFICERS—Bobby Howell, Vice President; Jerry Barnes, Secretary; Bob Reid, President.

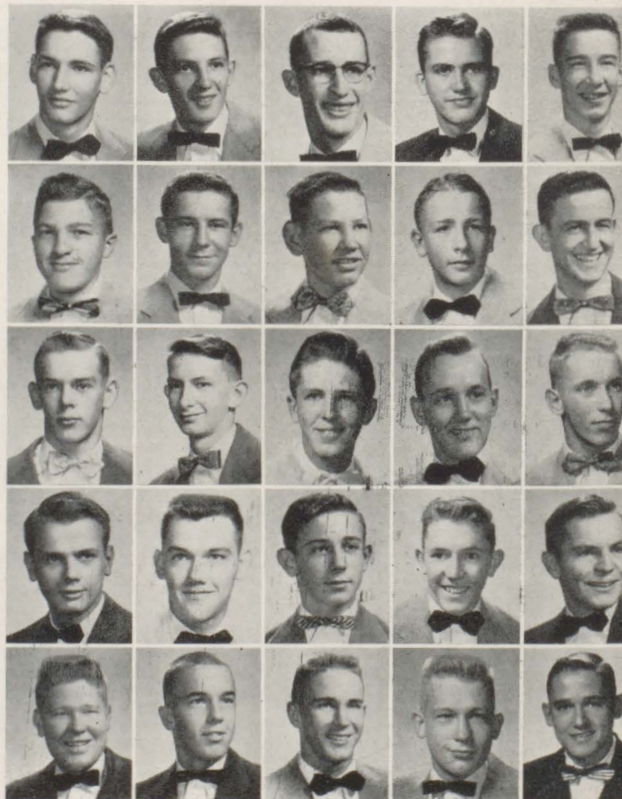
Charlie Aylin
Jerry Max Barnes
Don Boan
Murry Bryant
Clyde Byrnes

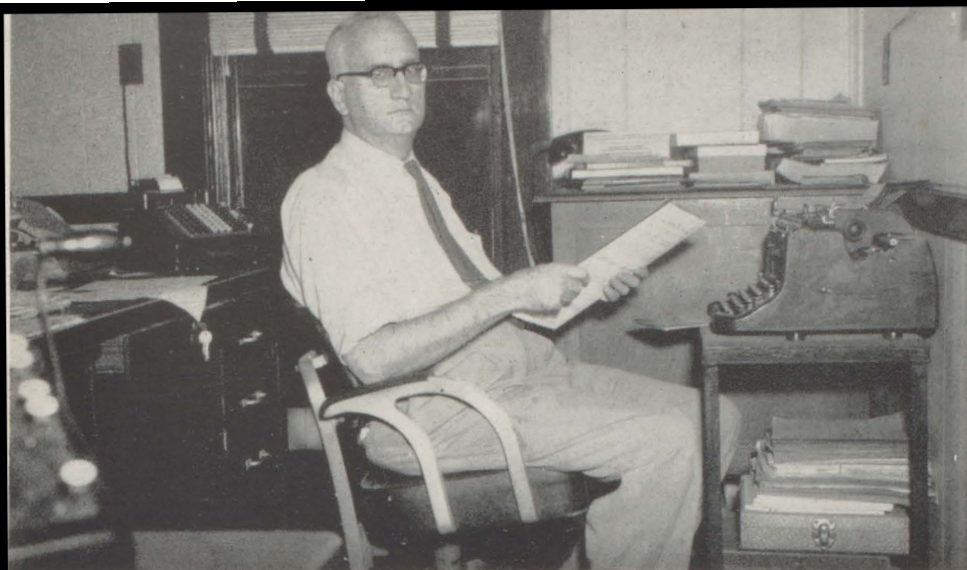
Earl Chancellor
Johnny Chason
Jyon Corbett
George Day
Tony Gibson

Carroll Head
Bobby Howell
Ernest Miller
John McDuffie
Wayne Post

Bob Reid
Wilbur Richerson
Jimmy Smith
Earl Stephens
"Chubby" Stough

Billy Walker
Kenneth White
Neil White
Ben Willis
Buddy Yarbrough





Key Club Advisor
Mr. John "Judge" White



Ernest and Neil
collect for the
March of Dimes



Key Clubbers
at their weekly
meeting.

Directors—left to right—"Judge,"
Johnny Chason, Charlie Aylin, Ken-
neth White, Jerry Barnes, Bobby
Howell, and "Chubby" Stough, Cam-
era shy, Bob Reid.



F. H. A.

The Future Homemakers of America is an organization which correlates with the Home Economics program.

This year the Bay Minette Chapter reached an all time high in membership. With this extra high membership the club was able to put over better projects. The chapters main project was that of remodeling the Home Economics Laboratory. Through aid from the county and other sources, the lab will be finished.

Bay Minette's F. H. A. Chapter had fun and honor in '54-'55. Hobo Day was hilarious and gave a little extra gaiety to the classes for a day. The Bay Minette Chapter was the only Alabama chapter to be visited and evaluated by the National Advisor, Miss Marguarite Scruggs. The officers were honored to have been on television and Kiwanis programs.

The "Mother - Daughter" Banquet topped off a wonderful year. The theme was Indian Summer and everything was done Indian style.

The chapter is proud of Barbara Powell's being a state officer. The chapter showed recognition through the selection of her as a Miss F. H. A. of the month.

All in all the F. H. A. had a very successful year.





Tea for the Home-Ec.
girls.



F. H. A. Installation



Drior's Fashion Show

F. H. A. Chow Line.

Some F.H.A. Celebrities.



Future Farmers of America

Agriculture plays an essential part in our life. Among the organizations which strive to improve agricultural methods are the high school F. F. A. chapters. Baldwin County High School offers an excellent agricultural course and has an extremely active F. F. A. Club. The club won several honors as proof of their many activities.

Carroll Head of Stapleton represented Baldwin County in the semi-final of the Future Farmers of America Speaking Contest in March. Carroll was selected by virtue of having won first place in both the local contests, and also taking first honors in the county contest against the three other county high schools.

Donald Boan achieved another honor by winning the Baldwin County corn growing championship. Boan grew 109.8 bushels of corn per

acre. Donald was also named Southwest Alabama District corn growing champion.

Shirley Capara was crowned Agriculture Queen at an assembly program. Shirley was present at all appropriate activities of the F. F. A. throughout the year. She also led the annual club dance.

The conclusion of the years activities was the annual Father and Son Banquet held April 15. L. D. Owen, Jr. was master of ceremonies for the celebration. Guests of honor at the banquet included W. C. McGowan, Superintendent of the Baldwin County Board of Education, J. T. Bradley, a trustee of the city board, and Shirley Capara, 1955 Agriculture Queen. A skit was used to demonstrate the work of the Bay Minette Club.

President Rufus
Crowns Agriculture Queen,
Shirley Capara



F.F.A. OFFICERS

Billy Bryars—Sentinel

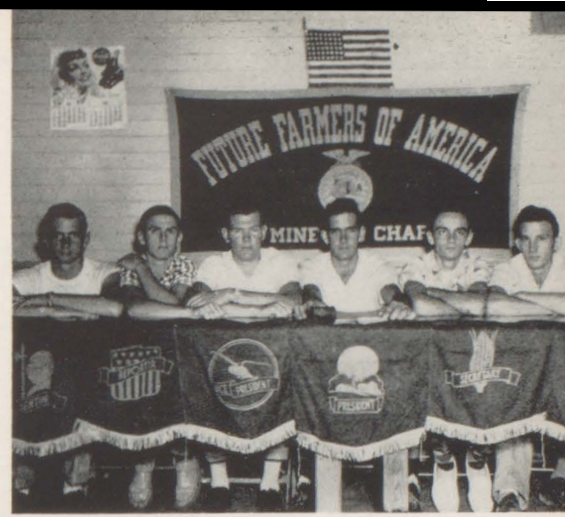
Bob Trawick—Reporter

Ray Linam—Vice President

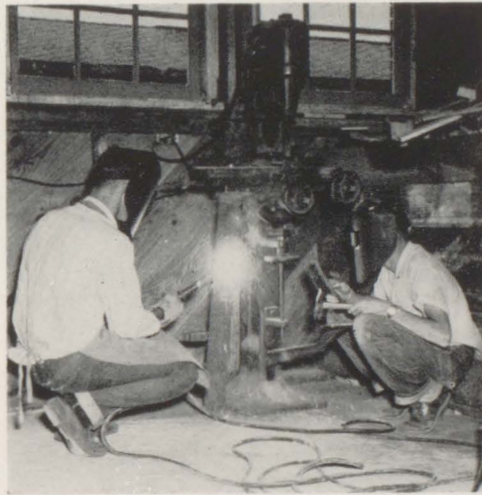
Rufus Sims—President

Mike Eubanks—Secretary

Lloyd Bryars—Treasurer



F.F.A. Boys
At Work



Mr. Nall shows the boys
how to survey.



THE BAND

Bottom Row — Left to Right — Glinda Head, Ileen Lee, Ruby Yarbrough, David O'Neil, Jane Ballard, Sam Hill, Yvonne Stewart, Myrna Jean White, Pat Page, Bootsie Russel. Second Row — Billy Scoggins, Sharon Richerson, Annette Newton, Jayne Bolon, David Chesnutte, Toni Bodden, Faye Richerson, Julia Bristow, Carolyn Dean, Sharon Langham, Dorothy Corly, Billy Johnson. Third Row — Earl Chancellor, Jean Reid, Patsy Catreet, Pat Bell, Vermelle McDill, Marie Eddins, Jean Friel, Patsy McDuffie, Judy Skinner, Claud Gross. Top Row — Jyon Corbette, Ruth Lambert, Nancy Friel, Myrtle Lou Eddins, Barbara Harwood, David Lindsey, Anna C. Brannan, Hope Neely, Charlie Aylin.



The B.C.H.S. "Tiger Band" started the year under new management. Mr. Ford Alford, a graduate of Southeastern Louisiana College, was the new bandmaster. The band had a very successful year, beginning as usual with the football shows. The job of working up these shows is not as easy as it might look, but this band was always fully prepared.

The band this year had quite a few very good beginners, which insured a good future band.

Then, of course, there is always Mardi Gras, which is a lot of work but it's well paid for in fun and activity and the thrill of meeting other band members and making new friends. Several "Tiger Band" members made "All State" and went to Tuscaloosa and played with the "All

"Band on parade"

AT WORK



Majorettes — Left to Right — Glenda Nance, Jenny Thames, Ilena Allen, Marianne McGaw, Wilma Durant, Carol Mauldin, Linda Hinote, Sue Kilcrease, Pat Presley, Head Majorette, Judy Lambert.

State Band." Three of these were medal winners, Ann Blackburn (clarinet), Pat Bell (thrombone) and Judy Skinner (Sax).

Then to top it all off was the Spring Concert. These Concerts are always a big thing with the band and the public.

The officers this year were Ruth Lambert, President; Toni Bodden, Secretary, and Treasurer; Nancy Friel and Judy Lambert, Librarians; and Sam Hill, Quarter-Master.

All in all we think our B.C.H.S. band deserves a lot of credit for a fine year.



Waiting for Big Jim's Inauguration

THE BAND AT PLAY



Uncrowded Bus?



The Monster!



They Do Practice

Spanish Club

The Spanish Club, or "El Club Espanol" as the club members say it, is the only foreign language club at B.C.H.S., therefore making it outstanding. The members of the club are naturally the students who take Spanish.

This club offers a variation to the usual "grind" of other subjects. Programs are presented for education plus entertainment.

One of the "favorable factors" of the club is the fact that refreshments are served at the meetings by various members. The club sponsor, Miss Ruth West, is very popular with the members.

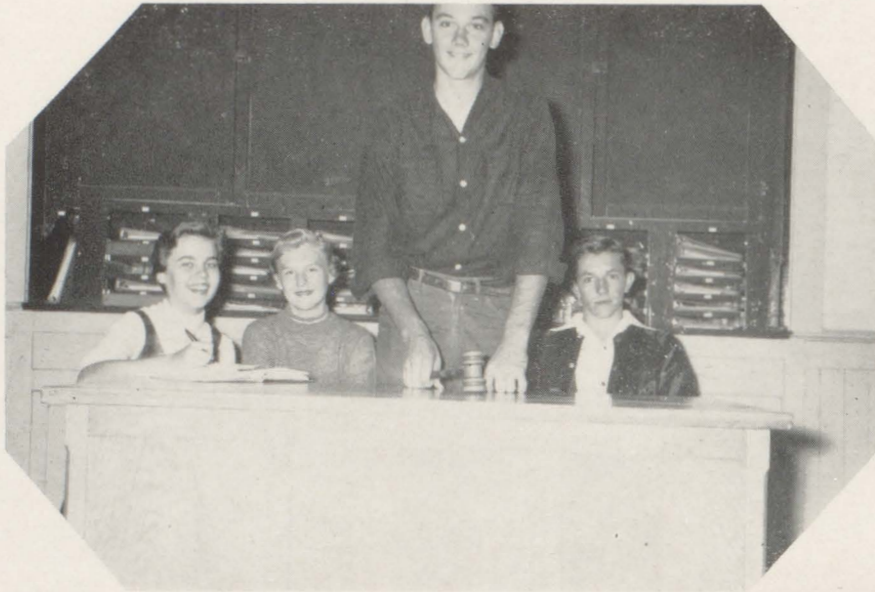
In a "sum up," we could say that the Spanish Club is "Grande."

Top Row—Jane Ballard, Joyce Ballard, Tony Gibson, Nora Johnson, Anne McMillian.

Bottom Row—Pat Mothershed, Bettye Parker, Ann Ridgeway, Ada Sutton, Barbara West.



Student Council



Officers: Ann Blackburn, Secretary; Alice Fraser, Treasurer; Wilbur Richerson, President; Earl Stephens, Vice President.

The duty of the student council representative is to represent his homeroom at the meetings, to discuss and vote on laws concerning the school, and to report back to his homeroom any ruling of the council.

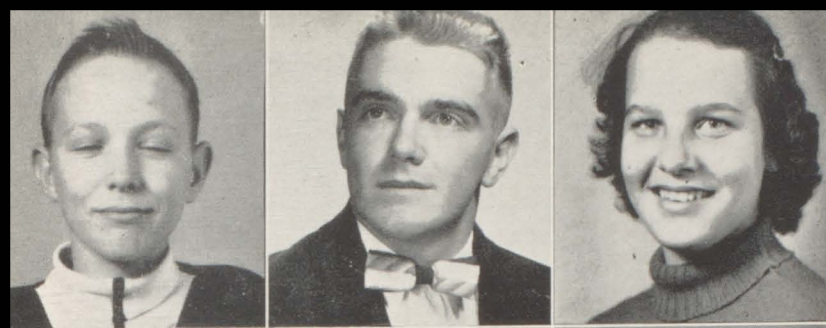
Since the Student Council is maintained for the benefit of the student and the school, it is consequently one of the most important and busiest school organizations.

The members of the Student Council are

usually students who are dependable and interested in seeking out projects each year that will make the school a better one for all students and teachers.

This year one of the most important projects was the effort by the council to create a better school spirit.

Mr. Adophos Jones is the councils' advisor, and the president this year was Wilbur Richerson.



Jerry Ballard
Neil Bush
Edna Byrd



Johnny Chason
Hanis Duck
Wilma Durant



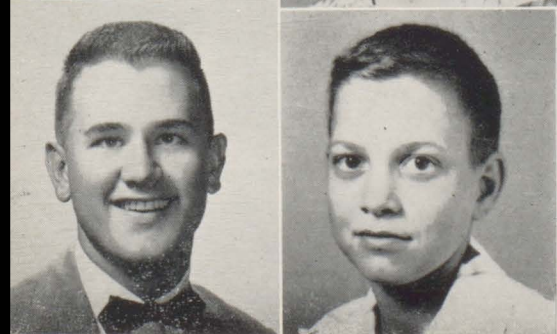
Alice Fraser
Linda Hinote
Glenda McCartha



Patsy McDuffie
Ann McMillian
Dorothy Peterson



Jyon Corbett
David Chesnutt
Atilla Daniels



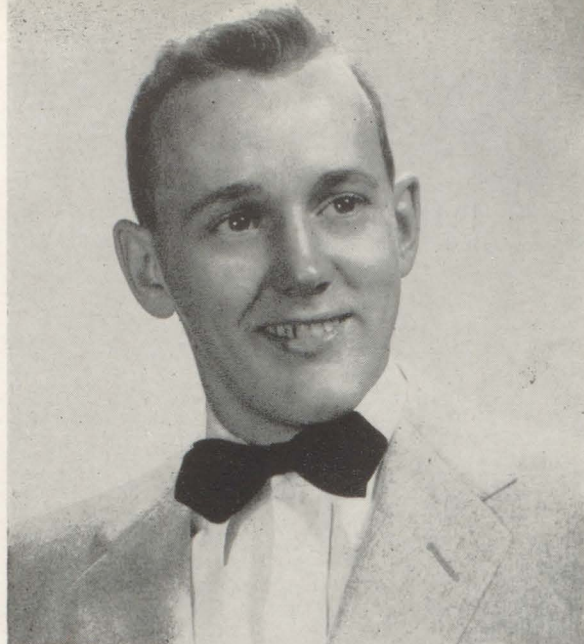
Steve Sibley
Tommy Strickland

FROM THE EDITOR

This is your 1955 Annual. It has been my job to see that the work for this book was done. I was warned that this job was a difficult one and much work was required to complete it. As I was warned, it has been a long hard climb, but I have had a faithful and hard working group of people helping me give you an annual for this year.

I would like to express my sincerest thanks to each person who has contributed to this annual. To name each person who has helped would be impossible. Most of you, the students of Baldwin County High, have directly or indirectly given us your help. Now it is yours to enjoy.

My staff was an efficient group who took their tasks seriously and completed them quickly. Martha Earle, my assistant editor, has been a patient and dilligent worker who has done more than her share toward the completion of this publication. Jerry Barnes and Charley Aylin have very abely handled the business end of this book. They have also put in much time in the laying out and putting together of the material for our annual. Ruth Lambert and her sales staff were "super salesmen" and deserve much credit for their work. Bob Reid snapped the many photographs which really make an annual enjoyable. Wilbur Richerson has given us an outstanding athletic section. Ann Zehner contributed the literary work, which is so necessary to this book. To each of these people and to the many other people who helped I would like to say a sincere "Thank You".



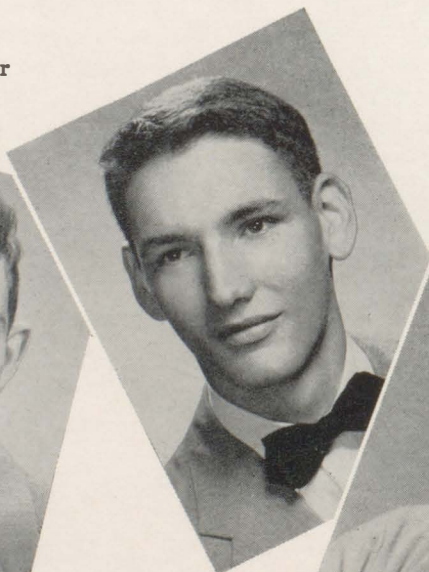
John McDuffie
Editor-In-Chief

Aside from the staff of this annual, there have been many who gave invaluable aid. Many thanks goes to Mr. O. P. Dix, Mr. S. Blake McNeely, and Mr. Basil McNeely who have done such an excellent job of printing and engraving for this book. They were a great help to us. Thanks should go to the Beta Club, its sponsor, Miss Nichols, and its President, Earl Stephens for all the assistance they have given. I would like also to thank Mr. and Mrs. E. M. Aylin who were so nice during the time that we used their house as a workshop. Last of all thanks must go to our advertisers. We should all try to patronize them whenever possible.

Jerry Barnes
Business Manager



Ann Zehner
Literary Editor



Charlie Aylin
Asst. Business Mgr.



Ann Reid
Asst. Literary Editor



From The Staff

It is usually customary for the Assistant Editor, Business Manager, or some member of the Staff to write an editorial to go along with that of the Editor. This year, as you will note, this editorial comes from the Staff.

The Staff is very sorry that this annual was a bit late in getting to you. We have done our best to bring you a good book. We hope that you like it.

The Staff would like to pay tribute to John McDuffie, our Editor. John was a very efficient Editor to work under, and the members of the Staff who will work on the 1956 Balcola feel that they have learned much from him that will help them in producing next years annual. We commend him again for his patient leadership and hours of work.

We would like to thank Mr. Daniels, our Principal and ever present friend, for his most understanding help.

Thanks to Mrs. Nealy, (our "without which we aren't") for many favors.

There's an old saying that you don't miss what you have until its gone. That's our Miss Nichols. Thanks, Miss Nichols, for all your advice and help.

We would like to acknowledge the help given us in photography and layouts by Morgan Little, a past editor of Balcola.

Thanks to Gulf States Engraving Company, Powers Printing Company and Mr. Harry Raske for their patient cooperation.

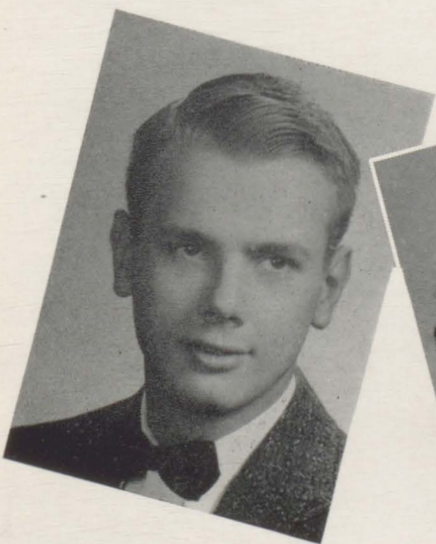


MARTHA EARLE
Assistant Editor

And last, let us not forget to express our appreciation to those students, who were not members of the Staff, who gave of their time and efforts and who contributed much toward the completion of this annual.

AND NOW TO YOU—THE 1955 BALCOLA

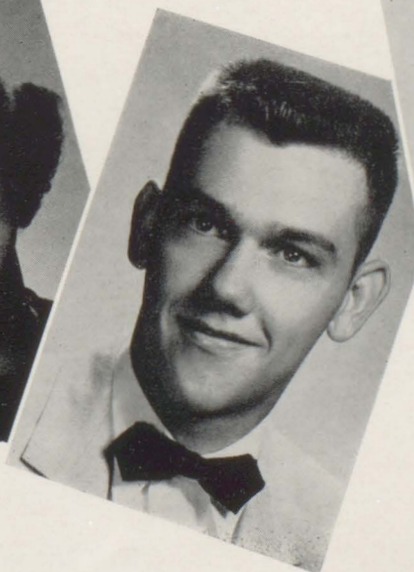
BOB REID
Photographer



RUTH LAMBERT
Sales Manager



WILBUR RICHERTSON
Sports Ed.



EARL STEPHENS
Advertising Manager



SCIENCE CLUB

The Science Club at B.C.H.S. started well this year. The first business was the election of officers with Neil Bush elected as President of the local club. After the many wonderful events at the 1955 Science Convention the local club was full of spirit and ready to start work in 1956. The local club picked up another honor as the State Science Club has as its secretary Margaret Holmes from Stockton.

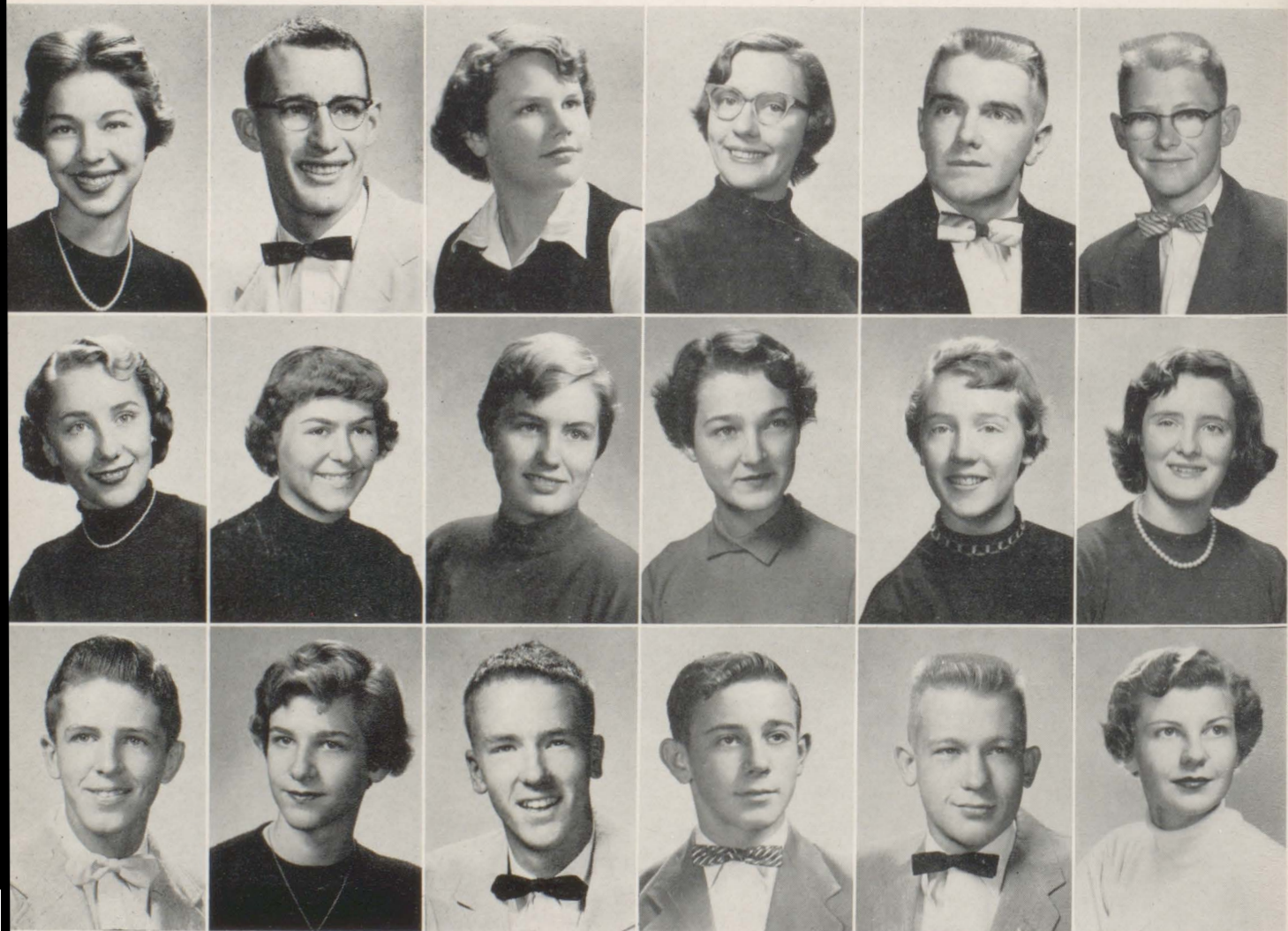
The whole Science Club took a tour of the WALA-TV receiving station. The trip proved to

be very interesting and much about television was learned. The club toured the station and was shown the towering antenna.

At the close of the year all of the science students had an exhibit in the library. As evidenced by these regional projects and research themes the students progressed well in their studies of science.

Everyone is looking forward to Science Convention in 1956. Baldwin High should be right up there again.

Pat Bell	Don Boan	Toni Bodden	Anna Brannon	Neil Bush	Ned Durant
Martha Earle	Myrtle Lou Eddins	Jo Ann Hoffman	Margaret Holmes	Betty Jo Heaton	Vermelle McDill
Earnest Miller	Hope Neely	Julian Scott	Jimmy Smith	Ben Willis	Ann Zehner



SCIENCE CLUB



Above:

Science Clubbers enjoy a day at Miss Leonard's cabin.

Left:

Science club sponsor Miss Lillian Leonard.

Below:

More "partying" at Orange Beach.



AT PLAY





Wallace Weekley
Camera Club President

CAMERA CLUB

The Camera Club, under the supervision of Miss Lillian Leonard, was once again an active club. This group of budding "shutterbugs" had a good time learning the inside story of cameras and photography.

They, at different times during the year, would bring their "brownies" to school and "shoot" away. They studied the different phases of indoor and outdoor photography.

They were served very capably during the year by their officers: Wallace Weekly, Presi-

dent; Myrtle Lou Eddins, Vice President; Anna C. Brannan, Secretary; and Ned Durant, Treasurer.

One of the outstandings services done by this club was presenting a display of prize winning photographs. These were left on display in the lab for several days.

Someday the great photographers of the nation may come from this club—the Camera Club of Baldwin County High School.



Pat Bell
Ned Durant
Ruth Lambert

Jayne Bolon
Wilma Durant
Ileen Lee

Anna C. Brannon
Myrtle Lou Eddins
Joyce Smithart

Clyde Byrne
Nancy Friel
Irma Steedley

Mildred Durant
Pearl Godwin
Moonyene Stokley

Nancy Durant
Louise Howell
Bobby Trawick

Harry Raske shows club member how
to "shoot" formal portraits.



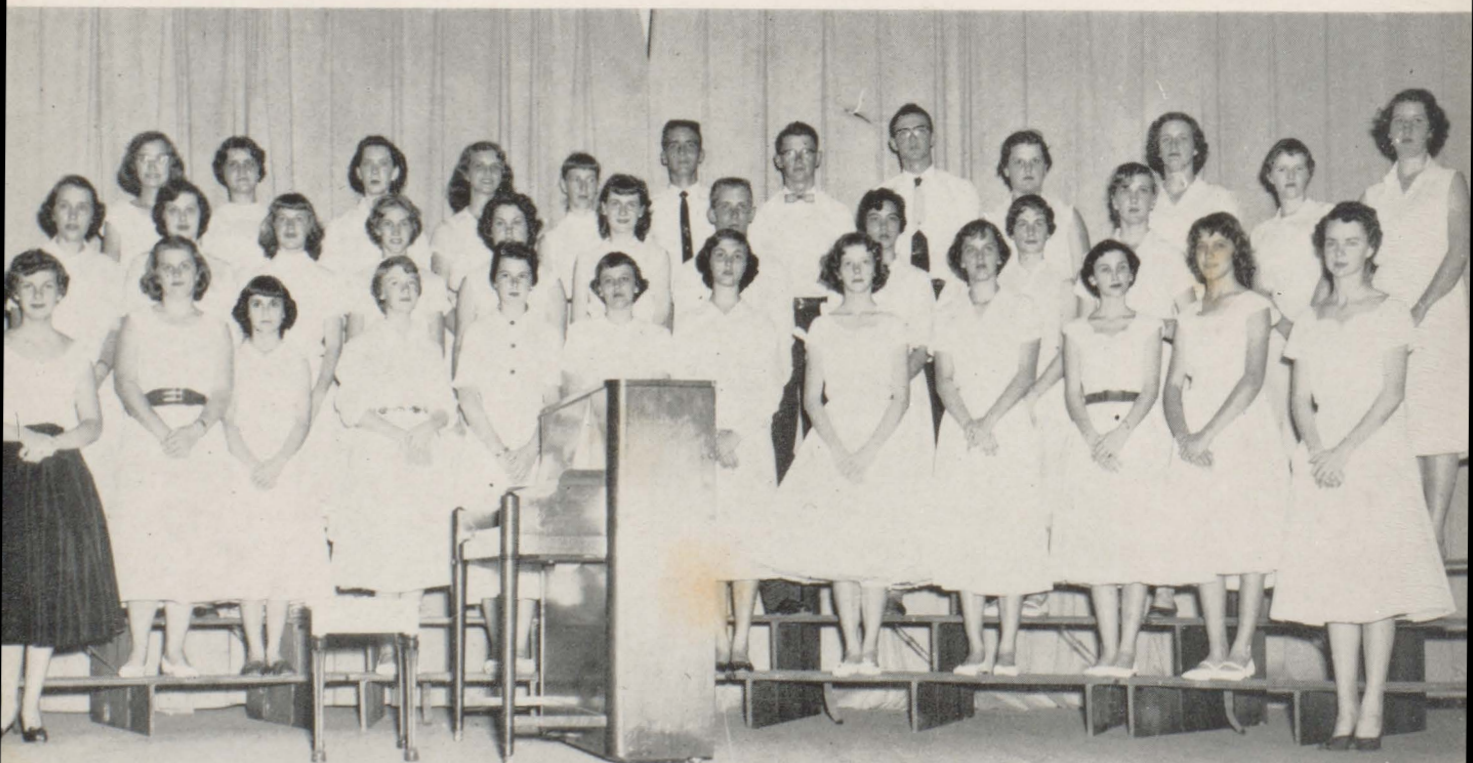


JUNIOR HIGH GIRL'S CHORUS

First Row—Left to Right—Sharon Richerson, Penelope Miller, Glenda Mae Cartha, Edna Grace Byrd, Merle Auron, Marian Wurst, Ercel Friel, Sharon Langham, Jo Ann Tolbert, Patrica Cabiness, Sarah Daniels, Dorothy Corley. Second Row—Maxine McDill, Cecilia Norsworthy, Alice Cox, Marie Ikner, Donna Duck, Nobie Cooper, Peggy Day, Jean Gray, Margaret Feulner, Pat Page, Margot Waldrop, Jane Turner. Third Row—Lorraine Owens, Sara Huggins, Carol Culver, Delores Bryars, Francis Heaton, Louise Murphy, Marilyn Seay, Lottie Simpson, Bonnie Faye Peavy, Imogene Clark, Doris White, Julia Bristow, Georgia Oakes, Carol Bagget, Jackie Brannon, Georgia Mae Wilson, Carolyn Dean, Ann Stuart. Fourth Row—Nellie Catretts, Delores Coleman, Audrey Chandler, Faye Syndale, Lucille Jerkins, Patricia Fergerson, Doris Smith, Carol Perkins, Doris Vinson, Jenita West, Pat Rider, Ina Patterson, Barbara Wood, Maxine Stuart, Carolyn Seay, Judy Lambert, Pat Presley, Olivia Joiner, Lillian Stuart.

SENIOR HIGH MIXED CHORUS

Back Row—Left to Right—Christiana Taylor, Erma Dean Duck, Ina Sanders, Lunelle Duck, Elizabeth Postma, David Lindsey, Ned Durant, George Boan, Toni Bodden, Ruth Lambert, Patsy Catrett. Row Two—Betty Wiggins, D. Brown, Winnie Quinley, Peggy Trawick, Vivian Schram, Pauline Eubanks, Wayne Post, Pat Bell, Jayne Bolon, Patsy McDuffie, Jane Ballard. Row Three—Ann Zehner, June Williams, Nyla Duck, Betty Jo Heaton, Wilodean Robinson, Mary Clark, Shirley Caprara, Wilma Durant, Jean Reid, Emily Weldon, Drucella Rider, Miss Riley.



Glee Club

The Senior and Junior Glee Clubs put in a lot of hard work this year under the direction of Miss Gwen Riley. The Junior Glee Club was made up entirely of girls while the Senior Glee Club was a mixed chorus. Two days a week the Acapella Choir met. This group was made up of pupils interested in acapella work and more serious music.

As evidenced by the excellent performance of the Junior and Senior Glee Club, much hard work went into the practices for the Christmas

concert. After the presentation of the Christmas concert, the music festival was next on the agenda. The festival was held in Bay Minette this year with glee clubs from all over the area entering.

The Junior Club took a prominent part in the Spring Concert. The acapella choir was also outstanding in this event. The senior really put on a good program knowing it would be their last and the juniors were looking forward to joining the senior glee club for next year's programs.

ACAPPELLA CHOIR

First Row—Left to Right—Betty Jo Heaton, Shirley Caprara, Jean Reid, Wilma Durant, Emily Weldon, Miss Gwen Riley. Second Row—Pat Bell, Pauline Eubanks, Winnie Quinley, Mary Clark, Jane Bolan. Third Row—Chris Taylor, Erma Dean Duck, Ned Durant, David Lindsey, Lunell Duck, Ruth Lambert.



BETA

National Honor

CLUB

Beta Sponsor—Miss Gladys Nichols

Beta's "lead by serving others!" Truly the Baldwin County High Beta Club has exerted its best effort to uphold such a noble motto. Through their activities better characters were molded, leadership developed, and achievement inspired.

Under the guidance of Miss Gladys Nichols and through the support of the county association Jerry Barnes was elected state president of Beta Clubs. The entire county displayed their complete faith in Charley Aylin by electing him President of the Baldwin County Beta Association. Other members to hold a position

on the county Association Council were Emily Weldon, Secretary and Johnny Chason, Treasurer.

The year presented a well-rounded program of business, social gatherings, and other types of entertainment for Beta members and "on lookers" as well. An example of such was a play, "Finders Creepers," with an all Beta cast. Also Beta sponsored several Key functions such as the May Queen, Who's Who, and Mr. and Mrs. B.C.H.S.

Truly our Beta's have done well in "Leading By Serving Others."

Scene from Beta Play

Unloading at Convention

Charlie Aylin
Toni Bodden
Joyce Ballard
Jerry Barnes
Jayne Bolon
Johnny Chason



Anne Chamberless
Shirley Caprara
Roslyn Dyess
George Day
Nancy Durant
Lunell Duck



Myrtle Lou Eddins
Martha Earle
Carolyn Eubanks
Alice Fraser
Nancy Friel
Mary Lou Griffin



Dorothy Harris
Pearl Godwin
Robert Harrel
Betty Jo Heaton
Carroll Head
Margaret Holmes



Nora Lee Johnson
Ruth Lambert
Betty Langham
Ann McMillian
Vermelle McDill
Sylvia Mosley



Wayne Post
Barbara Powell
Emogene Quinley
Anne Reid
Mattie Jean Strickland
Evie Stewart



Moonyene Stokley
Steve Sibley
Earl Stephens
Melba Trawick
Peggy Trawick
Billy Walker



Jeannette Yarbrough
Ann Zehner



Local Officers: Charlie Aylin, Treasurer; Ann McMillian, Rec. Secretary; Miss Gladys Nichols, Sponsor; Ann Zehner, Corr. Secretary; Jerry Barnes, Vice President; Earl Stephens, President.

County Beta Ass'n. Local representatives: Charlie Aylin, President; John Chason, Treasurer; Emily Weldon, Secretary.





D. O. students dress up for their annual Employer -Employee Banquet. The banquet, being one of the highlites of the year's activities, was one of the most beautiful to take place in the cafeteria.

D. O. CLUB

The D. O. Club is for students enrolled in the Diversified Occupations course under Mr. Adolphus Jones. In this course, half of the students work is in the classroom where he studies literature relative to his work while half is actual on-the-job practice in local business establishments.

One of the highlites of the club's activities was the Employer-Employee Banquet, which was held in the school cafeteria. At the banquet the Mr. and Miss D. O. Contest took place with J. D. Peterson and Gloria Hart winning. Gloria went on to win second place in the district contest, and from there competed in the state contest.

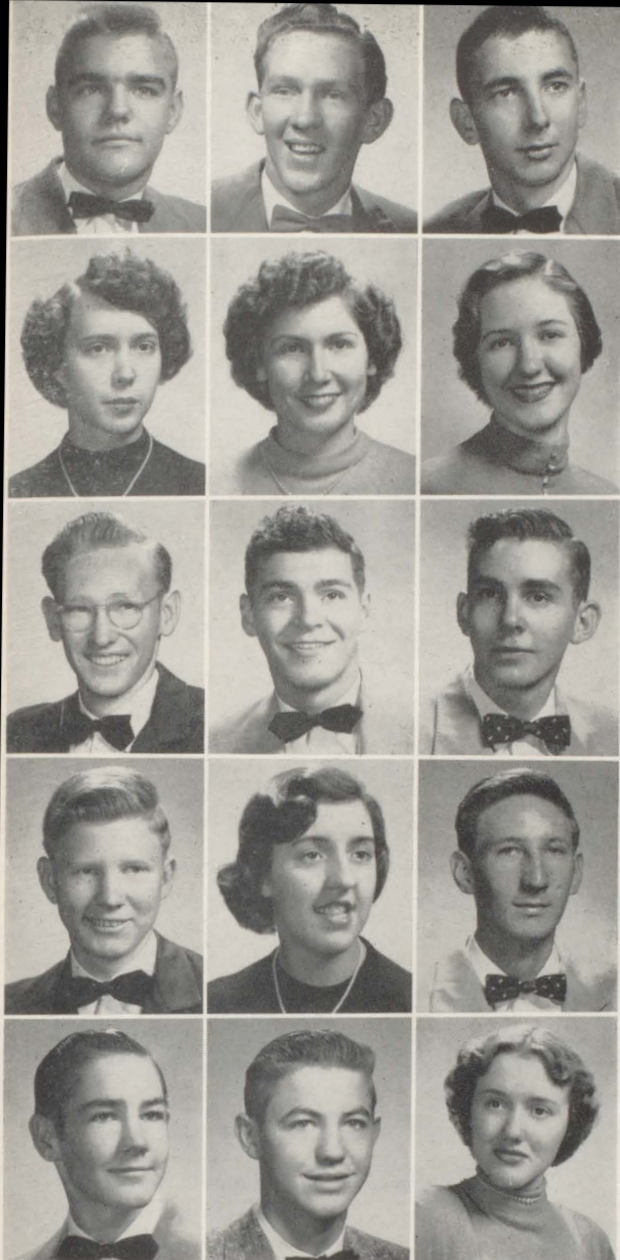
All of the D. O. students attended the District D. O. Convention in Livingston and three delegates accompanied Mr. Jones to the State Convention, which was held in Tuscaloosa.

The main social event of the year was a beach party at Fairhope where the students enjoyed games, races, and a weiner roast.

In addition to their work in occupational training the D. O. students also excelled in their other studies. An example of this was evident when the senior honors were awarded. Emogene Quinley, a leading D. O. student, was awarded senior honors in English.



Shown above are the officers of the D. O. Club of 1954-55. Reading from left to right (seated): Cecil Trawick, Vice President; J. D. Peterson, President; Joan Granger, Secretary; (standing) Gloria Hart and Betty Ruth Freeman, Reporters; and Ruth Harper, Treasurer.

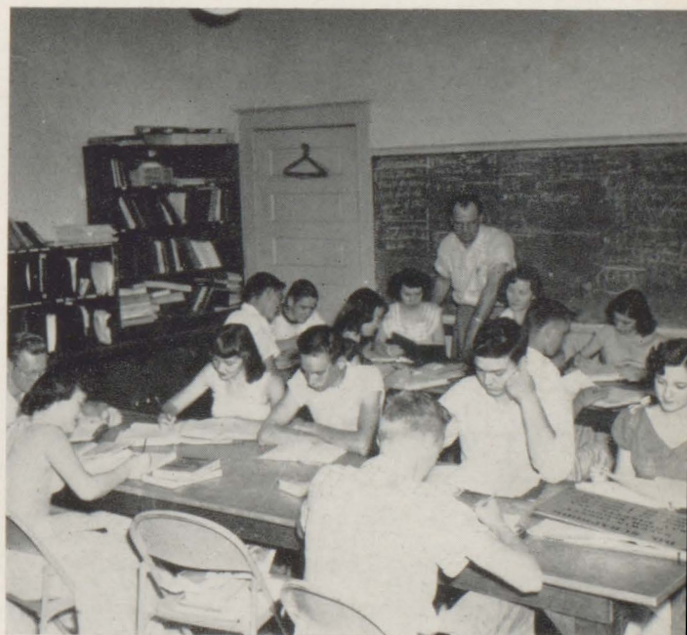


Row 1—down
 Jimmy Bell
 Joan Granger
 Leroy McKinley
 Warren Quinley
 Roy Wallace

Row 2—down
 Romeo Coleman
 Ruth Tanner
 J. D. Peterson
 Delores St. Amant
 Wallace Weekly

Row 3—down
 John Emmons
 Gloria Hart
 Jimmy Presly
 Cecil Trawick
 Jeanette Yarbrough

Dr. Culp, President of Livingston State Teachers College presents Southwestern Alabama District Miss D. O., Gloria Hart, with certificate. She enters the State Contest at University of Alabama.



Classroom work of D. O. students is different from other subjects in high school. Classes are conducted on an individual basis with each student working on job assignments related to what he does on the job.

MUSIC CLUB

The Beethoven Music Club, which is affiliated with the Mignon Music Club, is a club composed of girls who are interested in music and are taking a music course in school. Any girl is eligible if she is a member of the Glee Club, Band, or takes piano or voice lessons, and if she is interested in music. The meetings are held once a month at the home of a member. The meetings are held for the purpose of studying the lives and works of composers, and to further music appreciation. The sponsors this year were Miss Gwen Riley and Miss Phyllis Tate. Music Club was not all work and no play though. There were many parties one of these was a hay ride, which was enjoyed by all.

OFFICERS—Moonyene Stokley, Treasurer; Nancy Friel, Secretary; Martha Earle, Vice President; Ann Zehner, President.

Jane Ballard
Anna Brannon
Perl Godwin
Hope Neely

Pat Bell
Martha Earle
Ruth Lambert
Anne Reid

Toni Bodden
Alice Fraser
Vermelle McDill
Moonyene Stokley

Jayne Bolon
Nancy Friel
Patsy McDuffie
Ann Zehner





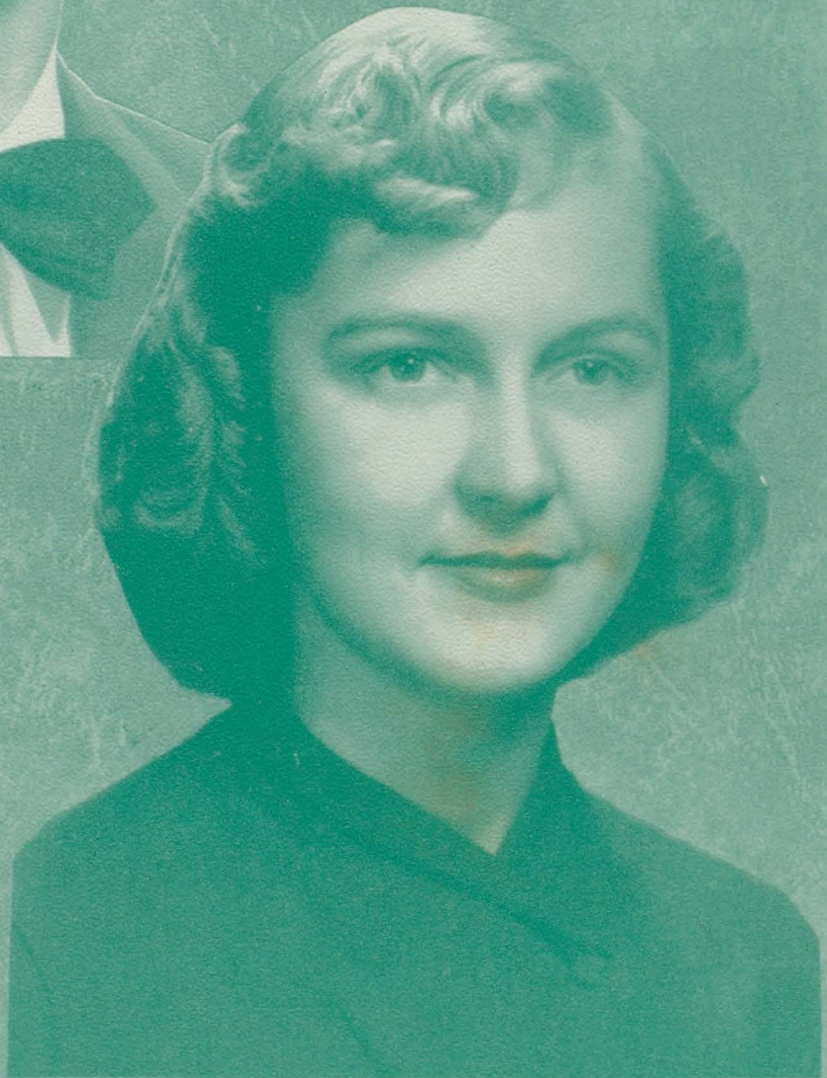
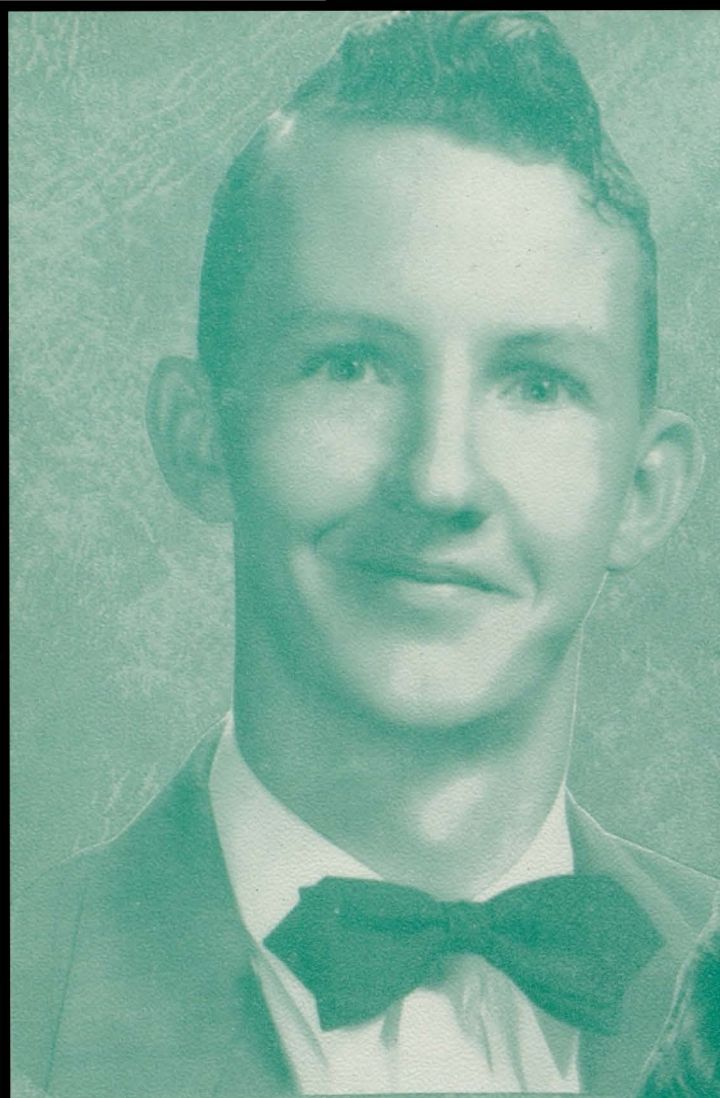
FEATURES



FEATURES

FEATURES

MR.
and
MISS



**B
G
H
S**

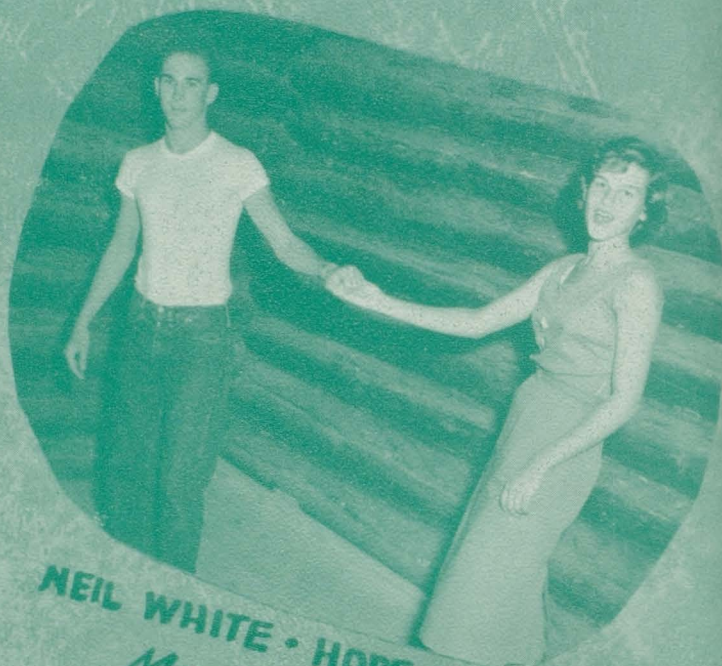
MAY QUEEN and COURT



SENIOR HIGH



DOVLY WEEKLEY • ANN ZEHNER
Best-All-Around



NEIL WHITE • HOPE NEELY
Most Talented

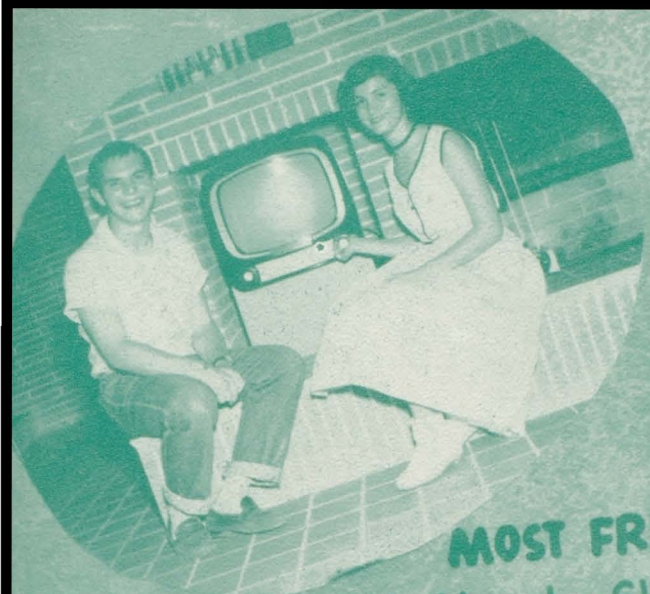
BOB REID • ANN McMILLIAN
Most Dependable



EARL STEVENS • MEBA TRAWICK
Most Likely to Succeed



WHO'S WHO



MOST FRIENDLY
Chubby Stough - Shirley Capara



CUTEST
Earnest Miller - Jean Reid



MOST POPULAR

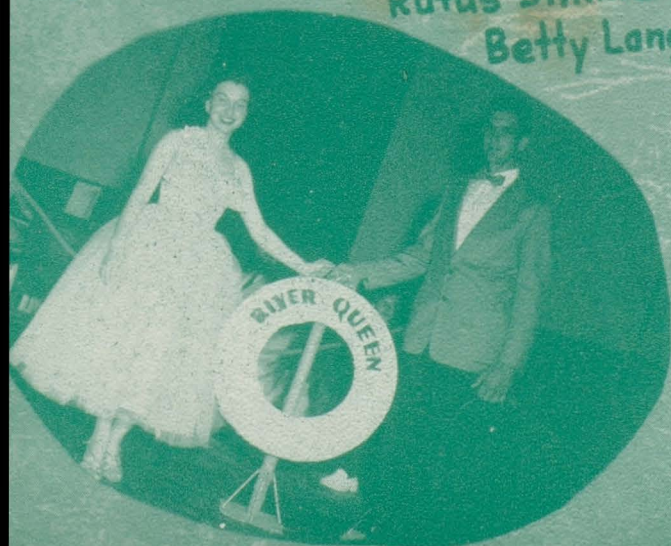
Martha Earle
John McDuffie

SENIOR HIGH

MOST ATTRACTIVE

Rufus Simms
Betty Langham

MOST ATHLETIC
Ruth Lambert - Carroll Head

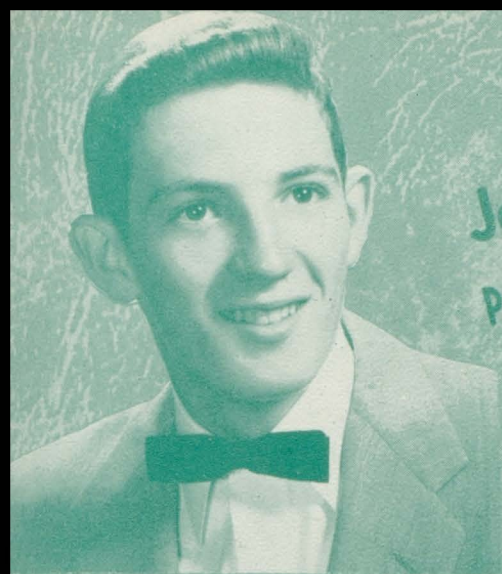




AGRICULTURE QUEEN
Shirley Capara



FOOTBALL QUEEN
Ann Zehner
Escort—George Boan



Jerry Barnes
President-State Beta Club



Martha Earle
Secretary-State Science Club



Barbara Powell
Vice-President-State F.H.A.

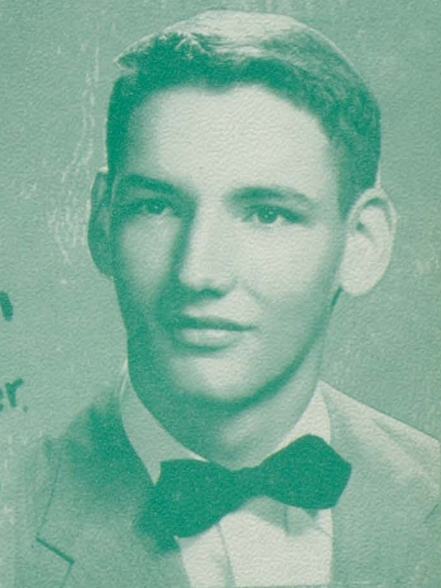


Betty Langham
Good Citizenship Girl



Margaret Holmes
Vice-President-State Science Club

Charlie Aylin
Secretary-Treasurer
Alabama District Key Club

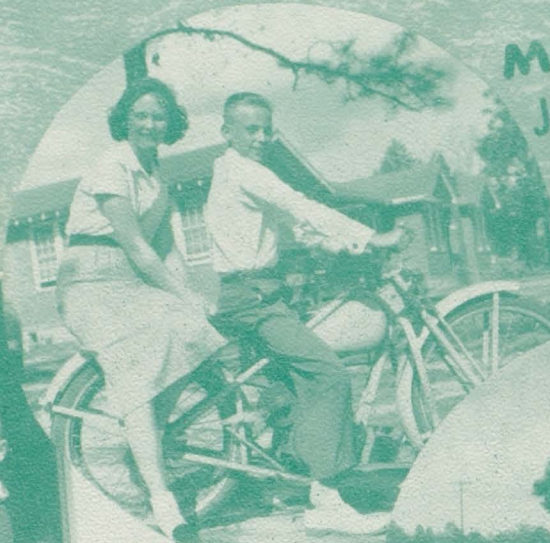


JUNIOR HIGH

MOST POPULAR
Linda Hinote - Wade Falkner

MOST ATTRACTIVE
Judy Lambert - Harry Capara

MOST ATHLETIC
Sue Martin - Sam Hill

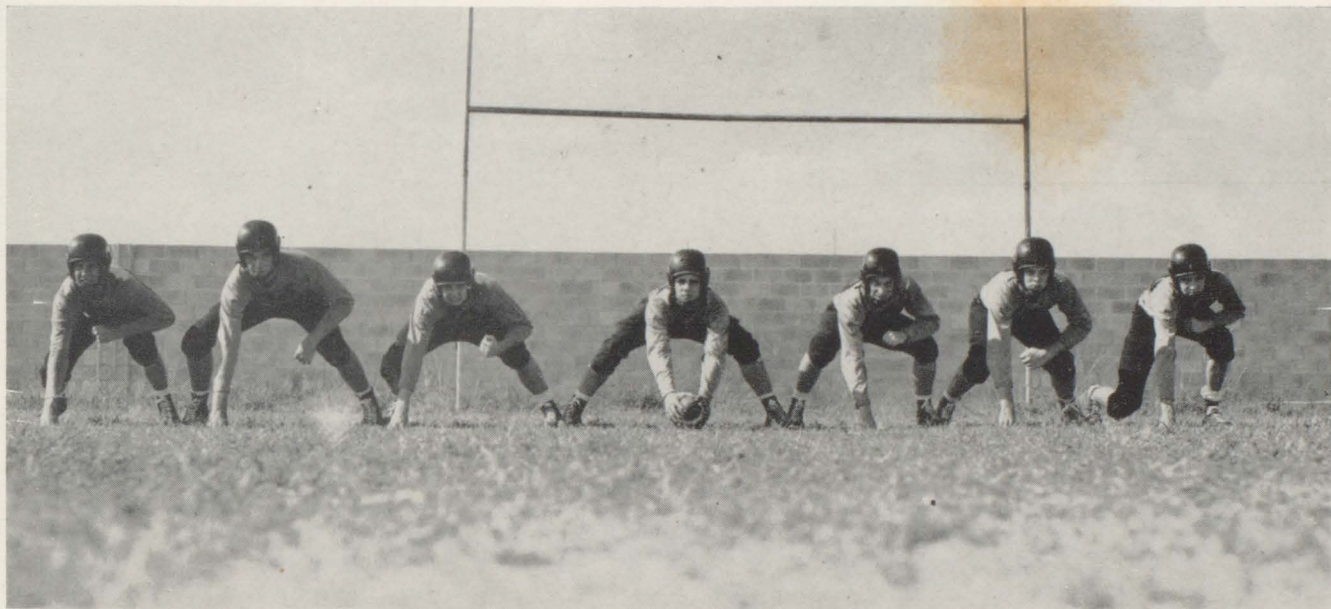


FRIENDLIEST
Glenda Nance - Jack Long

MOST TALENTED
Patricia Page - Jerry Ballard

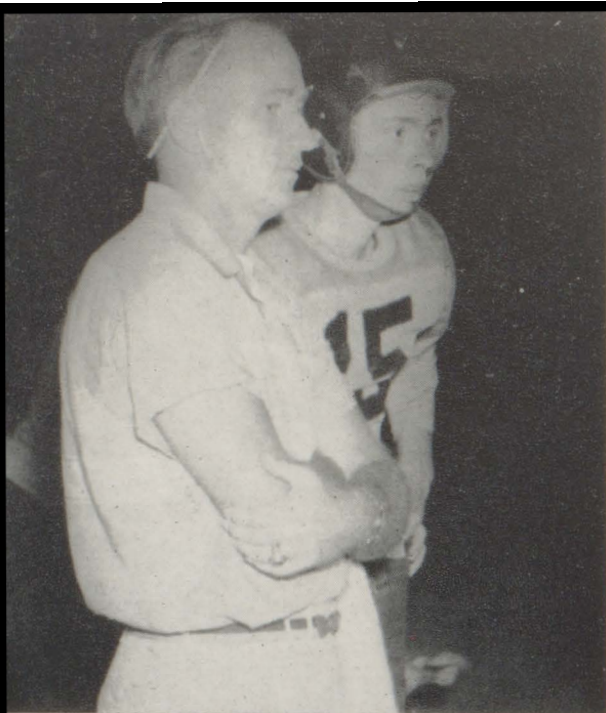
WHO'S WHO

ATHLETICS



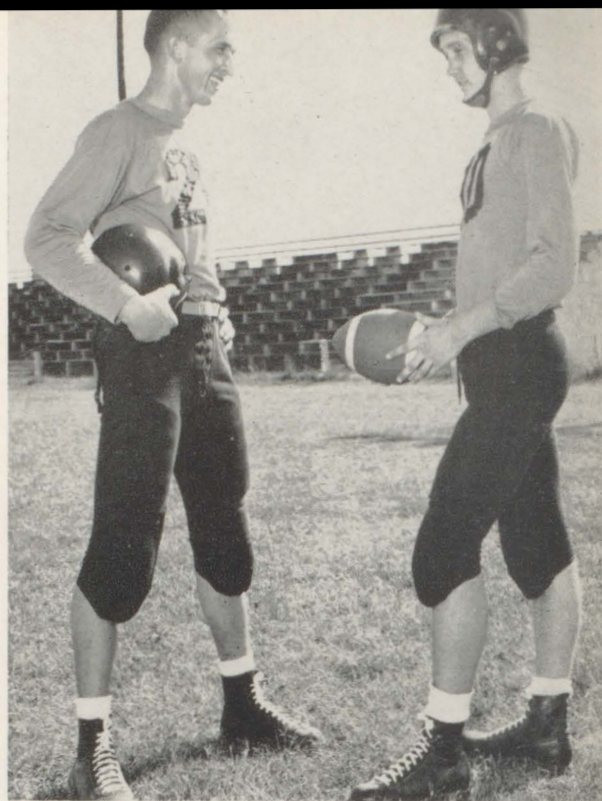
ATHLETICS

ATHLETICS



Head Coach Ed Baker

F O O T B A L L



Co-Captain Marvin Boone & Captain John McDuffie

As the football season began, Bay Minette's new coach, Ed Baker, was faced with a big problem, that of training an almost completely new squad, but with the experience of the few remaining "veterans," and the determined spirit of the complete group, the team was slowly but surely developed into a fine athletic group. The line was slightly underweight, but by the guidance of the fine line coach, Mr. W. R. "Pinky" Williams, it became an outstanding example of teamwork.

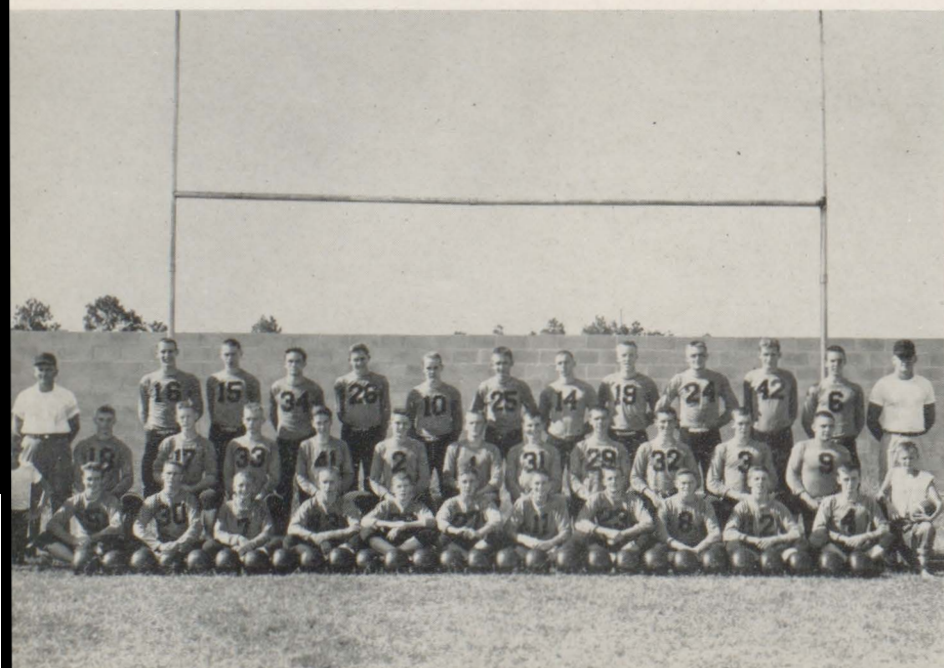
The opening game with Evergreen turned out to be a disappointment and yet a surprise. It was a disappointment in that "Dear Ole B.C.H.S." lost, but a surprise in that the higher rated Evergreen "Aggies" didn't trounce the "Tigers" as so many predicted.

The season progressed with more than our

share disheartening losses, but the fans as well as the team didn't let this worry them. The support was wonderful and the playing was good even in the games we lost. The season ended up with a bang when the B.C.H.S. Tigers held the much higher classed Atmore "Blue Devils" (our traditional rivals) to a 0 to 0 tie.

The final "box score" was 2-2-6, won, tied, and lost in that order. This record doesn't sound too good, but the experience gained and the basic elements learned by the boys will remain, will serve to strengthen our team in the future. "We learn by experience," someone has said. Certainly there were many mistakes made, but the things the future "stars" learned is a great consolation.

The outlook is good for next year. Look to the future, not the past!



B.C.H.S.	Opposition
12	Evergreen 26
13	Jackson 6
0	Fairhope 13
0	Robertsdale 13
0	U. M. S. 26
0	Miller 0
20	W. S. Neal 0
6	Foley 18
6	Frisco City 19
0	Atmore 0

B.C.H.S. vs EVERGREEN

B.C.H.S.'s opening game was at Aggie Stadium in Evergreen. The plucky Tigers surprised the "loaded" Evergreen eleven by holding them to a 26-12 score. B.C.H.S. opened its scoring with Johnny Chason, tiger center, picking up an Aggie fumble and racing 50 yards for a T.D. The Tigers final touchdown was made by Ben Willis, halfback, as he scored from five yards out. Much credit must be given to the Orange and Black line for the outstanding defensive game they played.



Hold that Tiger

B.C.H.S. 13—JACKSON 6

Billy Joe Feminear and D. C. McKinley led the Baldwin Tigers to their first victory of the '54 season. The B.C.H.S. club defeated Jackson's Aggies by a score of 13-6.

Feminear accounted for Baldwin's first score as a climax to an 80 yard drive. Jerry Barnes added the point after touchdown. Jackson pushed across a score in the second quarter and the half ended Baldwin 7 and Jackson 6.

D. C. McKinley broke away for a 48 yard run and the Tiger's final score in the third quarter.

Outstanding line play was turned in by Tiger captain, John McDuffie.

B.C.H.S. 0—FAIRHOPE 13

The Fairhope Pirates invaded Simmons Field and took our Tigers by a 13-0 score. The Pirates led by Mike Ponder, who made both touchdowns for Fairhope, had a couple of long runs which set up both of their T.D.'s.

Henry Postma was the outstanding defensive player for the tigers.



Lose Something?

POINTS SCORED

Willis	18
Feminear	18
Chason	6
McKinley	6
Conway	6
Barnes	2
White	1
Total	57



Did He Score?

B.C.H.S. 0—U.M.S. 26

The U.M.S. Cadets handed the Tigers their fourth and worst defeat of the season. The Soldiers, led by Ollie Byrd and Sidney Phillips, laid a 26-0 licking on "Baker's Boys." Despite the score, the Tigers actually played one of their best defensive games with Postma and "Monk" Robinson being the key men. McGill and Willis were the offensive leaders for the Tigers.



Alert Managers

B.C.H.S. 0—MILLER 0

Baldwin's homecoming game with T. R. Miller of Brewton was marred by the fumbles of both teams. The Tigers lost their one opportunity to break the tie when Billy Joe Feminear fumbled in the end zone after making a brilliant 40 yard run. The encounter was a defensive show. Neither team made any outstanding offensive threat except for the run mentioned above.

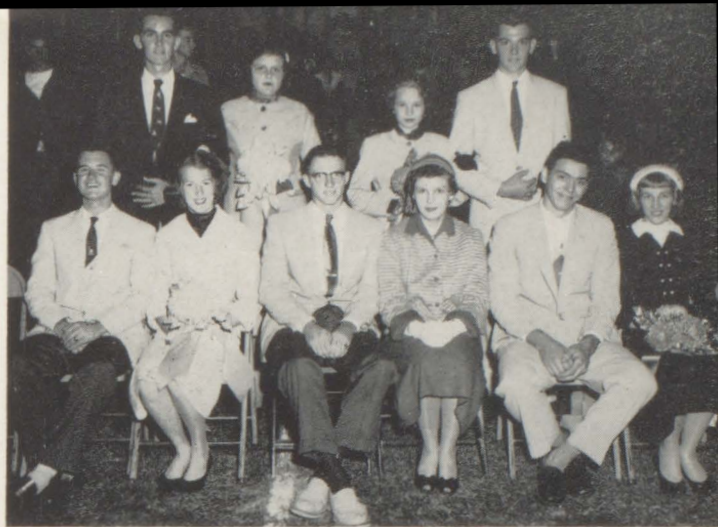


Robertsdale Stops Willis

B.C.H.S.—20 NEAL—0

The Bay Minette football team scored their second victory at the expense of W. S. Neal's Eagles.

A Neal fumble set up the first Tiger score. Autry Conway picked up the bobble and tallied. Kenneth White added the extra point. Ben Willis, taking a Neal punt, raced 90 yards for the second marker, behind terrific blocking. The final TD was scored by Billy Joe Feminear in the fourth quarter. Feminear found a hole in the center of the defensive line and raced 35 yards for the score. Barnes added the extra point.



Homecoming Queen and Court

B.C.H.S.—6 FOLEY—18

The Foley Lions, sensing a county championship, defeated the B.C.H.S. Tigers by an 18-6 count. The Tigers' only touchdown was set up by a 35 yard Postma to Willis pass. Seconds later, Feminear went over for the score from about the 10 yard line. The freezing weather, causing several fumbles, hurt the Tiger's offense. Offensive standouts were Postma, Willis, and Feminear.

B.C.H.S.—6 FRISCO—19

The brilliant play of quarterback Henry Postma didn't faze the Frisco City Whippets. The Monroe County team handed the B.C.H.S. team a 19-6 loss.

Postma passed, kicked and ran well all night, but the Tigers could only push over one tally. Ben Willis scored from inside the ten yard line.

Baldwin's defense held stoutly until Frisco City found their weak spot, the ends. The Whippets scored three times to top the Tigers.

B.C.H.S.—0 ATMORE—0

Baldwin's highly inspired Tigers had their finest moments in their traditional game with their biggest rivals, Atmore. The B. C. H. S. Tigers were thirty point underdogs, but the determined team tied Atmore 0-0.

Four times the Baldwin line stopped the Blue Devils inside the Bay Minette ten yard line. Although the Tigers made no outstanding offensive threats, their defensive play was excellent.

Conway and Boan played outstanding defensive games, coupled with the entire teams' tremendous support.

This game was a fine close to the season because an upset against Atmore determines a successful campaign.



Which way is the goal post?



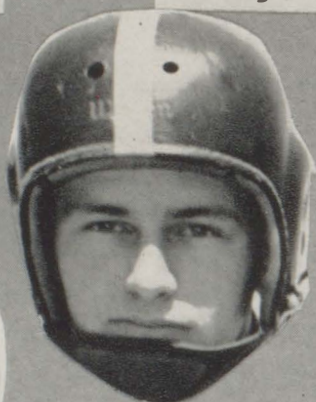
Neil White—End



George Day—Fullback



Kenneth White—End



Jimbo Berry—Halfback



Jerry Barnes—Halfback



George Robinson—Tackle



Carroll Head—Tackle



Johnny McGill—Quarterback



William Stough—Guard



John McDuffie—Guard



Autry Conway—Center



Earl Stephens—End



Billy Joe Feminear—Fullback



Bobby Taylor—End



Ben Willis—Halfback



Neil Bush—Tackle



Henry Postma—Quarterback



Donald Boan—Tackle



Marvin Boone—Guard



Johnny Chason—Center



Junior Garner—Guard



Huey Bell—Tackle



Buddy Yarbrough—Halfback



Fred Wasson—Tackle



Harold Hall—Halfback



Emory Steedly—Halfback



Jimmy Lackey—Tackle



Wayne Post—Guard



Red Wilkins—End



Charles McKinley—Center



Jimmy Smith—Halfback



Dan Windham—End



Ernest Miller—Guard



Larry Cattrett—Quarterback



Roland McNeeley—Halfback

Cheerleaders



Clockwise from Bottom—Anne Reid, Margaret Holmes, Martha Earle, Moonyene Stokley, Betty Langham, Head Cheerleader, Bob Reid, Clyde Byrne.



GO-GO-GO

BASKETBALL



Top Row—Left to Right—H. Postma, J. McGill, F. Wasson, Coach Ed Baker.

Row Two—W. Richerson, D. Boan, E. Stephens, G. Boan.



Top Row—Left to Right—B-Team—F. Powell, L. Bryars, T. Wilkins. Bottom Row—Left to Right — D. Weekley, J. Weekley, K. White.



Wasson Shoots

A-TEAM SCORES

Bay Minette

56
58
44
34
55
46
34
45
60

Opposition

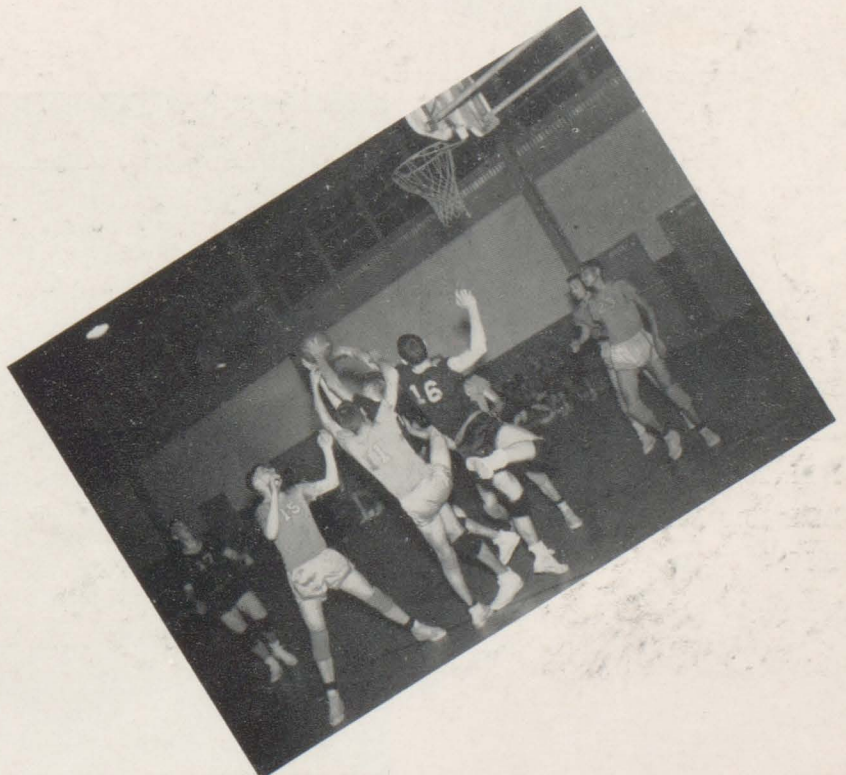
Frisco City 47
Uriah 60
Robertsdale 45
Fairhope 51
W. S. Neal 40
Fairhope 58
Frisco City 40
Robertsdale 44
W. S. Neal 47

TOURNAMENT

Bay Minette 36

W. S. Neal 40

Mad Scramble





Did he make it?



Moment of Suspense.



Managers Strickland and Williams.

B - TEAM BASKETBALL

The "B" basketball team, just as all of our athletic teams, went into the year "green." The boys worked hard and came up with what we call a successful season.

These guys show much promise for good basketball teams in the very near future. The determined drive and everlasting spirit exhibited by these boys will stay with them as they play more ball for 'ol B.C.H.S.

The squad, as mentioned, learned a lot, played a lot and will undoubtedly be a much more polished and improved club next year.

Want to play with us No. 12?

B-TEAM SCORES

B.M. 33	Uriah 30
B.M. 26	Fairhope 23
B.M. 26	W. S. Neal 49
B.M. 15	Frisco City 33
B.M. 31	W. S. Neal 37



JUNIOR BASKETBALL

The 1955 Junior Basketball team at B.C.H.S. showed much promise for the future. Credit should be given these boys, who practice and wait patiently until they are ready to move up to the varsity. They play a vital part in the basketball organization at Baldwin High. Most boys who have made the varsity team have done so through the Junior team. Every one appreciates and enjoys the basketball played by the Junior team members.

The Junior's season was successful in the won and lost column, and their experience in sportsmanship gained was valuable. The advantages for participating in good recreation are numerous. Every boy who participates in some form of athletics is receiving experience which will be of aid to him in later life. Although their skill was not recognized as being the best, these young men play an exciting and enjoyable brand of basketball. We all should support these athletics who will someday be the varsity players at Baldwin County High School.

SCORES "A" TEAM

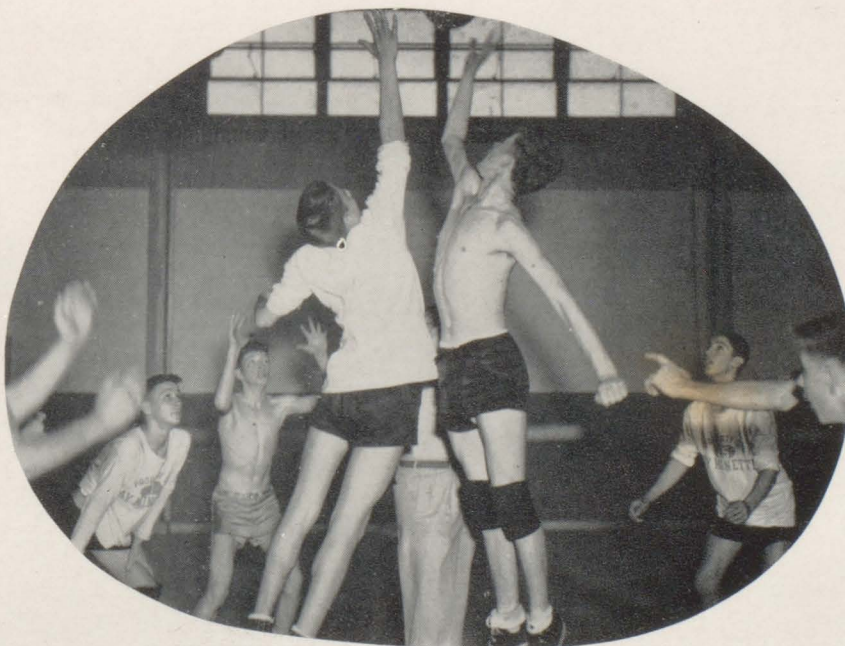
B.C.H.S.

27	Perdido 21
30	Perdido 23
28	Fairhope 16
25	Summerdale 50
47	Fairhope 22
26	Foley 57
43	Loxley 25
41	Foley 54
18	Summerdale 28

SCORES "B" TEAM

B.C.H.S.

22	Perdido 17
26	Fairhope 12
28	Fairhope 12
31	Loxley 32
20	Summerdale 27



B A S E B A L L



Left to right. First Row. Davidson, White, Strictland. Second Row. Conway, Graham, Hall, Cattratt, Day, McKinley, Hill, Berry, Lindsey, Paul, Taylor. Third Row. E. Hall, Boan, Richcerson, Garner, K. White, Scott, Willis Bush, Windham, Barnes, Coach Williams.

The Bay Minette baseball club got off to a slow start this season, but improved as the season progressed. The team Won only three games but managed to look effective even in their five losses. Coach "Pinky" Williams handled his somewhat inexperienced material well. All in all the nine played a steady brand of baseball and are to be congratulated.

Junior Garner, Sam Hill, and Emmette Hall carried the heaviest burden in the pitching

chores. Julian Scott was batting leader. Scott finished the season with a .408 batting average. Scott also edged Ben Willis for scoring honors with seven runs scored (Willis scored six runs).

Although we have mentioned a few individuals, the squad operated on a team basis. They played as a group rather than as individuals, and the boys did much to advance our national pastime.

Coach W. R. "Pinky" Williams



"Manager's, White, Davidson, Strictland, Score Keeper, Gopher Boone.



Barnes, Hall, Richerson, White, Willis, Lindsey, Day, Graham, Garner.

BASEBALL SCORES:

Bay Minette	Opposition
1	Atmore 12
6	Foley 8
3	Fairhope 12
2	Fairhope 4
9	Robertsdale 1
1	Robertsdale 5
9	Foley 8
8	Atmore 5
<hr/> 39	<hr/> 55

Hall, Hill, Bush, Willis, Garner, Cattrett, McKinley.

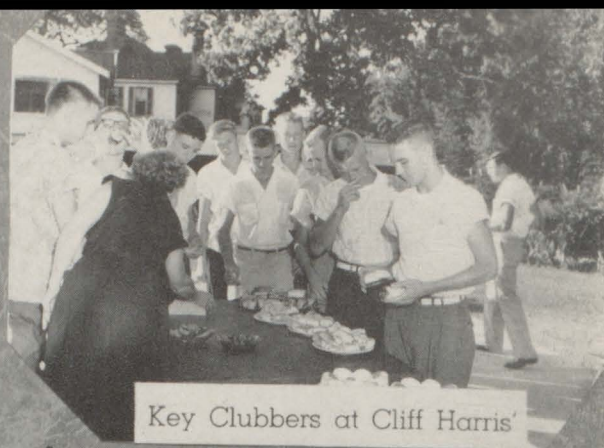
BASEBALL INDIVIDUAL SCORES

Willis	6
Scott	6
McKinley	5
Richerson	4
Hall	4
Windham	3
Taylor	3
White	2
Hill	2
Bush	2

Boan, Conway, Windham, Scott, Taylor. Bottom row Berry, Hall, Cattrett, Paul.



DA round



Key Clubbers at Cliff Harris'



More chow



Every man for himself

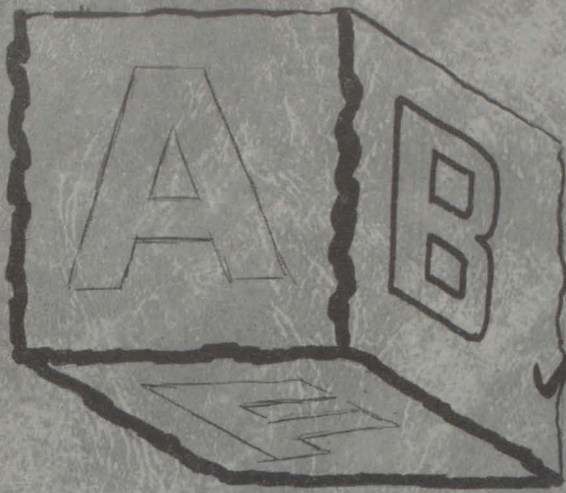


Cooks?



That mad Chow line





aldwin



Thipping Thoda thu a thaw



YOUR
WATE
AND
FATE

140?



Spiked?



"The Wild One"



Key Clubbers at play





Corn derby



The three wise men



two points coming up



The Snow



Duffie reads Last Will and Testament



Byrns Bakery



Just posing



The Lost Weekend



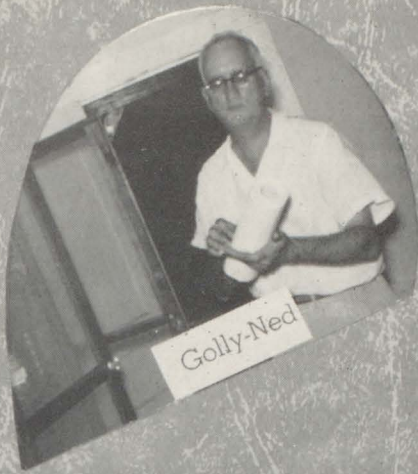
Promenade right

B

Campers



Our athletes?



Golly-Ned



"Jane Krupa"



Good to the last drop



Did he make it?



Beautiful Music?



Rah Rah Rah



Model



One is bad enough



Whose is it?



THE

everyday



Music?

Let Me Go Lover



eeeeeeek



Juniors entertain at Prom



Christmas "Spirits"



"Joe Friday" Jerkins makes a capture



"Backwards week"



Bayettes entertain



Behind the eight-ball



"Piggy Astaire"

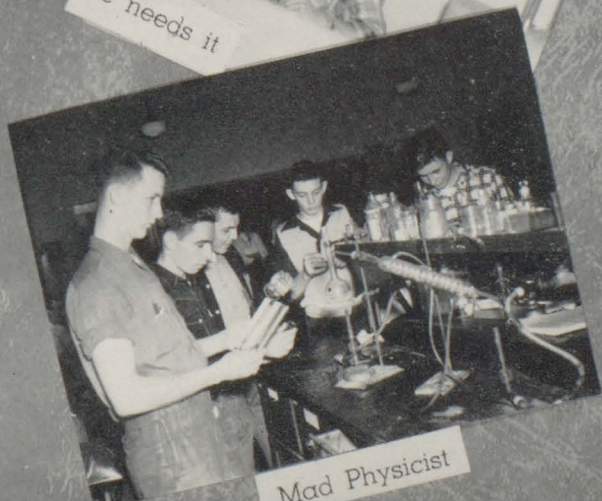


After the Christmas house party

antics



He needs it



Mad Physicist





Beauties



Informal May Queen and Court



Executive?



Don shoots one



A boy and his dog



Mother and Daughter Banquet?



What is it?



WOW!!



Bedlam



Roy, Gene, and "Hoot"



Doin' homework

May



Appointments



Prom entertainment



Happy seniors



Guy Lombago



Good morning?



Headless Horseman



Let's Dance



?????



Behind the Scenes

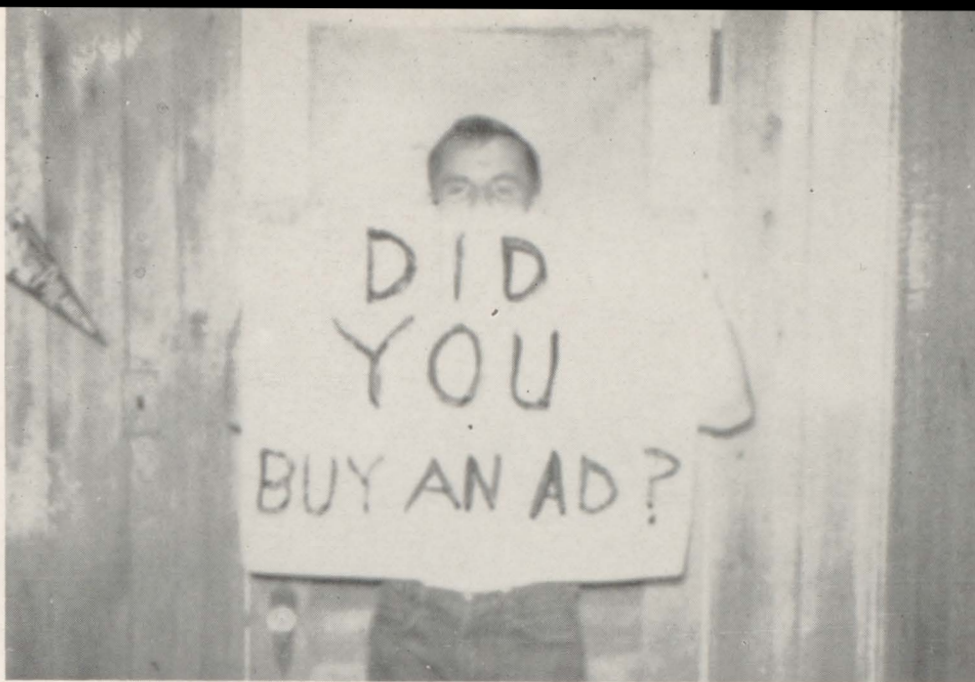
Mrs. E. M. Ogline
Donald P. Cain
Alfred (Boy Mittle into Port)
Randolph M. Kowen Jr.
William H. Fair Jr.
Billy "Red" Long
P. Grey Cane
Morgan S. Little
Buddy Prine
J. H. White
Judy McGill

A. W. P. B. A.
Road Whithy
Mr + Mrs Lowfield
E. M. Ogline

THE
1955 ANNUAL STAFF

wishes to thank

THE
ADVERTISERS
and those whose
NAMES APPEAR ABOVE
for their
Support of; and Service to
THIS BOOK



ADVERTISEMENT



ADVERTISEMENT

ADVERTISEMENT

In Mobile . . It's

Hammels

"FOR OVER 83 YEARS
MOBILE'S BEST STORE"

PHONE HE 3-3731 FOR
PERSONAL SHOPPER SERVICE

REX THEATRE

ALWAYS ANXIOUS TO PLEASE

For Fun and Recreation
SEE A MOVIE

STACEY'S DRUG STORE

WHERE THE "CROWD" MEETS
BAY MINETTE, ALABAMA

BAY MINETTE FLOWER SHOP

"FLOWERS FOR ALL OCCASIONS"

STANDARD FURNITURE MANUFACTURING COMPANY

BAY MINETTE, ALABAMA

PHONE 7480

Cox & McGowan Shoe Store

FOOTWEAR HEADQUARTERS
Star Brand — Rand — Poll Parrot
BAY MINETTE, ALABAMA

THE STOCKTON CANDY COMPANY

SERVES YOUR SCHOOL

Compliments of

BACON McMILLAN

Veneer Manufacturing Company

STOCKTON, ALABAMA

Compliments of

The Bay Manufacturing Co.

Bay Minette, Alabama

Compliments of

G. F. STEVENSON

Compliments
of

B and A

CHEVROLET

America's First Choice

For Over 23 Years

WILSON CHEVROLET CO.

COURT HOUSE SQUARE

BAY MINETTE, ALABAMA

DIAL 2611

THOSS SPORTING GOODS

MOBILE'S OLDEST SPORTING GOODS STORE

OVER 68 YEARS IN BUSINESS

Mac Gregor and Rawlings Athletic Equipment

SPOT BUILT SHOES

76 DAUPHIN STREET

PHONE HE 2-5624

The Baldwin Times

- QUALITY PRINTING
- OFFICE SUPPLIES
- OFFICE FURNITURE

Phone 2511

BAY MINETTE, ALA.

"FOR THE BEST SEAFOOD ANYWHERE"

IT'S

PALMER'S CAFE

ON THE CAUSEWAY

PHONE HE 8-9952

**BRANNAN
SPORTING
GOODS**

259 DAUPHIN STREET

MAY SUPPLY COMPANY

Distributors of

PLUMBING and HEATING SUPPLIES

PIPE — VALVES and FITTINGS

MOBILE, ALABAMA

PENSACOLA, FLORIDA

We have enjoyed our part in working on
Photographs and Engravings for the
1955 BALCOALA

GULF STATES
ENGRAVING COMPANY

H. B. CORBETT STORE

GROCERIES and FEED

BY MINETTE, ALABAMA

SERVICE DRY CLEANERS

PICK UP and DELIVERY
SERVICE

PHONE 7361

BRADLEY'S HARDWARE

HARDWARE — BUILDING SUPPLIES — PAINTS

GUNS AND FISHING TACKLE

BAY MINETTE, ALABAMA

PHONE: DIAL 7180

BUILDERS HARDWARE & SUPPLY COMPANY

HARDWARE and BUILDING SUPPLIES

Everything for Farm and Home

BAY MINETTE, ALABAMA

T H O M P S O N ' S

"Quality Clothes for Men and Boys"

WEMBLEY
HICKOK
KAYNEE
STYLEMART

BAY MINETTE, ALABAMA

ARROW
TRU-VAL
INTERWOVEN
FLORSHEIM

POWERS COMPANY, Inc.

PRINTING-OFFICE EQUIPMENT

SUPPLIES-PAPER

106 St. Michael St.

Mobile, Alabama

AZALEA BRAND

"BEST IN THE LAND"

ICE CREAM, GRADE "A" PASTEURIZED

and HOMOGENIZED MILK

DELIVERED TO YOUR

FAVORITE GROCER DAILY

**FAIRHOPE ICE &
CREAMERY CO.**

FAIRHOPE, ALABAMA

Serving the Public Since 1908

**There's a "one and only"
in refreshment, too**



BOTTLED UNDER AUTHORITY OF THE COCA-COLA COMPANY BY
Coca Cola Bottling Co., Mobile, Ala.

T. W. Mitchell

J. C. Nall

MITCHELL & NALL

GENERAL CONTRACTORS

BAY MINETTE, ALABAMA

P. O. BOX 344

PHONE 4224

MOBILE FIXTURE & EQUIPMENT CO., Inc.

24 S. WATER STREET

MOBILE, ALABAMA

PHONES HE 3-0336, HE 3-0337

Rutz Music & Piano Sales Co.

270 DAUPHIN STREET

PHONE HE 8-1583

MOBILE, ALABAMA

EVERYTHING MUSICAL

Whatever Your Needs—Automotive Wise

Depend on **HADLEY'S**

Sales—Service

DODGE-PLYMOUTH

HADLEY MOTOR CO.

Dodge "JOB RATED" Trucks

Compliments of

Gulf Lumber Company

MOBILE, ALABAMA

BEASLEY'S

First In Fine Foods

BAY MINETTE, ALABAMA

COMPLIMENTS OF

NEWPORT

INDUSTRIES

Incorporated

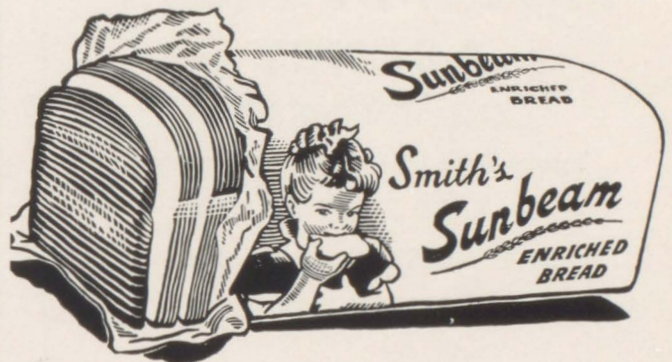
Compliments of

J. A. ERTZINGER
AND SON

Compliments of

LANGHAM'S
Lloyd & Tommy

THE BREAD YOU NEED FOR ENERGY!



LAMBERT'S DRUG STORE

Where Everyone Feels At Home

PHONE 3841

BAY MINETTE, ALABAMA

BARRON DRUG STORE

"We Are Careful Druggists"

PHONE 2821

BAY MINETTE, ALABAMA

BRISTOW DRUG STORE

Duncan Miller Crystal

Hauiland China

BAY MINETTE, ALABAMA

THE
SMART SHOP

THE SHOP OF QUALITY

BAY MINETTE, ALABAMA

Compliments of

OLEN DEPT. STORES

BAY MINETTE, ALABAMA

Compliments of

W. RAMSEY STUART

PROBATE JUDGE

**BELL INSURANCE
AGENCY**

AND REAL ESTATE

Insure With Us — We Give Service

209 EAST FIRST STREET

BAY MINETTE, ALABAMA

PHONE 7236

Compliments of

TELFAIR J. MASHBURN

Compliments of

CLY T. SMITH

S. KAHALLEY'S

Quality—Service—Courtesy

Clothing and Shoes For The Family

PHONE 4982

BAY MINETTE, ALABAMA

J. E. STILL MOTOR COMPANY

"See Your Ford Dealer"

BAY MINETTE, ALABAMA

RAY E. LOPER LUMBER CO.

YELLOW PINE LUMBER AND POLES CO.

BAY MINETTE, ALABAMA

GOOD LUCK—SENIORS

Compliments of

FIRST NATIONAL BANK OF BAY MINETTE

Baldwins "First" National Bank

MEMBER:

Federal Deposit Insurance Corporation
Federal Reserve System

Compliments of

**NOONAN'S
GULF SERVICE**

GEORGE "BOOTSIE" NOONAN

PHONE 7261

METZGER BROS.

"MOBILE'S ACCEPTED STYLE

CENTER FOR MEN"

MOBILE

PRICHARD

STUART'S CLEANERS

"WE DO IT RIGHT"

BAY MINETTE, ALABAMA

PHONE 7146

DAMRICH SHOE CO., Inc.

For Over 74 Years

**Mobile's Finest Shoe Store for
Men, Women, and Children**

205 DAUPHIN STREET
MOBILE, ALABAMA

Compliments of

J. B. BLACKBURN

Compliments of

**W. C. BEEBE
and
F. G. SWEARINGTON**

Compliments of

**JOHN CHASON
and
NORBORNE C. STONE**

Compliments of

**THE
FABRIC MART

MOBILE**

BALDWIN TIRE STORES

GOODYEAR and GENERAL ELECTRIC

BAY MINETTE and FOLEY

**KODAK SUPPLIES
WOJOHNS**

16 So. Conception
MOBILE

Developing, Printing,
and Enlarging

NEW — USED CARS

COMPLETE RADIATOR SERVICE

Authorized Willys (Jeep) Dealer

LITTLE MOTOR CO.

PHONE 7144

**BAY MINETTE, ALABAMA
PURE OIL PRODUCTS**

- *Autographs* -



AS BALCOALA GOES TO PRESS,
WE PLAN A LONG AND WELL-EARNED REST

