

**ORDINANCE 1005**  
**Sale of Unneeded Municipal Real Property**

**BE IT ORDAINED** by the City Council of the City of Bay Minette Alabama, as follows:

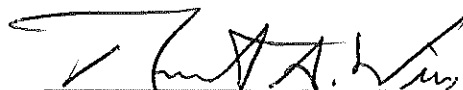
SECTION 1. It is hereby established and declared that the following described real property of the City of Bay Minette, Alabama is no longer needed for public or municipal purposes, to wit:

Site	Parcel	PPIN	Location*
1	23-04-20-1-000-008.000	000678	Dr MLK Jr Boulevard
2	23-05-16-4-000-023.000	062759	Hickory Street
3	23-05-16-4-000-020.002	203441	Hickory Street
4	23-05-16-4-000-020.000	082572	Elm Street
5	23-05-16-4-000-009.000	004948	Mango Street East
6	23-05-16-4-000-008.000	004864	Mango Street
7	23-05-16-4-000-003.001	103873	Moran Street
8	23-05-16-1-001-077.000	062867	Moran Street
9	23-05-16-1-003-017.001	112230	Elm Street
10	23-05-16-1-001-022.000	000702	Hoyle Avenue South
11	23-05-15-2-001-036.000	069247	Townsend Avenue
12	23-05-15-2-001-028.000	045742	Townsend Avenue
13	23-05-15-2-001-027.000	045719	Townsend Avenue
14	23-05-15-2-001-088.000	035787	Abernathy Avenue
15	23-05-15-2-001-087.000	035786	Abernathy Avenue
16	23-05-15-2-001-007.000	035785	Sowell Avenue
17	23-02-10-1-000-032.001	023802	County Rd 112

\*Locations are further identified on the attached maps.

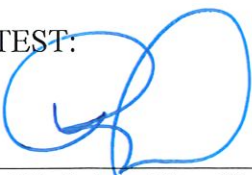
SECTION 2. That the mayor and the city clerk be, and they hereby are, authorized and directed to execute and attest, respectively, for and on behalf of the City of Bay Minette, Alabama, a deed in form as approved by the Mayor, a copy of which will be on file in the office of the city clerk, whereby the City of Bay Minette, Alabama, does convey the premises described in Section 1, hereof to the respective highest bidder via the online government surplus auction GovDeals.

Done this the 2<sup>nd</sup> Day of May 2022



Robert A. Wills, Mayor  
City of Bay Minette, Alabama

ATTEST:



---

Rita Diedtrich, City Clerk

I, the undersigned qualified and acting Clerk of the City of Bay Minette, Alabama, do hereby certify that the above and foregoing is a true copy of an Ordinance lawfully passed and adopted by the Bay Minette City Council, at a regular meeting of such council, held on the 2nd day of May 2022 and that said Ordinance is on file in the office of the Bay Minette City Clerk.

IN WITNESS WHEREOF, I have hereunto set my hand and affixed the official seal of the City of Bay Minette, on this the 2nd day of May 2022.



---

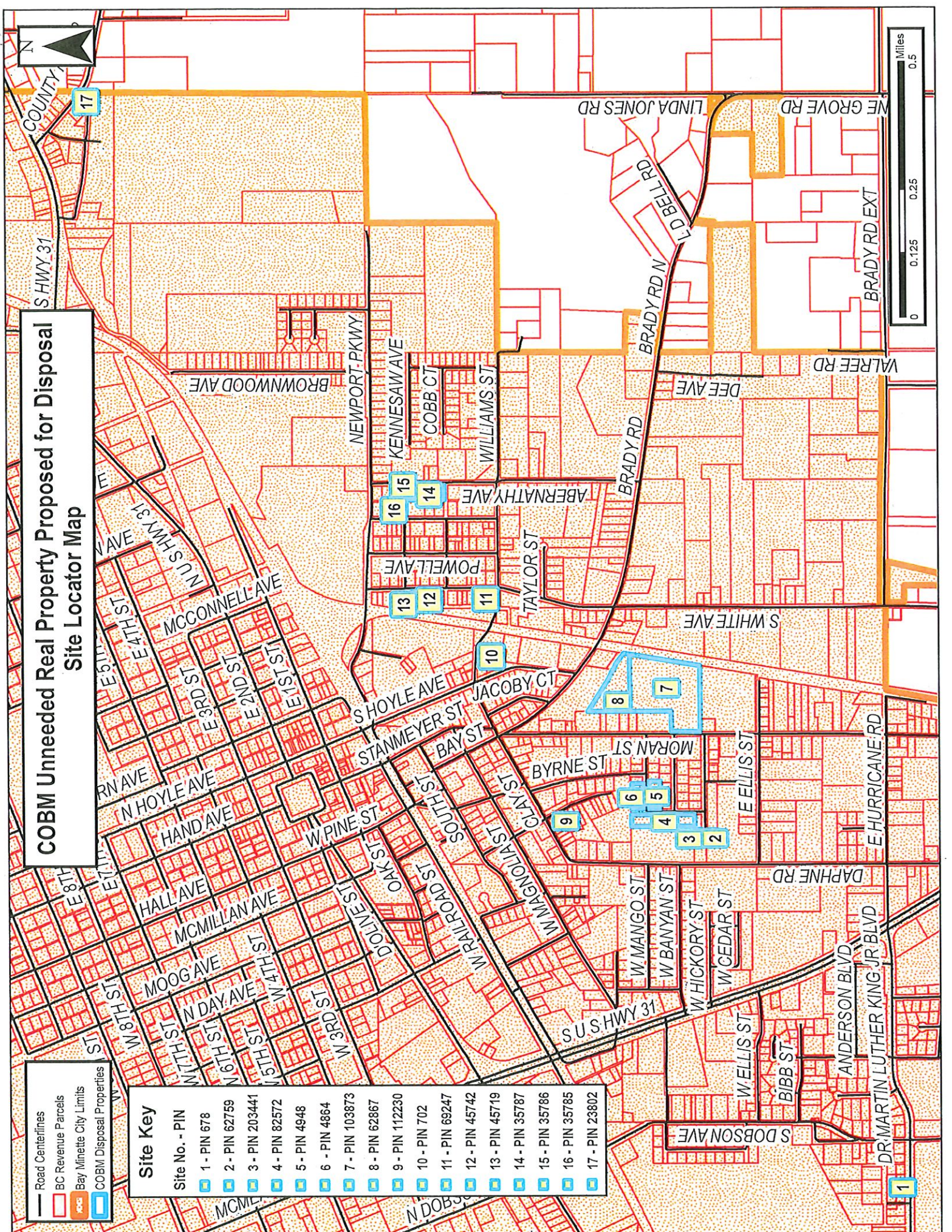
Rita Diedtrich  
City Clerk



# COBM Unneeded Real Property Proposed for Disposal Site Locator Map

- Road Centerlines
- BC Revenue Parcels
- Bay Minette City Limits
- COBM Disposal Properties

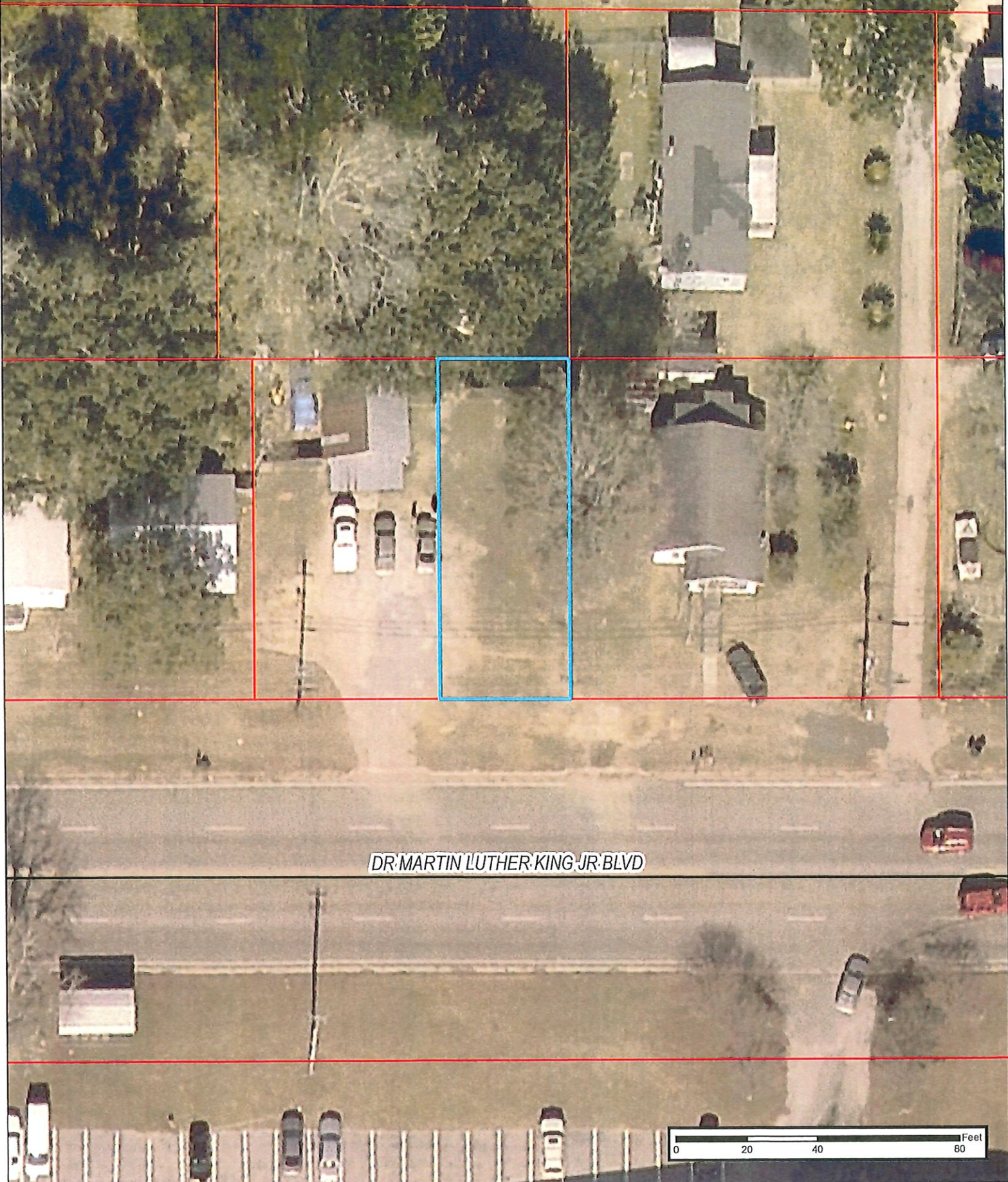
Site Key	
Site No. - PIN	
1 - PIN 678	
2 - PIN 62759	
3 - PIN 203441	
4 - PIN 82572	
5 - PIN 4948	
6 - PIN 4864	
7 - PIN 103873	
8 - PIN 62867	
9 - PIN 112230	
10 - PIN 702	
11 - PIN 69247	
12 - PIN 45742	
13 - PIN 45719	
14 - PIN 35787	
15 - PIN 35786	
16 - PIN 35785	
17 - PIN 23802	



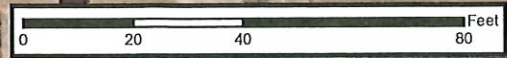


- Road Centerlines
- BC Revenue Parcels
- Bay Minette City Limits
- COBM Disposal Properties

COBM Unneeded Real Property Proposed for Disposal  
Site #1 - PIN 678



DR MARTIN LUTHER KING JR BLVD





- Road Centerlines
- BC Revenue Parcels
- Bay Minette City Limits
- COBM Disposal Properties

COBM Unneeded Real Property Proposed for Disposal  
Site #2 - PIN 62759 & Site #3 - PIN 203441

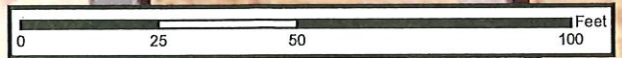


4

3

E HICKORY ST

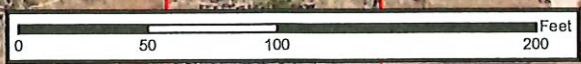
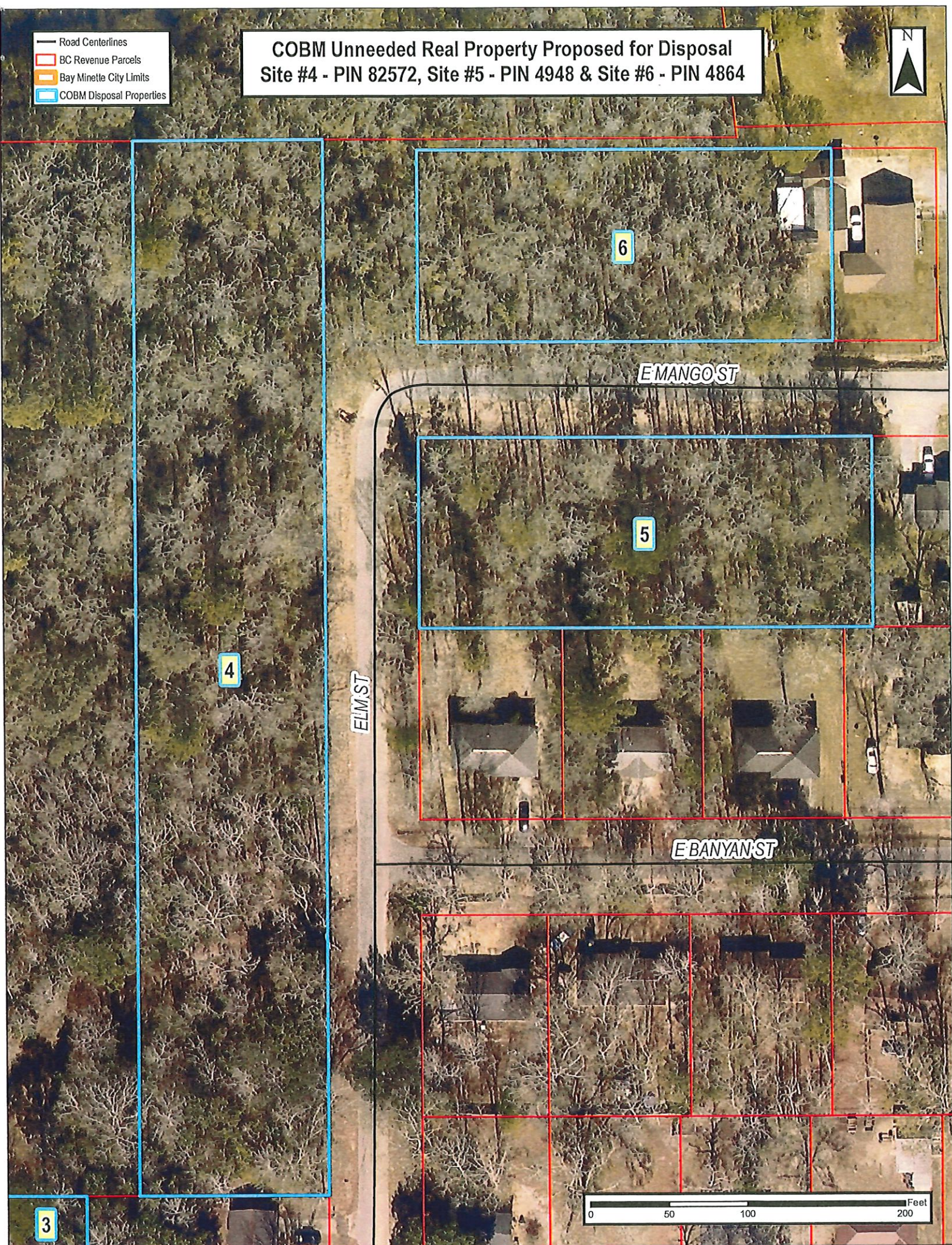
2





- Road Centerlines
- BC Revenue Parcels
- Bay Minette City Limits
- COBM Disposal Properties

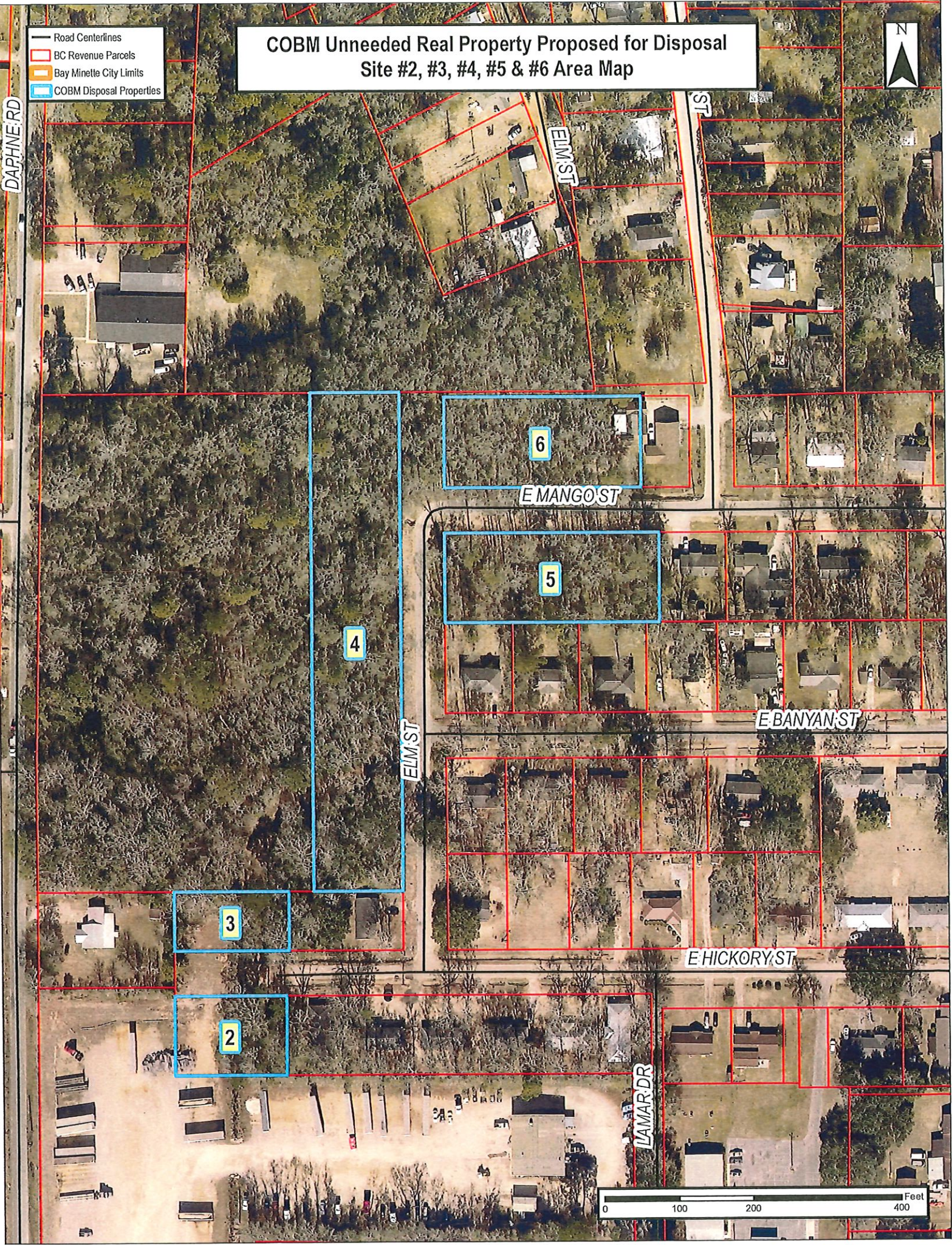
**COBM Unneeded Real Property Proposed for Disposal**  
**Site #4 - PIN 82572, Site #5 - PIN 4948 & Site #6 - PIN 4864**





**COBM Unneeded Real Property Proposed for Disposal**  
**Site #2, #3, #4, #5 & #6 Area Map**

- Road Centerlines
- BC Revenue Parcels
- Bay Minette City Limits
- COBM Disposal Properties

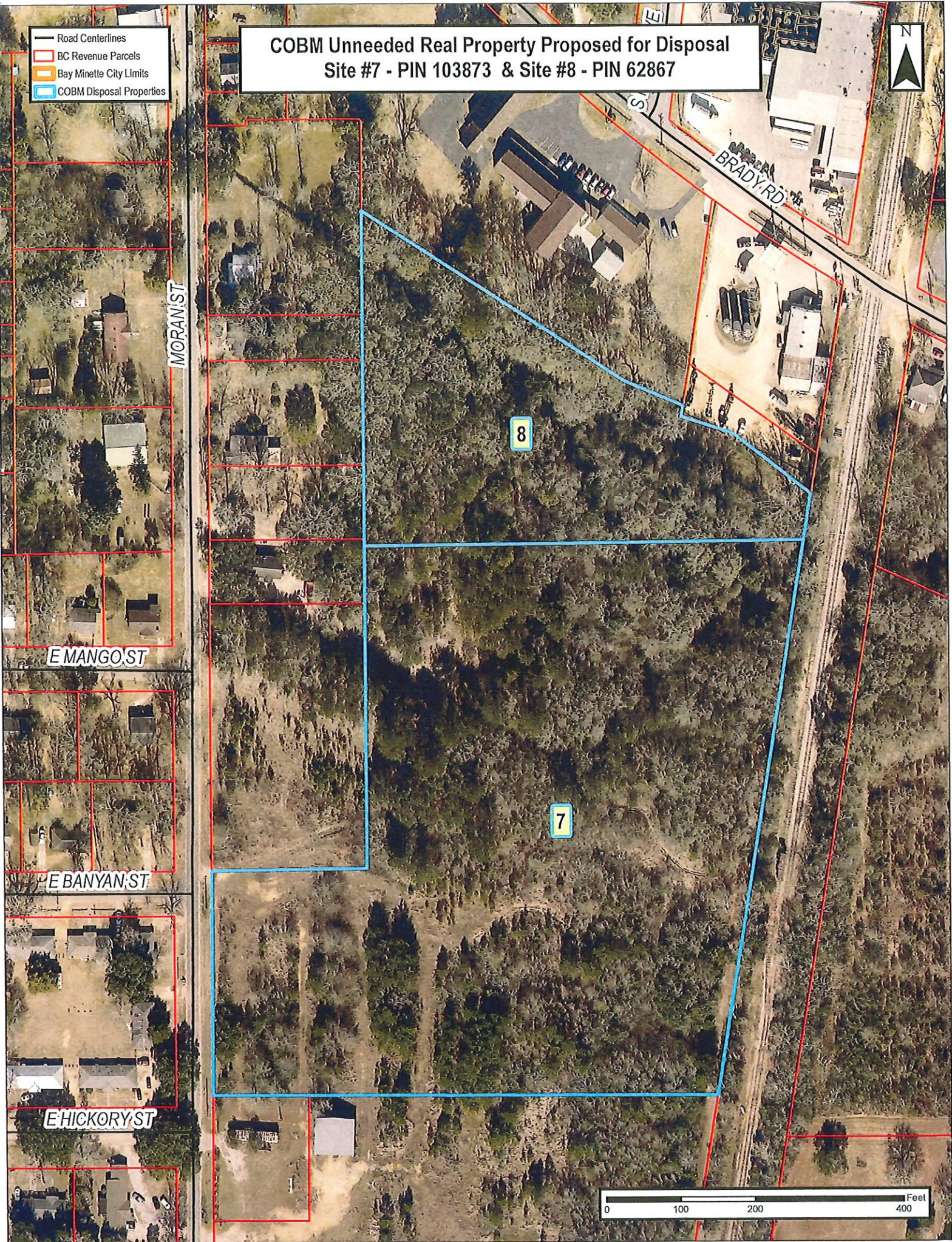


0 100 200 400 Feet



**COBM Unneeded Real Property Proposed for Disposal**  
**Site #7 - PIN 103873 & Site #8 - PIN 62867**

- Road Centerlines
- BC Revenue Parcels
- Bay Minette City Limits
- COBM Disposal Properties



0 100 200 400 Feet



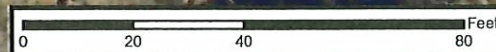
- Road Centerlines
- BC Revenue Parcels
- Bay Minette City Limits
- COBM Disposal Properties

# COBM Unneeded Real Property Proposed for Disposal Site #9 - PIN 112230



CLAY ST

ELM ST



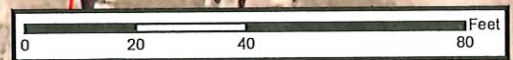


- Road Centerlines
- BC Revenue Parcels
- Bay Minette City Limits
- COBM Disposal Properties

COBM Unneeded Real Property Proposed for Disposal  
Site #10 - PIN 702



WILLIAMS ST





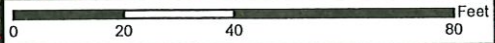
- Road Centerlines
- BC Revenue Parcels
- Bay Minette City Limits
- COBM Disposal Properties

COBM Unneeded Real Property Proposed for Disposal  
Site #11 - PIN 69247



TOWNSEND AVE

WILLIAMS ST





- Road Centerlines
- BC Revenue Parcels
- Bay Minette City Limits
- COBM Disposal Properties

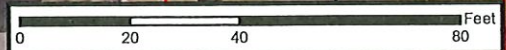
**COBM Unneeded Real Property Proposed for Disposal**  
**Site #12 - PIN 45742 & Site #13 - PIN 45719**



13

12

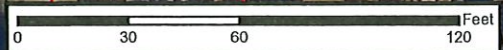
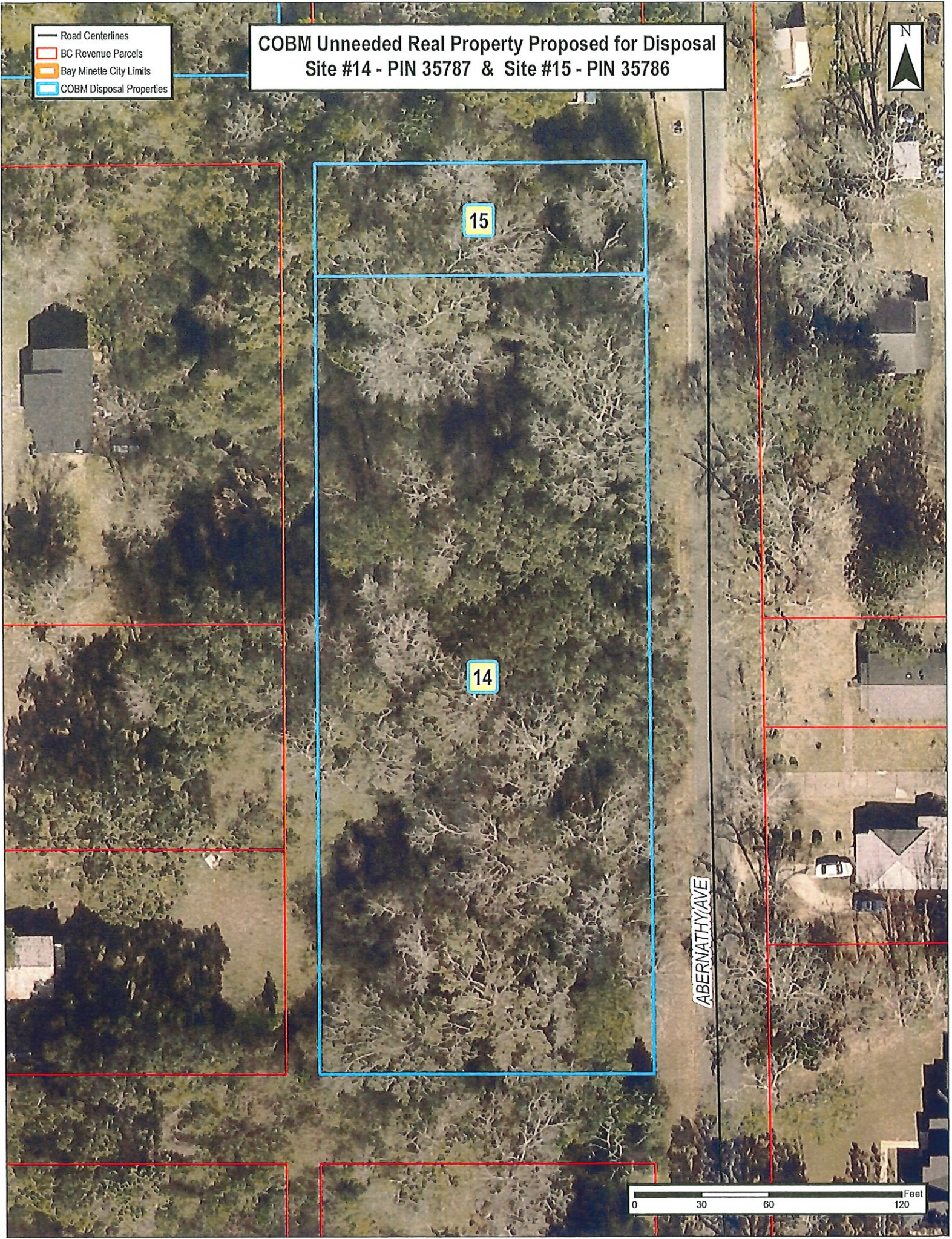
TOWNSEND AVE





- Road Centerlines
- BC Revenue Parcels
- Bay Minette City Limits
- COBM Disposal Properties

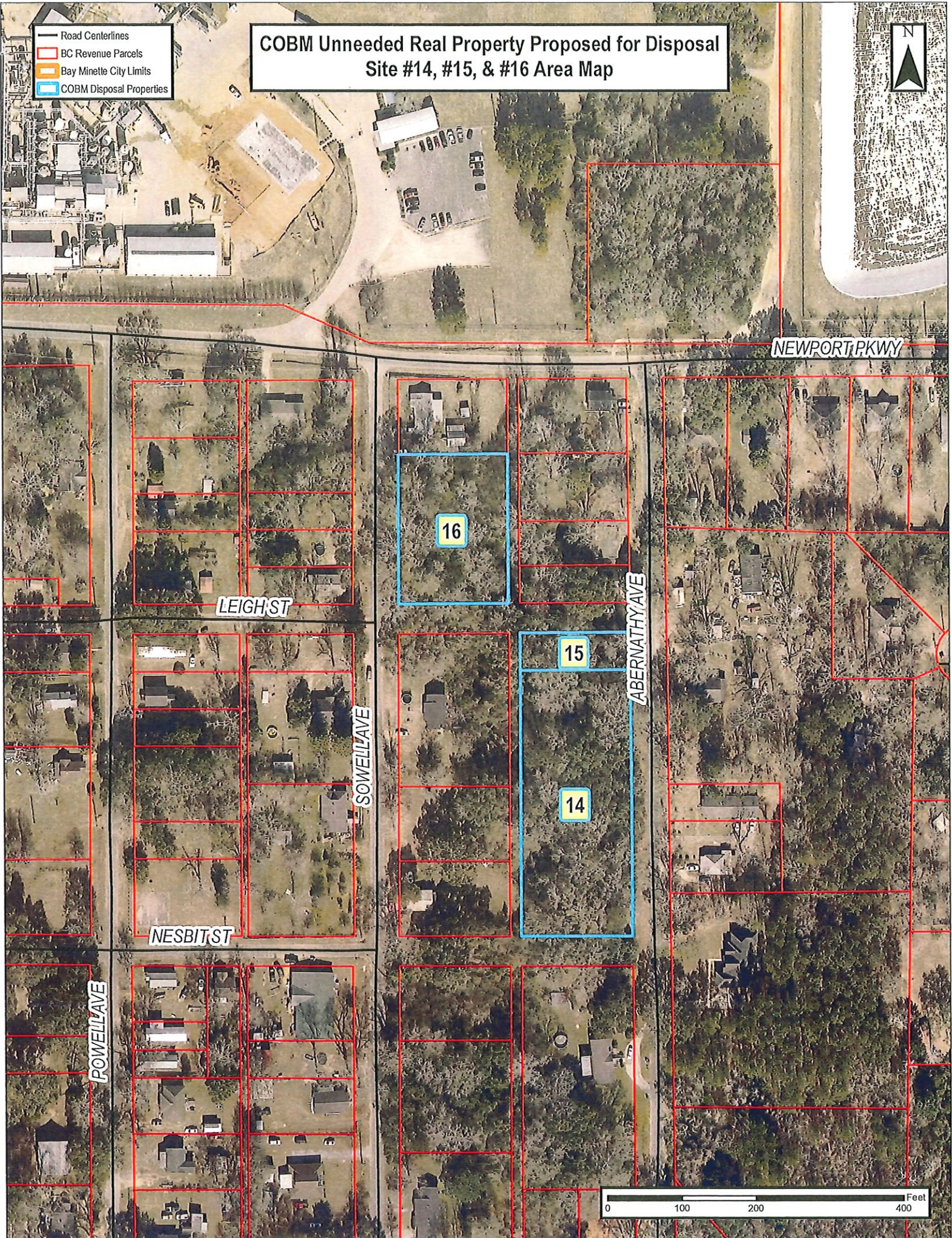
**COBM Unneeded Real Property Proposed for Disposal**  
**Site #14 - PIN 35787 & Site #15 - PIN 35786**





- Road Centerlines
- BC Revenue Parcels
- Bay Minette City Limits
- COBM Disposal Properties

# COBM Unneeded Real Property Proposed for Disposal Site #14, #15, & #16 Area Map





- Road Centerlines
- BC Revenue Parcels
- Bay Minette City Limits
- COBM Disposal Properties

COBM Unneeded Real Property Proposed for Disposal  
Site #16 - PIN 35785



NEWPORT PKWY

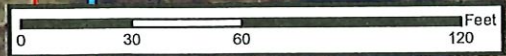
SOWELL AVE

LEIGH ST

16

15

14





- Road Centerlines
- BC Revenue Parcels
- Bay Minette City Limits
- COBM Disposal Properties

COBM Unneeded Real Property Proposed for Disposal  
Site #17 - PIN 23802

